



[To view ATL online click here](#)

A note from the Director

Welcome to 2020! It sounds like the setting for a science fiction movie not today's date. Though we live in a world with drones planting trees, tree ID with a smartphone, digital maps of everything, voice activated GPS directions, and more, the forest is still a place to connect with what's true in the world. It's reassuring to be with the hemlocks, maples, oaks, and birches rooted firmly in reality.



The Guild's solid foundation in what's real —the real challenges of meeting human and ecological needs in the woods — has brought dedicated, creative people together for 25 years and I'm thrilled with the growing staff who've been drawn by our mission to work for the Guild. The Guild's mission continues to resonate with the next generation of forest stewards. For example, we have 20 new student members from Allegheny College this month!

The power of the Guild's focus on what's real also explains the success of our annual appeal. Thank you so much for exceeding our goals as we enter our 25th year! This year we'll be putting our mission into action across the country as exemplified by this month's articles on [bottomland hardwoods](#), [the changing forests of New England](#), and [all sort of events](#)!

Thank you for celebrating the real world with us!

A handwritten signature in black ink that reads "Zander".

NEWS FROM THE FOREST

Guild staff look forward to the year ahead

Written by Amanda Mahaffey and Colleen Robinson.

In December, Guild staff convened from all corners of the country for a two-day retreat designed to build staff cohesion and create the space for important, team-building conversations needed to set us up for success in 2020 and beyond. From Maine and New Mexico, North Carolina and Oregon, Wisconsin and Minnesota, we descended on the Loveland office to all meet face-to-face for the first time.



We began with the Guild tradition of an introduction circle. We shared our stories of how we each connected with the Guild. It was clear that the “spark” that inspires our members also inspired our staff to join the Guild team.

[Read More](#)

Forest Climate Adaptation Needs Assessment

Written by Amanda Mahaffey

As we grow our knowledge about climate change impacts, forest stewards increasingly seek resources for adapting forests to these changes. The Forest Stewards Guild (FSG) and the Northern Institute of Applied Climate Science (NIACS) listened to forest managers across New England to assess the current information and tools needed to ensure our forests' resiliency. This effort was led by Guild members Maria Janowiak (NIACS), Amanda Mahaffey (FSG), and Christopher Riely (Sweet Birch Consulting, LLC). Results of the work are published in a new report, *Moving the Needle: A Review of Needs to Increase Climate Adaptation in the Forests of New England*.

[Read More](#)



Guild expands support for wildlife forestry in bottomlands

Written by Dakota Wagner and Zander Evans.

Bottomland and coastal wetland forests are a dominant feature in the US South, accounting for nearly 35 million acres—only half of their historic coverage. On top of that, one third of currently listed endangered species are dependent on wetlands, making the conservation of these forests a national priority. Most remaining bottomland hardwood forests are privately owned, making private forest landowners key stakeholders for enhancing or restoring bottomland forests across the South.



Two of our projects focus on enhancing natural stands of bottomland hardwood forests in the Lower Mississippi Alluvial Valley (LMAV) and Coastal Carolinas for the benefit of wildlife species and freshwater systems.

[Read More](#)

Celebrating the Guild's 25 years...

Happy birthday to the Guild! This year we celebrate 25 years of challenges and successes, community building and ecosystem re-building, awareness and innovative shifts in perspective. Our work, in the Guild offices and among our members and partners in the field, is not easy. It is fulfilling and it makes a difference on an ever-increasing scale. As we celebrate, we are also taking a sober look at what it takes to maintain and develop solutions and on-the-ground action to put the forests first. Soon, we will be asking for your help. This year, we have birthday dreams of featuring the stories that need to be told, growing our membership, and funding our efforts toward our collective vision. There will be so many ways for you to help and to celebrate with us. Please stay tuned and stay engaged. YOU are why we celebrate today and all year.



Remember to offer up reflections, photos, and other celebrations you may have to share on our [anniversary webpage](#)! Email colleen@forestguild.org.

MPC Update

The 2020 MPC is already working to prioritize and implement their work in this 25th anniversary year. Check out the January 2020 MPC Update, and please let your MPC know your thoughts, ideas, concerns, and gratitude.

Upcoming Events

Want Forest Stewards Guild members to know about an event? Have a 2019 Guild Gathering site or project idea? Let us know! Email colleen@forestguild.org.

January 22	Webinar (noon MT)	Strategic Wildfire Risk Planning: applications, lessons learned, and future directions
January 25	Leicester, NC	3rd Sandy Mush Forest Restoration Coalition Meeting and 1st Restoration Gathering
January 27	Webinar (1pm PT)	Strategies for increasing prescribed fire application on federal lands
January 28	Webinar (11a MT)	FSC Mitigation: Dead Wood and Forest Management
Jan 29-30	Cloquet, MN	Fire in Minnesota Ecosystems Workshop
February 5	Webinar (3pm CT)	USFS – Federal Planning and Capacity Building for Carbon
February 7	Webinar (11a ET)	Webinar - Lyme Disease Ecology
February 12	Orono, ME	Science and Practice Forum
February 13	Vernon, CT	Oak Resiliency in Southern New England
Feb 26 - 27	Corvallis, OR	Forest Health in Oregon: State of the State 2020 Conference
March 2 - 4	Albuquerque, NM	Collaborative Forest Landscape Restoration Workshop
March 3	Webinar (series)	Forest Adaptation Webinar Series - #3: Climate Refugia
March 10	Webinar (2-4p MT)	Save the date: Incorporating bird needs into piñon-juniper woodland management
March 21 - Apr 3	Johnstown, NV	TREX, Nevada

Welcome New Members

Professional members

Neil Gifford, Albany Pine Bush Preserve Commission	Albany, NY
John Scanlon, MassWildlife	Barre, MA

Affiliate members

Dave Bubser, SCS Global Services	Northfield, MN
Terry and Brenda Owens	Gruetli Laager, TN

Student members

Rachael Ankney, Allegheny College	Meadville, PA
Mitchell Carrigan, Allegheny College	Meadville, PA
Ross Carter, Allegheny College	Columbus, OH
Alton Caylor, Allegheny College	New Castle, PA
Tianna Clay, Allegheny College	Meadville, PA
Jakob Drozd, Allegheny College	Vienna, VA
Francis Faiello, Allegheny College	Pittsburgh, PA
Sara Galley, Allegheny College	Pittsburgh, PA
Taylor Gates, Allegheny College	Pleasantville, PA
Samantha Hall, Allegheny College	Meadville, PA
Delaney Harrison-Peters, Allegheny College	Meadville, PA
Grace Hemmelgarn, Allegheny College	Williston, VT
Luke Kellett	Pasadena, MD
Bailey Kozalla, Allegheny College	Saegertown, PA
Megan Kresse, Allegheny College	Arlington, VA
Maggie Malley, Allegheny College	Meadville, PA
Ally Martin, Allegheny College	Olcott, NY
Isabella Petitta, Allegheny College	Cranberry Twp, PA
Ben Slack-Foust, Allegheny College	Saltsburg, PA
Steve Spotts, Allegheny College	Cranberry Twp, PA
Theresa Winter, College of Lake County	Lake Villa, IL

Stewards Circle Donors

Thank you to all of our [Stewards Circle donors](#) for supporting the Guild's work!

Mark Ashton	Union, CT
Baldwin, Blomstrom, Wilkinson, and Assoc, Inc	Arcata, CA
Bill Bradley	New York, NY
Carl Siemon Family Charitable Trust	Milton Mills, NH
Peter Evans	Albuquerque, NM
Fox Foundation	Princeton, NJ
Jameson French	Kingston, NH
Dylan Jenkins	Williamsport, PA
Louise Lamphere	Albuquerque, NM
Robert Perschel	Hudson, MA
SB Foundation	Lamy, NM
Jeffrey Smith	Thetford Center, VT

Organizational Sponsors

Thank you to our [organizational sponsors](#)! Your support is essential to fulfilling our mission of putting the forest first.



How to help

Watch for special opportunities to support the Guild and all our members throughout 2020! As always, you can always help in these ways: become an [organizational sponsor](#) or join our [Stewards Circle](#) today! In fact, a [donation](#) at any level directly supports our forests and the fulfillment of our December giving goals. We also welcome professional and affiliate [members](#) who advance the stewardship of forests across the landscape.

You can also support the Forest Stewards Guild by shopping on [Amazon Smile](#) for any holiday gifts you cannot buy locally. And, share our [GuideStar Profile](#) with anyone looking for an upstanding charity.

Notes

Thank you to all who have renewed membership with the Guild. If you haven't gotten to it yet, please renew today by mail or [online](#). If you need assistance, we are happy to help. Just email membership@forestguild.org.

Forester Bob Kangas has retired and is [honored](#) by the Guild's own Mark Jacobs for his work.

The Guild signed onto this Rural Voices for Conservation Coalition [Comment Letter on the Alaska Roadless Rule](#) in December of 2019.

Have notes you'd like to share with fellow Guild members? Contact Colleen Robinson, membership@forestguild.org.

Publications and Research

Support for regulatory and voluntary approaches to wildfire adaptation among unincorporated wildland-urban interface communities. Communities considered regulatory approaches only if associated standards or policies were specifically tailored to their community, channeled through a trusted organizing body, and organized by community leaders.

National assessment of BMPs. "According to the latest NASF report on forestry BMPs and their use nationwide, loggers and other forest practitioners use BMPs when and where they are needed 92 percent of the time."

A **new monitoring report** from The Colorado Forest Restoration Institute indicates that 80% of projects were predicted to support passive or active crown fire under severe conditions before treatments, and this was reduced to 36% following treatments.

Climate change unlikely to drive sugar maples north, according to *Soil abiotic and biotic properties constrain the establishment of a dominant temperate tree into boreal forests*, in the Journal of Ecology, 2020. "While global warming might have made it physiologically possible for sugar maple trees to grow in more northern areas, the soil conditions in these areas make a northern migration less likely."

Jobs

Be sure to check out the [job opportunities](#) in forest stewardship on the Forest Stewards Guild webpage! These include [graduate research assistantships](#) with MI-CARES, a [State Lands Silviculture Scientist](#) with WA DNR, a [District Forester](#) in NM, a [Squad Supervisor](#) in Denver, an [Extension Educator](#) in WI, an [Associate or Assistant Professor](#) at Yale, a [Manager of Forestry & Natural Resource Extension Fire Program](#) in OR, a [Strategic Communications Director](#) in CT, a [Forestry Office/Accounting Manager](#) in NH with Meadowsend Timberlands Ltd, a [Land Stewardship Coordinator](#) with the Aldo Leopold Foundation, and many more!

Forest Stewards Guild - <http://foreststewardsguild.org> - 505-983-8992 - membership@forestguild.org

This email was sent to zander@forestguild.org. If you are having trouble viewing this email, you may [also view it online](#). To opt out of all communications, [click here](#).

[Forward email](#).





[To view ATL online click here](#)

A note from the Deputy Director

February has brought unusual winter weather to much of the country. Across the landscape, Forest Stewards Guild members and partners are adapting forests to the changing climate and sharing forest wisdom to increase ecosystem resiliency. We are [supporting rural voices](#) in forest-dependent communities through the Rural Voices for Conservation Coalition.

The Guild is also investing in the next generation of forestry and fire professionals. We sponsor a forestry internship through the U.S. Fish and Wildlife Service. [Read our 2019 intern's story](#) and be inspired! We are also growing an "ecosystem" of [fire practitioners](#) through youth corps programs that launch future forest stewards down a fulfilling career path.

Our Membership and Policy Council's working groups are busy addressing topics ranging from student engagement to plantation forestry. None of these activities would be possible without your support. Many thanks to those who sustain your membership in the Forest Stewards Guild! You are, as [Barrie Brusila writes](#) in her 25th anniversary reflection essay, our roots.



A handwritten signature in blue ink that reads 'Amanda'.

Remember the options to [auto-renew](#), or set up [monthly giving](#), which help the Guild plan for the future and redirect critical time and resources from administrative tasks to supporting our forests directly.

NEWS FROM THE FOREST

Interning with the Guild

Written by Casandra Downs.

I never realized how blessed I was to be born in a small valley town beneath the Rocky Mountains of Utah, until I saw how it shaped my adult life. Joining the Forest Stewards Guild's team as a forestry and wildlife intern, I was given the unique experience of working at two National Wildlife Refuges (NWR) in both Georgia and South Carolina for a total of six months. It gave me the experience of working in two different environments, I got to be introduced to two different skill sets, two different ways to run the

same organization, and two groups of amazing people.

[Read More](#)

The Guild Builds New Wildfire Career Pipeline

Written by Meg Matonis

The drip torches are lit, and the Forest Stewards Guild is blazing the path toward a more progressive fire management community. The U.S. Air Force awarded the Guild a contract with multi-year potential to place wildland fire operations technicians at three installations across the country. The Guild's partnership with AFWFB furthers our vision of an inclusive fire program that provides training and employment opportunities and boosts prescribed fire capacity. According to Jennifer Mueller, Guild Training Specialist, "We are building an ecosystem of fire practitioners. We introduce young adults to wildland fire through hands-on training and offer them gainful employment in a supportive environment."

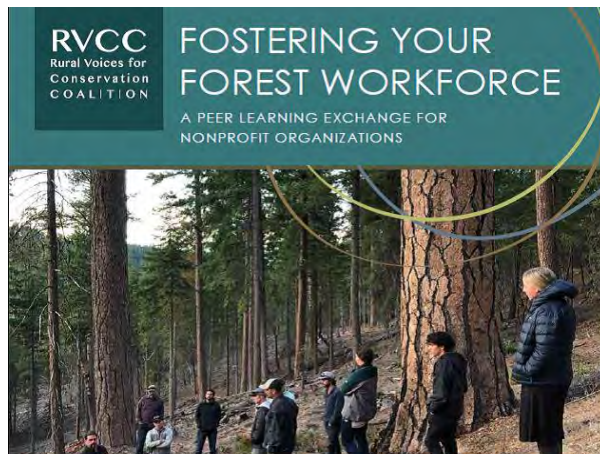


[Read More](#)

Guild's work with RVCC

Written by Zander Evans.

A central part of the Guild's mission is to promote ecologically, economically, and socially responsible land stewardship. Policy at the federal, state, or local level is often the most effective tool. In the world of policy, the Rural Voices for Conservation Coalition (RVCC) is essential for the Guild to stay on top of important issues and make our voice heard. RVCC is committed to finding and promoting solutions through collaborative, place-based work that recognizes the inextricable link between the long-term health of the land and the well-being of rural communities. Their mission is well aligned with the Guild's.



[Read More](#)

Celebrating the Guild's 25 years...

Check out [this month's 25th anniversary reflections](#) from Barrie Brusila.

Remember to offer up reflections, photos, and other celebrations you may have to share on our [anniversary webpage](#)! Email colleen@forestguild.org.

Upcoming Events

Want Forest Stewards Guild members to know about an event? Have a 2019 Guild Gathering site or project idea? Let us know! Email colleen@forestguild.org.

February 25	Webinar	Boundary-Spanning for Collective Action: Managing Wildfire Risk in the West
Feb 26 - 27	Corvallis, OR	Forest Health in Oregon: State of the State 2020 Conference
March 2 - 4	Albuquerque, NM	Collaborative Forest Landscape Restoration Workshop
March 3	Webinar (series)	Forest Adaptation Webinar Series - #3: Climate Refugia
March 10	Webinar (2-4p MT)	Incorporating bird needs into piñon-juniper woodland management
March 18	Webinar (12p MT)	Foresters for the Birds - a national view
March 21 - Apr 3	Johnstown, NV	TREX, Nevada
March 26	Webinar (11a MT)	Conversion from Forest to Non-Forest
March 28 (Apr 4)	Cedar Mtn, NC	DuPont State Recreational Forest Learn and Burn
April 3	Proposals due	National Tribal & Indigenous Climate Conference runs Aug 31 to Sept 4
April 25 - 26	Lyman, ME	Women's Chainsaw Safety Course
May 16	Centerville, PA	Loving the Land Through Working Forests Conference
May 30	Morgantown, WV	Save the date! Workshop focused on ecological management in central Appalachians hardwood coves.
Late August	Asheville, NC	25th Anniversary Guild Gathering! More soon on <i>celebrating the roots of Guild forestry</i> .
October	Corvallis, OR	25th Anniversary Guild Gathering! More details soon.

Welcome New Members

Professional members

John Gifford, FORECON, Inc.	Falconer, NY
John Irwin	Lyndonville, VT
Andrew Morrison, Forest*Care	Dummerston, VT
Samantha Schinnell, Ecological Fire Solutions, LLC	Ridgefield, WA

Affiliate members

Jon Leibowitz	Montpelier, VT
---------------	----------------

Benjamin Rifkin

Charlottesville, VA

Student members

Jeremy Cruz, University of Alabama	Temple, TX
Joseph House, Hocking College	Nelsonville, OH
Molly Jennings, Central Washington University	Ellensburg, WA
Kenna Jordan, University of Alabama	Winthrop Harbor, IL
Bridget Levy, Oregon State University	Seal Rock, OR
Jillian Martel, University of Connecticut	Bristol, CT
Henry Pitts, University of Alabama	Tuscaloosa, AL
Megan Rondinelli, University of Alabama	Frisco, TX
Hannah Stumpfl, University of Alabama	Springboro, OH

Stewards Circle Donors

Thank you to all of our [Stewards Circle donors](#) for supporting the Guild's work!

Ross Morgan

Craftsbury Common, VT

Organizational Sponsors

Thank you to our [organizational sponsors](#)! Your support is essential to fulfilling our mission of putting the forest first.





How to help

Please help us reach our 25th Anniversary Challenges! Set up [auto-renew](#) when you renew your membership (goal: 25% of memberships on auto-renew), or set up [monthly giving](#) when you donate (\$25 monthly recurring donations put you in the Stewards Circle level, but no amount is too small). These tools help the Guild redirect time and resources from administrative tasks to work we all want to see done on the ground. As always, you can also help in these ways: become an [organizational sponsor](#) or join our [Stewards Circle](#) today! In fact, a [donation](#) at any level directly supports our forests. We also welcome professional and affiliate [members](#) who advance the stewardship of forests across the landscape.

You can also support the Forest Stewards Guild by shopping on [Amazon Smile](#) for any holiday gifts you cannot buy locally. And, share our [GuideStar Profile](#) with anyone looking for an upstanding charity.

Notes

Congratulations to Guild member Kathryn Fernholz, just named the first woman to serve in the Chair position on AFF's Board! Also, Fred Clark is the new vice chair of AFF's Woodland Operating Committee and Jamey French is vice-chair! All Guild members and this is all great news!

Amy Grotta, Guild member and overall advocate for the Earth, has died. [Read her husband's letter to the Guild](#), and her [obituary](#), which offers ways to share your memories and condolences.

Guild member Bob Williams shares Maya Lin's Ghost Forest Opening June 2020. For Madison Square Park Conservancy's 40th public art commission, Maya Lin will realize a new, site-responsive installation that brings into focus the ravages of climate change on woodlands around the world.

Have notes you'd like to share with fellow Guild members? Contact Colleen Robinson, membership@forestguild.org.

Publications and Research

Reducing Fire, and Cutting Carbon Emissions, the Aboriginal Way. This interesting article in The New York Times describes preventative burning practices of aboriginal people in Australia. This message about fire will reach a lot of people and creates a more nuanced discussion about how the timing and severity of fire influences its effect on humans and ecosystems.

The Guild's own Matt Piccarello attended and presented on FSYC at this Peer Learning Exchange last fall hosted by the Rural Voices for Conservation Coalition. *Fostering Your Forest Workforce* is a summary of the learning exchange.

Check out this [case study: Working Together to Increase the Pace and Scale of Prescribed Fire](#). The Guild's Zander Evans and Matt Piccarello are two of the authors.

The Intersection between Climate Adaptation, Mitigation, and Natural Resources: An Empirical Analysis of Forest Management. Climate relationships with increasing wildfire in the southwestern US from 1984 to 2015. Increasingly warm and dry climate has a strong relationship to increasing wildfires, particularly high severity fires.

The Effects of Previous Wildfires on Subsequent Wildfire Behavior and Post-Wildfire Recovery. Northern Rockies Fire Science Network Science Review No. 1, September 2014. Updated 2019 (update linked above).

Jobs

Be sure to check out the [job opportunities](#) in forest stewardship on the Forest Stewards Guild webpage! These include a [summer internship with the Guild](#) in SC, [two prescribed fire jobs with the Guild](#) in CO, a [graduate research assistantship](#) at Mississippi State University, an [Assistant Professor of Practice - Extension Forester](#) at Oregon State University, [three forest research science jobs](#) at Wisconsin DNR, a [Forest Management Specialist](#) with TNC in VA, a [Fire Communications Specialist](#) with NAFSE, a [seasonal Prescribed Burn Crew Member](#) in WI, and many more!

Forest Stewards Guild - <http://foreststewardsguild.org> - 505-983-8992 - membership@forestguild.org

This email was sent to colleen@forestguild.org. If you are having trouble viewing this email, you may [also view it online](#). To opt out of all communications, [click here](#).

[Forward email](#).





[To view ATL online click here](#)

A note from the Director

The Forest Stewards Guild has always acknowledged the intricate connections – ecological connections that link all species in the forest and economic connections that link forest products and ecological forestry. The Covid-19 pandemic underscores how we are all connected. We are concerned about all who face this disease, particularly the most vulnerable and those working on the front lines to care for others. Covid-19 will have long-lasting impacts both directly and indirectly as the economic impacts continue to reverberate. As the Director-General of the World Health Organization said "The days, weeks, and months ahead will be a test of our resolve, a test of our trust in science, and a test of solidarity."



We are [doing what we can to reduce spread](#). At the same time, there is so much to do for forests and communities, we are diving into projects that don't require working face-to-face.

I hope it is a welcome change of topics to delve into this issue of *Across the Landscape* highlighting stores of [exceptional Guild women in forestry](#), [the Guild's collaboration on fire science](#), and [mitigating the impacts of smoke from fires](#). There are [new publications](#) to read and [changes to up-coming events](#).

In these stressful times I'm thankful to be part of the Guild community that fosters resilience and connections.

A handwritten signature in black ink that reads "Zander".

NEWS FROM THE FOREST

Collaboration to advance fire science and practice

Written by Zander Evans.

The Forest Stewards Guild has worked with the Joint Fire Science Program (JFSP) for more than a decade and our collaboration has grown from one research project to a nation-wide engagement on outreach, education, research, and policy. The federal agencies involved with wildfire response and fire management created JFSP to solve the pressing fire research questions land managers asked. JFSP has taken seriously the need to engage scientists and managers in two-way dialog. This two-way connection between science and management mirrors the Guild's approach to science-based stewardship.

[Read More](#)



HEPA Air Cleaner Loan Program – Helping communities be more prepared for smoke

Written by Sam Berry

Since 2018 the Forest Stewards Guild has been running a HEPA Air Cleaner Loan program in Northern New Mexico to support individuals during smoke impacts from fires. Although at first glance this seems like a program that a public health organization should take on instead of a forestry-oriented one, it fits perfectly into our mission of building Fire Adapted Communities, that guides most of our work in the Southwest. Our long-term goal with this program is to assist communities that live in fire adapted forests to be prepared to deal with smoke from these fires as well.

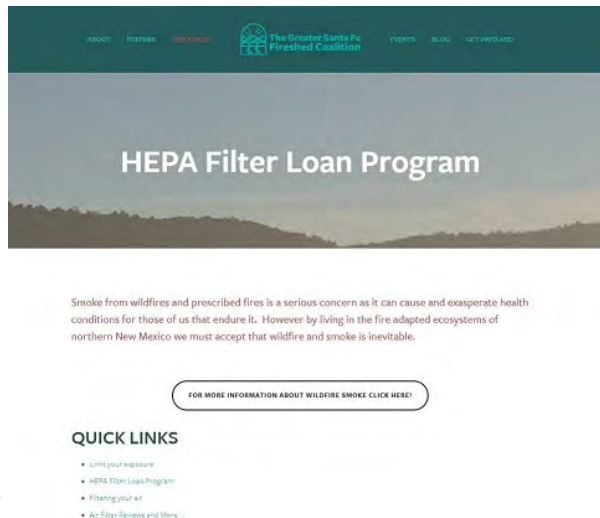
[Read More](#)

Celebrating two Guild women in forestry during Women's History Month

Interviewer: Colleen Robinson.

Two women, Amanda Mahaffey and Barrie Brusila, who have been critical to the success of the Forest Stewards Guild, will be receiving awards in the near future for their outstanding work in forestry. The New England Society of American Foresters will share their own announcement and we don't want to steal their flame. Instead, as we prepare to celebrate several individuals and their contributions to forestry and forestry programming, this article takes a closer look at how, not surprisingly, these women are both Guild members and have shared values that prove essential for our world.

[Read More](#)



Celebrating the Guild's 25 years...

We've announced the dates and location for our first 25th Anniversary Guild Gathering! [Check out the details](#) so far on our events webpage. We're so excited to see you later this year!

This month's Founder's Essay is by Robert Perschel. Enjoy! Remember to offer up your own reflections, photos, and other celebrations to share on our [anniversary webpage](#)! Email colleen@forestguild.org.

Upcoming Events

Want Forest Stewards Guild members to know about an event? Have a 2019 Guild Gathering site or project idea? Let us know! Email colleen@forestguild.org.

March 26	Webinar (11a MT)	Conversion from Forest to Non-Forest

Postponed	Cedar Mtn, NC	DuPont State Recreational Forest Learn and Burn
April 3	Proposals due	National Tribal & Indigenous Climate Conference runs Aug 31 to Sept 4
Postponed	Lyman, ME	Women's Chainsaw Safety Course
May 16	Centerville, PA	Loving the Land Through Working Forests Conference
Postponed	Morgantown, WV	Workshop focused on ecological management in central Appalachians hardwood coves.
August 20 - 22	Asheville, NC	25th Anniversary Guild Gathering! Celebrating the roots of Guild forestry.
October 8 - 9	Corvallis, OR	Save the date! 25th Anniversary Guild Gathering! More details soon.

Welcome New Members

Professional members

Liz Thompson, Vermont Land Trust	Richmond, VT
----------------------------------	--------------

Student members

Jacob Craver, Paul Smith's College	Lisle, NY
Gregory Davis, Paul Smith's College	Gloucester, MA
Mackenzie Merbach, Stephen F. Austin State University	Nacogdoches, TX
Emily Nelson, Paul Smith's College	Paul Smiths, NY
Matthew Wedge, Paul Smith's College	Verona, NY

Stewards Circle Donors

Thank you to all of our [Stewards Circle donors](#) for supporting the Guild's work!

Organizational Sponsors

Thank you to our [organizational sponsors](#)! Your support is essential to fulfilling our mission of putting the forest first.





How to help

Please help us reach our 25th Anniversary Challenges! Set up [auto-renew](#) when you renew your membership (goal: 25% of memberships on auto-renew), or set up [monthly giving](#) when you donate (\$25 monthly recurring donations put you in the Stewards Circle level, but no amount is too small). These tools help the Guild redirect time and resources from administrative tasks to work we all want to see done on the ground. As always, you can also help in these ways: become an [organizational sponsor](#) or join our [Stewards Circle](#) today! In fact, a [donation](#) at any level directly supports our forests. We also welcome professional and affiliate [members](#) who advance the stewardship of forests across the landscape.

You can also support the Forest Stewards Guild by shopping on [Amazon Smile](#) for any holiday gifts you cannot buy locally. And, share our [GuideStar Profile](#) with anyone looking for an upstanding charity.

Notes

How The World Of Building Materials Is Responding To Climate Change. Our friends at New England Forest Foundation and others were featured on Science Friday discussing carbon sequestration and future uses for forest products.

Longtime Guild member Darcie Mahoney, receives lifetime achievement award!

The New Mexico Out of School Time network is posting resources for meals, childcare and activities. You may find it useful, please pass on to your communities as well.

**Have notes you'd like to share with fellow Guild members? Contact Colleen Robinson, membership@forestguild.org.
Publications and Research**

Social Vulnerability and Wildfire in the Wildland-Urban Interface.

Forest Management for Carbon Sequestration and Climate Adaptation. A number of Guild members are authors on this article, which cites past Guild research and highlights the Foresters for the Birds program.

Monitoring Update: Restoration Objectives in the Zuni Mountains CFLR Landscape. This update synthesizes Chris Guiterman's analysis of forest overstory data from permanent plots in the Zuni Mountain CFLR Landscape.

Federally protected lands reduce habitat loss and protect endangered species. Significantly greater habitat loss occurs on private lands, indicating a need for more uniform conservation efforts.

Insights and Suggestions for Certified Prescribed Burn Manager Programs. The Guild's Intermountain West Manager, Meg Matonis, published a new report that delves into how certified prescribed burn manager programs can provide training and expertise to private landowners, contractors, non-profit employees, and others who are using prescribed fire to reduce hazardous fuels and restore ecological health.

Jobs

Wow - something for almost everyone this month! Be sure to check out the [job opportunities](#) in forest stewardship on the Forest Stewards Guild webpage. They include [Forest Stewards Youth Corps Crew Member and Crew Leader positions](#) in NM, several positions from [Limited Term](#) to [Career Executive](#) levels at the Wisconsin Department of Natural Resources, a [seasonal Crew Leader](#) in VT, a [Forester](#) for the state of Utah, an [Executive Director](#) of Maine TREE Foundation, a [Postdoc and a PhD RA](#) for wildfires and WUI at the University of Wisconsin Silvics Lab, a [Tribal Forest and Fire Project Manager](#) in CA, two Assistant Fire Manager positions with the Washington Dept of Natural Resources in [Dayton](#) and [Husum](#), a [Master's of Science Assistantship](#) at the University of Georgia, and MORE!

Forest Stewards Guild - <http://foreststewardsguild.org> - 505-983-8992 - membership@forestguild.org

This email was sent to zander@forestguild.org. If you are having trouble viewing this email, you may [also view it online](#). To opt out of all communications, [click here](#). Email Marketing By

[Forward email](#).





[To view ATL online click here](#)

A note from the Director

The health impacts, uncertainty, and economic turmoil from Covid-19 are changing everything. Though I choose to focus on the hopeful signs of the positive effect of social distancing, vaccine development, and creative community support, there is no getting around that this pandemic is changing lives and work.

It's no surprise that the articles in this issue tackle the impacts of the pandemic. Read how the [Guild is finding ways to help us all stay connected and hopeful](#). For those of us living in fire-adapted ecosystems the start of [fire season brings increased responsibilities to preparing our homes and families for wildfire and preventing human-caused ignitions](#). Just like most organizations, the pandemic has forced some changes to the Guild's work to support the FSC controlled wood standard.



Wishing you good health, bright spirits, and strength.

A handwritten signature in black ink that reads 'Zander'.

*Photo by Greg Iffrig.

NEWS FROM THE FOREST

Connecting our community

Written by Colleen Robinson.

No matter how you are weathering the current world-wide storm, we all can benefit from community now. The Guild is a powerhouse when it comes to like-minded forestry and allied professionals providing a strong, supportive community that can pull together and support each other. We are working hard to find ways to help us all stay connected and hopeful. But something even bigger exists here, and we see it in the Guild history we celebrate now in our organization's 25th birthday year. From these like-minds and yet varied perspectives, we can create something new. Solutions, support, or perhaps even a meaningful shift of the status quo.



[Read More](#)

Fire response during the Covid-19 Pandemic

Written by Sam Berry.

First responders from every jurisdiction are making plans for how to fight wildfires while keeping firefighters safe and healthy this year during the Covid-19 pandemic. While there are changes in store for all agencies, the local firefighters at volunteer, city, and county fire departments, that we rely on for most fire suppression near homes, may be the most impacted. Most importantly, while our first responders do everything they can to suppress wildfires, it's even more important than normal for all of us to do what we can to set them up for success. We can assist firefighters by preparing our homes and our families for wildfire and preventing human-caused ignitions. On the Guild's new Wildfire Resilience and Covid-19 webpage, we list several news articles and resources about how firefighters and agencies are preparing.



[Read More](#)

Continued work to support FSC controlled wood standard

Written by Zander Evans.

The Guild is working with FSC certified companies from across the country to share information about the importance of old growth forests, biodiversity in the Klamath-Siskiyou Region, bottomland hardwood forests, mixed mesophytic forests of the Appalachians, and the threat posed by conversion of forest to other uses. We have recently expanded our education and outreach efforts, including hosting an array of webinars on these topics. Resources are collected on our website's pages for these topics. We've produced handouts for the FSC companies as well. As companies share these with clients, procurement foresters, and landowners, they'll be sharing our vision for ecological forestry.



[Read More](#)

MPC Update

Like most of us, your Membership and Policy Council representatives are busy re-directing, or finding new ways to accomplish the same goals. They definitely have your interests and well-being in mind and wish you all the best. [Read the April 2020 MPC Update.](#)

Celebrating the Guild's 25 years...

[Registration is open for our 25th Anniversary Guild Gathering](#) in August! We're excited and hopeful to see you later this year!

And, before the next e-newsletter arrives in your inbox, our celebratory spring issue of the Forest Steward magazine will be mailed to members. Happy birthday, Guild!

Some new photos are available on our [anniversary webpage](#)! Remember to offer up your own reflections, photos, and other celebrations to share. Email colleen@forestguild.org.

Upcoming Events

Want Forest Stewards Guild members to know about an event? Have a 2019 Guild Gathering site or project idea? Let us know! Email colleen@forestguild.org.

April 15 - Aug	Online course	Northeast Silviculture Institute for foresters available online
April 20-June 12	Online course	Adaptation and Practices online course
April 21	Webinar	Virtual Guild Gathering - share stories and ideas of adaptation and resilience
April 22	Webinar	Communicating with Landowners about Oak Forest Resiliency
Apr 25 & May 2	Webinar	Women's Chainsaw Safety Fundamentals two-part, interactive webinar
April 28	Webinar	Unlocking Carbon Markets for Family Forest Owners in the PNW
April 29	Webinar	Southwest Fire Season 2019 Overview and 2020 Outlook
May 6 and June 3	Webinars	Forest Climate Working Group Learning Exchange Series
May 7	Webinar	SCGIS: Lessons learned from the front lines of climate change
May 15	Belchertown, MA	Foresters for the Birds training
May 21	Webinar	Forest Birds. #6 in the Forest Adaptation Webinar Series
June 25	Webinar	Regeneration issues. #7 in the Forest Adaptation Webinar Series
June 27 - 28	Springvale, ME	Women's Chainsaw Safety Course
August 20 - 22	Asheville, NC	Celebrating the roots of Guild forestry - 25th anniversary celebration!
October 26 - 27	Rangeley, ME	Symposium on Climate Change in Maine's Mountains
Postponed	TBD	Mountain Cover Forest Management and Conservation in the Central Appalachians
Coming...TBD	Webinar	Wildlife Forestry in Bottomland Hardwood Forests
Coming...TBD	Webinar	Ecological Forestry in Mountain Cove Forests of the Appalachian Region
Rescheduled...TBD	Corvallis, OR	Save the date! 25th Anniversary Guild Gathering! More details soon.

Welcome New Members

Professional members

Tommie Herbert, The Forestland Group	Durham, NC
--------------------------------------	------------

Student members

Marlon Andrew, College of the Atlantic	New Canaan, CT
Lily Bennett, College of the Atlantic	Bar Harbor, ME
Rebecca Bland, Yale University	New Haven, CT
Makayla Corrigan, College of the Atlantic	Narragansett, RI
Kiernan Crough, College of the Atlantic	Bar Harbor, ME
Hannah Darrin, Yale University	Hague, NY
Devon Ericksen, Yale University	Ashland, VA
Seth Inman, Yale University	New Haven, CT
Cynder Johnson, College of the Atlantic	Bar Harbor, ME
Kristen Jovanelly, Yale University	New Haven, CT
Reid Lewis, Yale University	New Haven, CT
Isidora Liliana Muñoz Segovia	Bar Harbor, ME
Eliot Nagele, Yale University	Lawrenceville, NJ
Hugo Navarro, College of the Atlantic	Bar Harbor, ME
Danielle Parker, College of the Atlantic	Monmouth, ME
Alexander Percy, College of the Atlantic	Bar Harbor, ME
James Puerini, Yale University	New Haven, CT
Michael Storace, Yale University	Nashua, NH
Daniel Tomlinson, Paul Smith's College	Keuka Park, NY
Judith Tunstad, College of the Atlantic	Bar Harbor, ME
Molly Loomis Tyson, Yale University	New Haven, CT
Matthew Valido, Yale University	New Haven, CT
Abbey Warner, Yale University	Walnut Creek, CA
Allegra Wiprud, Yale University	New Haven, CT

Stewards Circle Donors

Zander Evans, Forest Stewards Guild	Santa Fe, NM
-------------------------------------	--------------

Thank you to all of our [Stewards Circle donors](#) for supporting the Guild's work!

Organizational Sponsors

Thank you to our [organizational sponsors](#)! Your support is essential to fulfilling our mission of putting the forest first.





BASKAHEGAN COMPANY



How to help

Thank you to those who have helped us with our 25th Anniversary Challenges! Set up [auto-renew](#) when you renew your membership (goal: 25% of memberships on auto-renew), or set up [monthly giving](#) when you donate (\$25 monthly recurring donations put you in the Stewards Circle level, but no amount is too small). These tools help save the Guild administrative costs. As always, you can also: become an [organizational sponsor](#) or join our [Stewards Circle](#) today! In fact, a [donation](#) at any level directly supports our forests. We also welcome professional and affiliate [members](#) who advance the stewardship of forests across the landscape. If your membership isn't current, **renew or join today to receive our May birthday issue of the Forest Steward magazine!**

You can also support the Forest Stewards Guild by shopping on [Amazon Smile](#) for any holiday gifts you cannot buy locally. And, share our [GuideStar Profile](#) with anyone looking for an upstanding charity.

Notes

Longtime beloved Guild member Peter Bundy died on April 5, 2020. Peter was a discerning forester and creative author. This most recent book was released at the end of 2019 ([read a review here](#)).

The Guild signed onto letters in support of the Joint Fire Science Program to the Senate and House, 2020

Read our Gulf Corps partner's newsletter. Complete with job opportunities, updates, and other stories.

Have notes you'd like to share with fellow Guild members? Contact Colleen Robinson, membership@forestguild.org.

Publications and Research

Climate Adaptations in the Northeast's Forest Products Supply Chain. This recent report describes specifics of climate impacts and adaptations for three links in the Northeast's forest products supply chain.

Challenges, tactics and integrated management of emerald ash borer in North America.

Forests: Carbon sequestration, biomass energy, or both?

Long-Term Greenhouse Gas Benefits from Salvaging Dead Trees Balance Short-Term Excess Emissions. This is a piece by the New Hampshire Agricultural Research Station, highlighting work by the Guild's own John Gunn.

Carbon sequestration and biodiversity co-benefits of preserving forests in the western United States.

Jobs

Be sure to check out the [job opportunities](#) in forest stewardship on the Forest Stewards Guild webpage. They include an [Associate Director](#) and [Senior Analyst](#) for NewForests in CA and MORE!

Forest Stewards Guild - <http://foreststewardsguild.org> - 505-983-8992 - membership@forestguild.org

This email was sent to colleen@forestguild.org. If you are having trouble viewing this email, you may [also view it online](#). To opt out of all communications, [click here](#).

[Forward email](#).





[To view ATL online click here](#)

A note from the Director

It is a testament to our community's resilience and strength, that even during a pandemic the Guild's membership season has started off with a bang. A big 'thank you' to all the members who have already renewed (if you missed the email you can [renew online](#) or email membership@forestguild.org).

Even during this pandemic there is lot going on for Guild members and for the forest. [Our list of webinars](#) by the Guild and partners is extensive! Too much for any one person to take in live, so we've also created a [new webinar library](#) to catch recordings of webinars you missed. We are disseminating information about [wildfire resilience](#), celebrating our 25th anniversary with the [spring issue of the Forest Steward](#), and creating [stronger connections with student members](#) of the Guild. Read about our [ongoing CWPP work](#), how we are [re-creating collaboration](#), a new book on Ecological Forestry authored by Guild members, job opportunities and much more.



For me, the Guild and our community is a bright star during a difficult time. Thank you for helping us maintain our guiding light.

A handwritten signature in cursive script, appearing to read "Zander".

NEWS FROM THE FOREST

"Half-Earth:" Reflections from graduate student Eric Hagen

"Half-Earth:" A wake up call, and the amount of land that needs to be dedicated to nature in order to save the majority of species on Earth from extinction. But how do we do it? And how do we both inspire and empower people to act effectively? I argue that we do it through nurturing relationships with the natural world, and simultaneously equipping people with the tools of modern conservation science. For my master's work, I partnered with the Vermont Alliance for Half-Earth to create web-based articles. These feature conservation tools and concepts embedded into stories about local people and their relationships to the natural world. I wanted to capture the emotional



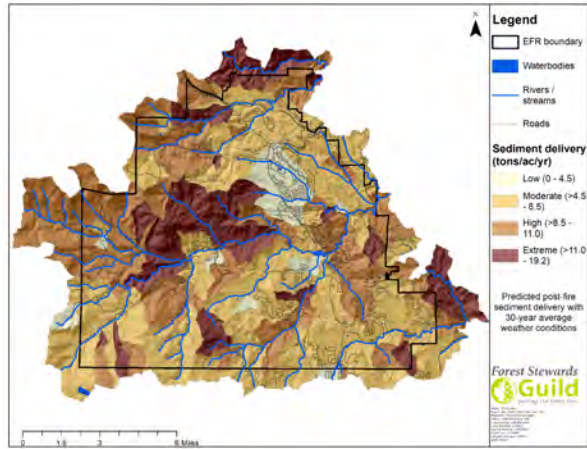
connection to the land that many of us feel but don't always talk about, and tie in concepts like restoration silviculture and large landscape conservation design.

[Read More](#)

Advancing the Practice of CWPPs - Risk Modeling

Written by Corrina Marshall.

The Forest Stewards Guild has worked with many communities in New Mexico and Colorado to produce Community Wildfire Protection Plans, a program that began in 2003, authorized and defined in Title I of the Healthy Forests Restoration Act (HFRA) passed by Congress. For this installment of ATL, we share about our improvements to wildfire risk analysis. This is done by spatial analysis and wildfire behavior modeling based on vegetation data – that part is not new. What we have added to the CWPP process are products like evacuation modeling, post-fire erosion modeling, radiant heat & short- and long-range spotting potential, and treatment suitability analysis. A few examples below show the outputs from these models, a clear indication of where high priority treatments exist.



[Read More](#)

Re-creating Collaboration

Written by Leonora Pepper and Zander Evans.

The pandemic is forcing many of us to rethink how we work, particularly around collaboration. The Guild is meeting the challenge, at a time when collaboration is essential on all fronts. We have increased online learning opportunities, such as our webinar on Communicating with Landowners about Oak Resiliency. We're sharing resources from partners such as [Sustainable Northwest's Resources and Best Practices for Adjusting to Remote Collaboration](#). The Guild's Sam Berry and Gabe Kohler interviewed Jon Boe to get a more in-depth view over how Covid-19 will affect the fire season and Mike Lynch helped lead a [webinar that looked at the 2019 Fire Season and the outlook for 2020 in the Southwest](#), which includes a discussion of fire management in the time of Covid-19.



[Read More](#)

Celebrating our first 25 years...

Check out our most recent [Founder's Essay](#) by Robert Hrubes on our [25th anniversary webpage](#). Remember to email membership@forestguild.org to submit thoughts, quotes, photos, and more to feature on this page and celebrate this milestone of our community and organization.

Upcoming Events

Want Forest Stewards Guild members to know about an event? Have a 2019 Guild Gathering site, webinar, or project idea? Let us know! Email colleen@forestguild.org. Also, check out our **new webinar library** of recorded webinars you may have missed!

Now thru Aug 1	Online Materials	Northeast Silviculture Institute for Foresters available online – 40% off for Guild members!
May 15	Webinar	Maine Mountain Collaborative: Confronting Changing Winters in the Northeast
Postponed	TBD	Foresters for the Birds training
May 18	Webinar	Wildlife Habitat Management at the Catamount Community Forest, Vermont
May 19	Webinar	Wildlife Forestry in Bottomland Hardwood Forests
May 20	Webinar	Seeing the Forest: Sustainable Wood Bioenergy in the Southeast US.
May 21	Webinar	Forest Birds. #6 in the Forest Adaptation Webinar Series
May 21	Webinar	Using the Wildfire Risk to Communities Website
May 26	Webinar	Ecological Forestry in Mountain Cove Forests of the Appalachian Region
May 27	Member call	Southeast Region Guild member call
May 27	Webinar	LANDFIRE Remap in the North Central United States
May 27	Webinar	Managing Fire for Water
May 28	Webinar	Woodland Owner Lunch and Learn – Managing Your Woodlands with Prescribed Fire
May 28	Webinar	Data, Science, and Methods behind the Wildfire Risk to Communities
June 3	Webinar	FCWG: Wood Utilization, Land Use and Global Outlook
June 17	Webinar	LANDFIRE Remap in the Southeastern United States
June 17	Webinar	State of Montane Conservation and Management in Maine
June 25	Webinar	Regeneration issues. #7 in the Forest Adaptation Webinar Series
August 7	Morgantown, WV	Mountain Cove Forest Management and Conservation in the Central Appalachians
August 20 - 22	Asheville, NC	Celebrating the roots of Guild forestry - 25th anniversary celebration!
October 6 - 10	Luxembourg	ProSilva 30th anniversary meeting in Luxembourg
October 26 - 27	Rangeley, ME	Symposium on Climate Change in Maine's Mountains
Rescheduled...TBD	Corvallis, OR	Save the date! 25th Anniversary Guild Gathering! More details soon.

Welcome New Members

Professional members

Ann Duff, Forester	Jacksonville Beach, FL
Rexx Janowiak, Green Timber Consulting Foresters	Pelkie, MI
Wendy Ledbetter, The Nature Conservancy	Lumberton, TX
Rachel Mickey, Washington Dept of Natural Resources	Bellevue, WA
Aaron Plaughner, WestRock	Alderson, WV

Affiliate members

Elizabeth Morse	Otis, ME
-----------------	----------

Student members

Hannah Briner, University of Alabama	Tuscaloosa, AL
Eric Hagen, University of Vermont	Burlington, VT
Lukas Kopacki, University of Vermont	Burlington, VT
Peter Larkin, University of Vermont	Larchmont, NY
Aidan Powell, Colorado College	South Burlington, VT

Stewards Circle Donors

Court Ballinger, Oregon State University	Corvallis, OR
Amanda Mahaffey, Forest Stewards Guild	Brunswick, ME

Thank you to all of our [Stewards Circle donors](#) for supporting the Guild's work!

Organizational Sponsors

Thank you to our [organizational sponsors](#)! Your support is essential to fulfilling our mission of putting the forest first.





How to help

You can help us more confidently plan for the future and meet our 25th Anniversary Challenges! Set up [auto-renew](#) on your membership or [monthly giving](#) when you donate (\$25 monthly puts you in the Stewards Circle, but no amount is too small). As always, you can also: become an [organizational sponsor](#) or join our [Stewards Circle](#) today! A [donation](#) at any level directly supports our forests. We welcome professional and affiliate [members](#) who advance the stewardship of forests across the landscape. If you currently have a gift membership, or are not a member, please [join](#) today! If you haven't renewed yet, please [renew now](#).

You can also support the Forest Stewards Guild by shopping on [Amazon Smile](#) for any holiday gifts you cannot buy locally. And, share our [GuideStar Profile](#) with anyone looking for an upstanding charity.

Notes

Check out our new webinar library webpage, where we will continue to collect recordings of completed webinars you may have missed! With everything on offer these days, you likely can't attend everything live!

The **Spring 2020, 25th Anniversary edition of the Forest Steward** is now online. Enjoy!

Ecological Silviculture Foundations and Applications is a new book by Guild members Brian J. Palik, Anthony W. D'Amato, and Jerry F. Franklin, along with Norman Johnson. Classical silviculture

has often emphasized timber models, fundamentally based in production agriculture. This book presents silvicultural methods based in natural forest models—models that emulate natural disturbances and development processes, sustain biological legacies, and allow time to take its course in shaping stands. Nice work everyone...this is so exciting!

NESAF Quarterly features awards for Amanda Mahaffey, Barrie Brusila, and other current and past Guild members! If you missed it in March, check out the [ATL highlight on Amanda and Barrie](#) during Women's History Month 2020.

Tick Survey: Researchers at the University of Georgia, Hollins University, Duke University, Clemson University and the University of Rhode Island are conducting a study ("Investigating COVID-19 impacts on the epidemiology of tick-borne diseases in people and pets") to determine whether COVID-19 restrictions have had an effect on the time spent outdoors by people or their pets and whether this change is associated with an increased risk of exposure to ticks or tick-borne diseases. Anyone 18 or older and a resident of the United States or Canada can [participate](#).

Have notes you'd like to share with fellow Guild members? Contact Colleen Robinson, membership@forestguild.org.

Publications and Research

Physiological responses of eastern hemlock to light, adelgid infestation, and biological control: Implications for hemlock restoration. Silvicultural treatments may improve long-term health and survival of infested hemlock trees and the integration of treatments with existing strategies deserves continued exploration.

Chinese tallow story map from Texas A&M Forest Service.

Deadly imports: In one U.S. forest, 25% of tree loss caused by foreign pests and disease.

Jobs

Be sure to check out the [job opportunities](#) in forest stewardship on the Forest Stewards Guild webpage. They include a [Special Projects Forester](#) and a [Fire Management Officer](#) in NM, [Forest Stewards Youth Corps Crew Members](#), a [Fire Adapted Communities Coordinator](#) and a [Forester](#) in NV, and more!

Forest Stewards Guild - <http://foreststewardsguild.org> - 505-983-8992 - membership@forestguild.org

This email was sent to colleen@forestguild.org. If you are having trouble viewing this email, you may [also](#) [view it online](#). To opt out of all communications, [click here](#).

[Forward email](#).





[To view ATL online click here](#)

A note from the Director

This is not a time to stay silent. The grave injustices and racism in our country demand a response. Read a statement from Zander Evans on [Racial Justice and the Role of Socially Responsible Forestry](#).

The Guild's members, board, staff, and Membership and Policy Council are all thinking about what we, as individuals and as an organization, need to do to help overturn systemic racial injustices. [The Guild is working to take concrete steps to address inequity in our work](#). Making forestry, conservation, and land stewardship more diverse and inclusive will take all of us, and we welcome your ideas and feedback.



The Guild has always recognized that the social and the ecological are inseparable, as our student member Hanusia Higgins notes in her [article on saving hemlocks](#). We also know that the more holistic our community is, the better we can serve the forests and all who depend on them. Thank you to everyone who has renewed their membership recently! If you haven't already, [please do so now](#), as this membership year ends next week. We welcome many new members this month and offer all the best to our own [Nick Biemiller, whose partnership with the Guild will continue to be valued as he moves to new opportunities](#). We thank you all for your presence in this community and look forward to hearing your ideas for future virtual and on-the-ground [events](#) and [publications](#).

A handwritten signature in black ink that reads "Zander".

NEWS FROM THE FOREST

Helping hemlocks, helping humans (student voice installment #2)

Written by Hanusia Higgins, Guild student member.

Last year, I served as an AmeriCorps member with the Hemlock Restoration Initiative of WNC Communities in Asheville, North Carolina. This program's mission is to protect and preserve the hemlock trees of western North Carolina from a devastating invasive pest: the hemlock woolly adelgid. I got to monitor for adelgid-eating beetles, educate landowners on how to save their trees, and treat hemlocks with chemical insecticide to protect them from the adelgid. One experience that stands out most is treating the majestic hemlocks of Violet Hill Cemetery. The fates of



New opportunities, new connections

Written by Zander Evans and Amanda Mahaffey

As many of you have heard, Nick Biemiller has transitioned from the Forest Stewards Guild to the Ruffed Grouse Society / American Woodcock Society (RGS/AWS). We are fortunate to have a great staff at the Forest Stewards Guild, and while we would like to keep all our energetic, enthusiastic, and effective staff, change is inevitable. In fact, supporting staff in new endeavors has helped the Guild grow. Nick's move, for example, opens up a golden opportunity to build new partnerships.



[Read More](#)

Celebrating our first 25 years...

We have announced that our 25th anniversary Guild Gathering event in Asheville, NC is postponed until 2021. More details will be shared soon about that. Meanwhile, we are still celebrating! Please visit our [25th anniversary webpage](#) and help us virtually gather by sharing your stories, quotes, photos, and more. You can email membership@forestguild.org to submit thoughts and contributions to this page. Also, we are accepting ideas for an alternative celebration that we can still safely have this year, online, on the phone, in print, or otherwise. Please send your ideas our way!

Upcoming Events

Want Forest Stewards Guild members to know about an event? Have a 2020 webinar or project idea? Let us know! Email colleen@forestguild.org. Also, check out our **new webinar library** of recorded webinars you may have missed!

Now thru July 31	Via email	Call for Presentations for NM Wildland Urban Fire Summit
Extended thru Aug 31	Online Materials	Northeast Silviculture Institute for Foresters available online – 40% off for Guild members!
July 17	Webinar	State of Montane Conservation and Management in Maine
July 22	Webinar	Managing Emerald Ash Borer and Climate Change
July 23	Webinar	Restoring resilient ecosystems, communities, and economies in complex terrain: the Western Klamath Restoration Partnership
July 29	Wautoma, WI	Sustainable Forestry and Managing for Rare, Threatened, or Endangered Species
August 7	Morgantown, WV	Appalachian Cove Virtual Series - The effect of timber harvest on the growth of American Ginseng
August 13 (new date)	Webinar	Communication for Climate Change Adaptation (formerly "webinar series forum")
Sept 14 - 17	Virtual	National Tribal and Indigenous Climate Conference
Sept 24	Webinar	Physiological Response of Trees in Maine Mountain Forests to Climate Stress
October 6 - 10	Luxembourg	ProSilva 30th anniversary meeting in Luxembourg
October 26 - 27	Rangeley, ME	Symposium on Climate Change in Maine's Mountains
Rescheduled...TBD	Corvallis, OR	Innovative Forestry Summit and 25th Anniversary Guild Gathering!
Aug 19 - 22, 2021	Asheville, NC	Celebrating the roots of Guild forestry - 25th anniversary celebration!
September 18, 2021	Centerville, PA	Loving the Land Through Working Forests Conference

Welcome New Members

Professional members

Robert Addington, The Nature Conservancy	Boulder, CO
Chris Coxen, National Wild Turkey Federation	Aberdeen, NC
Sara Kelso, Delta County Conservation District	Gladstone, MI

Affiliate members

--	--

Molly Anderson	Gresham, OR
Jordan Stone, Cottonwood Gulch Foundation	Albuquerque, NM

Student members

Trestan Bryant, Sul Ross State University	Chester, TX
Kate Jones, North Carolina State University	Cary, NC
Virginia Samons	Rockford, IL
Brittany Wienke, Yale School of Forestry	New Haven, CT

Stewards Circle Donors

Anonymous	
Richard Carbonetti	Newport, VT
Mike Jani	Santa Cruz, CA
Christopher Riely	Providence, RI
Al Sample	Annandale, VA
Ken Smith	Sewanee, TN
Mary Snieckus	Silver Spring, MD
Brendan Whittaker	Brunswick, VT

Thank you to all of our [Stewards Circle donors](#) for supporting the Guild's work! Among others, all of the individuals above are *annual* Stewards Circle donors and their regular support makes a huge difference!

Organizational Sponsors

Thank you to our [organizational sponsors](#)! Your support is essential to fulfilling our mission of putting the forest first.





How to help

We are now in a new membership year (July 1, 2020 - June 30, 2021). If you haven't yet [renewed](#), doing so as promptly as you are able is an excellent way to help. Set up [auto-renew](#) on your membership or [monthly giving](#) when you donate (\$25 monthly puts you in the Stewards Circle, but no amount is too small), and give extra peace of mind. As always, you can also: become an [organizational sponsor](#) or join our [Stewards Circle](#) today! A [donation](#) at any level directly supports our forests. We welcome professional and affiliate [members](#) who advance the stewardship of forests across the landscape. If you currently have a gift membership, or are not a member, please [join](#) today! If you haven't renewed yet, please [renew now](#).

You can also support the Forest Stewards Guild by shopping on [Amazon Smile](#) for any holiday gifts you cannot buy locally. And, share our [GuideStar Profile](#) with anyone looking for an upstanding charity.

Notes

Thank you for your membership renewals for the 2020-2021 membership year! If you haven't yet renewed, perhaps you prefer to do so by mail. You are in luck because we will be sending renewal reminder letters soon! If you don't mind online renewal but just haven't gotten to it yet, please do as soon as possible and we can spare your mailing. Also, we are happy to help anytime! Renewal online, over the phone, or by mail can be fast and easy. For help email membership@forestguild.org.

The Guild joins outdoor industry leaders pledge to be inclusive. The Outdoor CEO Diversity Pledge connects leading outdoor brands with inclusion advocates to advance representation for people of color across the industry. We're focused on enhancing representation across staff and executive teams, media and marketing, and athletes/ambassadors. By building a relationship of support, empathy and understanding, versus external skepticism and internal stress, we're moving the outdoor industry towards authentic inclusion.

The Northeast Silviculture Institute for Foresters is available online for Guild members at 40% off! This offer has been extended until the end of August for Guild members. Check out this series of 5 two-day graduate-level training sessions for northeast foresters. Receive forester credits while staying safe at home. Click the link above for details and the promo code.

Covid impacts policy, regulation, and markets. Learn more with a **subscription to the Forest and Markets email list**. An example from a recent email is the announcement of a new podcast from the Western Governor's Association on the *Next Generation of Rural*.

Lomakatsi Restoration Center will continue the legacy of the Northwest Forest Worker Center serving hundreds of forest workers throughout California, Oregon and Washington with resources and counsel around safety and workplace rights.

Understanding Forest Carbon Management is an intensive, online short course from Michigan State University designed to provide a robust introduction to the benefits of forest land management specific to carbon while offering clear action paths.

Maine Audubon has posted a webinar recording on Forestry for Maine Birds, co-hosted by the Guild. Also see their **video shorts** introducing Forestry for Maine Birds (scroll to bottom of that page).

Have notes you'd like to share with fellow Guild members? Contact Colleen Robinson, membership@forestguild.org.

Publications and Research

Burning Without Borders: Cooperatively Managing Wildfire Risk in Northern Colorado, mentions the Guild, and is one in an entire Fact Sheet Series they have put out this year.

Finding common ground: agreement on increasing wildfire risk crosses political lines. "Decision makers have an opportunity to engage diverse stakeholders in developing policies to mitigate increasing wildfire risk without invoking climate change, which remains politically polarizing in some communities."

Bioregional Assessment of Northwest Forests, USDA.

Jobs

Be sure to check out the *job opportunities* in forest stewardship on the Forest Stewards Guild webpage. They include two graduate research assistantships in MS and SC, the *Chief State Forester* in WI, a *Regional Plant Pathologist* USFS outreach notice in WI, a *Forester* in NH, a *Lead Ecological Forester* in OR, a *half-time Program Director* in VT, a *Special Projects Forester* and a *Fire Management Officer* in NM, *Forest Stewards Youth Corps Crew Members*, and a *flexible but leadership position in southern Colorado*, and more!

Forest Stewards Guild - <http://foreststewardsguild.org> - 505-983-8992 - membership@forestguild.org

This email was sent to colleen@forestguild.org. If you are having trouble viewing this email, you may [also view it online](#). To opt out of all communications, [click here](#). Email Marketing By

[Forward email](#).





[To view ATL online click here](#)

A note from the Director

2020 continues to be a struggle from climate change aggravated fires across the west to the ongoing pandemic. To stay optimistic, I focus on where we're making progress and the good work getting done in the forests. Even during a pandemic, the Guild was able to safely provide [summer jobs in conservation to rural New Mexican youth](#) and a [great office intern](#). We've welcomed [Dr. Jen Chandler](#) to our Southeast office and she's already presented for one of [our virtual events](#). Guild members continue to do [innovative work in the woods](#) and on [forest policy from Canada to New Mexico](#) (if you want to get involved in policy with the Guild consider [being part of our Membership and Policy Council](#). Nominations will be accepted soon). Our strong [membership renewal](#) response and donations show that Guild members are committed to this community, optimism, and continued work to put the forest first!

A handwritten signature in black ink, appearing to read "Jen Chandler".



NEWS FROM THE FOREST

Forest Stewards Guild: A view from Canada

Written by Oliver Ray Travers.

The COVID 19 virus is sending a message that humanity is putting excessive stress on nature. Conventional forest management based on assumptions of ecological stability and long-term predictability, no longer serve as the conceptual foundation for forest policy and practice. In central British Columbia, Canada there was a major mountain pine beetle epidemic 2003 to 2016. Combined with large-scale clearcut salvage logging, the results are numerous, unintended ecological, economic, social, and cultural consequences.



[Read More](#)

Welcome Jen Chandler, Guild Southeast Region Manager

Written by Jennifer Chandler

The thing that drew me to the Forest Stewards Guild was its vision of “ecologically, economically, and socially responsible forestry as the standard...” These words resonate with me and have formed a basis for the work I’ve done in the past, particularly with American ginseng. I feel fortunate to work for an organization that brings together people with vastly different backgrounds from all over the country to work toward a meaningful common goal. My background in ecological research spans from forest ecology work in Appalachia to climate change work in northern Alaska, and these research skills will translate to the active, applied work that I’ll be involved in as the Southeast Region Manager at the Guild.



[Read More](#)

FSYC - A summer of safety

Written by Tyler Wysner

The Forest Stewards Guild Youth Conservation Corps, or FSYC, aims to provide valuable field experience for young adults interested in forestry and conservation. In collaboration with the Forest Service, crew members participate in ongoing projects and gain hands-on skills in areas such as trail maintenance, fencing, stand monitoring, and more. Safety is always a top priority for the crews, but this year following safety protocols has taken on a new meaning. The Guild took special care to prepare guidelines and protocols in collaboration with physician recommendations to keep the crews safe and healthy.

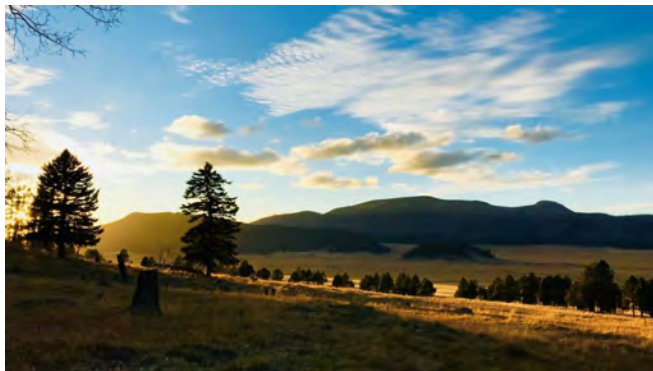


[Read More](#)

A budding conservationist

Written by Tyler Wysner

I have always been fascinated and enamored by the natural world and how it works. Studying biological sciences enabled me to approach my wonderment of nature with a scientific mindset, and therefore deepen my understanding and captivation by it. I moved to New Mexico from Indiana about 4 years ago after a short visit that left me overtaken by the beauty of the landscape. I fell in love with the open sky, the elegant mountains, and the enchanting forests. It was then that I knew I wanted to be part of the conservation efforts to protect these amazing lands.



[Read More](#)

Celebrating our first 25 years...

Stay tuned this autumn for opportunities to purchase 25th anniversary Guild t-shirts and hats!! Please help us add to our [25th anniversary webpage!](#) We'd love to share your stories, quotes, photos, ideas, and more. You can email membership@forestguild.org to submit thoughts and contributions to this page.

Upcoming Events

Want Forest Stewards Guild members to know about an event? Have a 2020 webinar or project idea? Let us know! Email colleen@forestguild.org. Also, check out our [new webinar library](#) of recorded webinars you may have missed!

Extended thru Aug 31	Online Materials	Northeast Silviculture Institute for Foresters available online – 40% off for Guild members!
Aug 22	Clear Lake, WI	Women's Woodland Paddle
Sept 4	Virtual	Appalachian Virtual Cove Series - Tom's Run "Field Tour"
Sept 14 - 17	Virtual	National Tribal and Indigenous Climate Conference
Sept 17	Webinar	Insights for resilient forest landscapes in the Rogue Basin of southwestern Oregon
Sept 24	Webinar	Physiological Response of Trees in Maine Mountain Forests to Climate Stress
October 2	Webinar	Appalachian Virtual Cove Series - Invasives Management
October 6 - 10	Luxembourg	ProSilva 30th anniversary meeting in Luxembourg
October 12	Webinar	Inclusivity in Cooperative Extension Programming, With an Emphasis on Natural Resources and Climate Change
October 26 - 27	Rangeley, ME	Symposium on Climate Change in Maine's Mountains
Nov 6 (tentative)	Webinar	Appalachian Virtual Cove Series - Aquatic Biodiversity
Rescheduled...TBD	Corvallis, OR	Innovative Forestry Summit and 25th Anniversary Guild Gathering!
Aug 19 - 22, 2021	Asheville, NC	Celebrating the roots of Guild forestry - 25th anniversary celebration!
September 18, 2021	Centerville, PA	Loving the Land Through Working Forests Conference

Welcome New Members

Professional members

Scott James	Loveland, CO
Will Harling, Mid Klamath Watershed Council	Orleans, CA
Andrew McComb, Consulting Forester	Monona, WI

Affiliate members

Jai Lakshman, Native Development Associates	Santa Fe, NM
Ken Law	Chattanooga, TN
Katie O'Brien	Marquette, MI
Kate Sayles, Northern RI Conservation District	Wakefield, RI

Student members

Bradley Coco, Yale University School for the Environment	San Antonio, TX
Nancy Marek, University of Connecticut	Storrs, CT
Ryan Smith	Columbia Cross Roads, PA

Stewards Circle Donors

Peter Evans	Albuquerque, NM
Scott James	Loveland, CO

Thank you to all of our [Stewards Circle donors](#) for supporting the Guild's work! Stewards Circle donors and their regular support makes a huge difference!

Organizational Sponsors

Thank you to our [organizational sponsors](#)! Your support is essential to fulfilling our mission of putting the forest first.





How to help

If you have not yet [renewed](#) for July 1, 2020 - June 30, 2021, please respond to the letter you recently received in the mail. Your prompt response and renewal are an excellent way to help. As always, you can become an [organizational sponsor](#) or join our [Stewards Circle](#) today! A [donation](#) at any level directly supports our forests. We welcome professional and affiliate [members](#) who advance the stewardship of forests across the landscape. If you currently have a gift membership, or are not a member, please [join](#) today!

You can also support the Forest Stewards Guild by shopping on [Amazon Smile](#) for any holiday gifts you cannot buy locally. And, share our [GuideStar Profile](#) with anyone looking for an upstanding charity.

Notes

Thank you for your membership renewals for the 2020-2021 membership year! If you haven't yet renewed, please respond to your mailed reminder letter soon! We are happy to help anytime! Renewal online, over the phone, or by mail can be fast and easy. For help email membership@forestguild.org.

At the Guild, we have been diligently working to put our words into actions when it comes to social justice. In our Southeast office, one of the first steps we have taken is recognizing and acknowledging Indigenous relationships with the landscape. We are working toward incorporating Indigenous Land Acknowledgements into our regional management plans and facilitating conversation about what it looks like to recognize Indigenous relationships with southern forests both historically and presently.

Introducing the Women's Forest Congress, a forum to develop strategies and solutions for forests through a female lens.

Guild member Sarah Deumling has been highlighted for her forest management that aids in carbon-drawdown.

Access a survey to contribute to the first comprehensive global assessment of forest education at all levels, from primary school to university, technical and vocational training programmes, and share the survey with your networks. The survey is led by FAO, the International Tropical Timber Organization (ITTO) and the International Union of Forest Research Organizations (IUFRO).

Have notes you'd like to share with fellow Guild members? Contact Colleen Robinson, membership@forestguild.org.

Publications and Research

Check out *SilviCast*, a podcast devoted to silviculture: the science, the practice, and the art of forestry.

The impact of urban sprawl on forest landscapes in Southeast Michigan. An increase in forested area across the region as a positive finding, this analysis also revealed that the region's forested lands grew increasingly fragmented due mainly to increased urban sprawl.

Native American Imprint in Paleoecology is cited in [this PennState News article](#), which states that "The historical record is clear, showing that for thousands of years Indigenous peoples set frequent fires to manage forests to produce more food for themselves and the wildlife that they hunted, and practiced extensive agriculture."

Evidence for a paradigm shift in wildfire management is shown in *2009 Policy Guidance* along with other concurrent advances in fire management that motivated an increase in the number of naturally ignited wildfires managed with strategies other than full suppression.

Forest density intensifies the importance of snowpack for tree growth. A new study suggests that future reductions in seasonal snowpack as a result of climate change may negatively influence forest growth in semi-arid climates, but less so in wetter climates.

Guild member Mark Jacobs has been recognized in a new book on Ecological Silviculture. The authors include some names familiar to Guild members.

In their ***White Paper: Family-owned Forests and Carbon***, the American Forest Foundation (AFF) has explored how forests, specifically U.S. family-owned forests, can be a significant component to a comprehensive strategy to reducing carbon.

Expanding the use of prescribed fire in New Mexico, final report. The New Mexico House of Representatives passed House Memorial (HM) 42 in the 2019 session requesting the Energy, Minerals and Natural Resources Department (EMNRD) explore ways to expand the practice of prescribed fire on private lands in New Mexico. The memorial, drafted by the Guild and partners, created a broad working group of experts and stakeholders from across the state, including the Guild, to conduct research and analysis of expansion strategies and to develop a report to the legislature. The memorial identified liability, permitting, training, and smoke as major interconnected issues to be examined by the working group.

This final report was presented to the New Mexico Senate Water and Natural Resources Committee in July 2020. The Guild, the New Mexico Prescribed Fire Council, The Nature Conservancy, and others continue to work with elected officials so that the report's recommendations can be used to create and pass new prescribed fire legislation.

Jobs

Be sure to check out the [job opportunities](#) in forest stewardship on the Forest Stewards Guild webpage. They include an [Urban and Community Forestry Program Manager](#) and a [Fire Management Officer](#) in NM, a [Regional Plant Pathologist](#) for USFS in WI, [State Lands Management Forestry Director](#) in Mass., a [Lead Ecological Forester](#) in OR, another [Fire Management Officer](#) in NM, and a [flexible but leadership position](#) in southern Colorado, and more!

Forest Stewards Guild - <http://foreststewardsguild.org> - 505-983-8992 - membership@forestguild.org

This email was sent to colleen@forestguild.org. If you are having trouble viewing this email, you may [also view it online](#). To opt out of all communications, [click here](#).

[Forward email](#).





[To view ATL online click here](#)

A note from the Director

Our thoughts have been with those effected by the wildfires sweeping the western US and in the path of southeastern hurricanes. These disasters only strengthen our commitment to work every day to slow and mitigate climate change which is a key driver of the destruction. [A new addition to the Guild team, Gabe Donaldson](#), is expanding our capacity to respond to the other driver of high severity wildfire by returning good fire to its ecological role. [The Guild is also hiring to expand our work in the Northeast!](#) We're heartened by the next generation and their passion for ecological forestry in [South Carolina](#) and [New Mexico](#).



Though we can't get together in person, our network of members and supporters across the country has provided a source of strength for 25 years, as [Bren Whittaker's reflections remind us](#). If you want to show your pride in our Guild check out the [25th anniversary t-shirts!](#) Professional members who want to get more engaged should [consider running for the Membership and Policy Council](#) and everyone is welcome to participate in the array of virtual [events](#).

A handwritten signature in black ink, which appears to read "Zander".

NEWS FROM THE FOREST

Guild interns at U.S. Fish and Wildlife offices (September's student voice)

Written by Mike Lynch.

The Forest Stewards Guild has partnered with the US Fish and Wildlife Service for the last several years to provide students with hands-on experiences to learn how forestry and wildlife management work together on public lands. This position had historically been a 26-week position that was best suited for recent graduates. In 2020, we switched to a 12-week summer internship model which opened the opportunity to current students that were at or near the end of their academic studies. These students are hired by the Guild and based at the Carolina Sandhills National Wildlife Refuge in McBee, South Carolina. We will be offering this opportunity again as a 12-week position in 2021 and look forward to getting to know another pair of great students like we had in 2020.



[Read More](#)

Welcome Gabe Donaldson, to the Guild's fire team!

Written by Gabe Donaldson

A portrait of a middle-aged man with a shaved head and a light brown beard. He is smiling and looking directly at the camera. He is wearing a grey, textured knit sweater over a black shirt. The background is a blurred outdoor setting with green foliage.

Two FSYC members win North Face Explorer Fund scholarships!

Two individuals from the summer Forest Stewards Youth Corps (FSYC) demonstrated excellence in environmental stewardship, career aspirations, and community leadership in their applications to The North Face Explorer Scholarship. Scholarship winners Marisa Armijo and Derek Martinez from the Las Vegas Ranger District FSYC crew will receive \$1100 towards their college tuition and books this fall.

[illegible]

[Read More](#)

Celebrating our first 25 years...

Our own Dakota Wagner designed the art on these t-shirts, depicting various forest types and landscapes where we make a difference. These t-shirts will only be available until October 31, 2020. Choose from three short-

sleeve t-shirt colors and a long-sleeve in bright orange to be noticed in the field. 100% cotton. Order as many as you like and have them shipped directly to you! (Unfortunately, anniversary hats and other items will not be produced, but we intend to have more general Guild products available for purchase in 2021.)

If you cannot order online or need assistance, please contact membership@forestguild.org for help with your order.

Also, we have a new [founder's essay from Bren Whittaker](#) and some additional photos to share on our [25th anniversary webpage!](#) We'd love to share your stories, quotes, photos, ideas, and more. Please email membership@forestguild.org to submit thoughts and contributions to this page.

MPC Update - nominations accepted until Oct 6!

Nominations for next year's [Membership and Policy Council representatives](#) are being accepted now. If you would like to nominate yourself or another current, Professional or Retired Professional Guild member for our November election, please do so by October 6. To nominate someone, contact MPC chair Shane Hetzler at shane@troutmountain.com, or membership@forestguild.org, 505-983-8992 ext. 700 with the person's name. In a difficult year for forests, people, politics, and the world, this is one place where Guild members who are eligible to serve and vote can make a direct difference for forests by doing so.

Upcoming Events

Want Forest Stewards Guild members to know about an event? Have a 2020 webinar or project idea? Let us know! Email colleen@forestguild.org. Also, check out our [new webinar library](#) of recorded webinars you may have missed!

Sept 22	Webinar	Prospects for Resistance Breeding in Trees
Sept 23	Webinar	Woodland Owner Webinar Series: Forestry and Climate Change
Sept 24	Webinar	Empowering and Engaging Vermont's Women Landowners
Sept 24	Webinar	Efficacy of Post-fire Treatments
Sept 24	Webinar	Physiological Response of Trees in Maine Mountain Forests to Climate Stress
Sept 30	Webinar	Virtual and interactive workshop on prescribed fire in northern Minnesota
Sept 30 - Oct 1	Virtual	Colorado Wildland Fire Conference
October 2	Webinar	Appalachian Virtual Cove Series - Invasives Management
October 8	Webinar	Invasive Plants & Their Impact on Wildlife and Landscaping for Wildlife with Native Plants
October 8	Webinar	Cold Hollow to Canada Evening of Story and Conversation
October 12	Webinar	Inclusivity in Cooperative Extension Programming, With an Emphasis on Natural Resources and Climate Change
October 26 - 27	Rangeley, ME	Symposium on Climate Change in Maine's Mountains
Nov 6 (tentative)	Webinar	Appalachian Virtual Cove Series - Aquatic Biodiversity

November 12	Webinar	Managing Woods and Fields for Wildlife
November 19	Webinar	Fueling Collaboration Panel Discussion Series kick off (fire mgrs and researchers)
Rescheduled...TBD	Corvallis, OR	Innovative Forestry Summit and 25th Anniversary Guild Gathering!
Aug 19 - 22, 2021	Asheville, NC	Celebrating the roots of Guild forestry - 25th anniversary celebration!
September 18, 2021	Centerville, PA	Loving the Land Through Working Forests Conference
December 10	Webinar	Human Wildlife Interactions and Identifying Wildlife by Tracks, Marking, and Scat
June 9 - 12, 2021	Luxembourg	ProSilva 30th anniversary meeting in Luxembourg (postponed from Oct 2020)

Welcome New Members (started students for sept)

Affiliate members

Jonathan Brooks, Massachusetts Division of Fisheries and Wildlife	Westwood, MA
Patrick and Bet Z Smith	Woodstock, CT

Student members

Meredith Bean, Clemson University	Pendleton, SC
Walker Cammack, Yale School of the Environment	New Haven, CT
Jamie Dahl, Colorado State University	Fort Collins, CO
Victoria Peck, Michigan Technological University	Hancock, MI
Sean Sellers, University of Florida School of Forest Resources and Conservation	Sarasota, FL

Stewards Circle Donors

Anonymous	
Phillip Battaglia	Redding, CA
Seth Cohen	Santa Fe, NM
Charles Moreno	Center Strafford, NH

Thank you to all of our [Stewards Circle donors](#) for supporting the Guild's work! Stewards Circle donors and their regular support makes a huge difference!

Organizational Sponsors

Thank you to our [organizational sponsors](#)! Your support is essential to fulfilling our mission of putting the forest first.



How to help

Membership: Be sure your membership is always up to date. We are happy to help with [renewals](#) or status checks, and you can also view your membership status online by logging into your membership portal if you've set that up. [Renew today](#) through next June if you haven't already...its an excellent way to help. Renewal online, over the phone, or by mail can be fast and easy. Email membership@forestguild.org with questions. We welcome professional and affiliate [members](#) who advance the stewardship of forests across the landscape. If you currently have a gift membership, or are not a member, please [join](#) today!

Financial support: As always, you can become an [organizational sponsor](#) or join our [Stewards Circle](#) today! A [donation](#) at any level directly supports our forests.

During giving seasons: You can also support the Forest Stewards Guild by shopping on [Amazon Smile](#) for any holiday gifts you cannot buy locally. And, share our [GuideStar Profile](#) with anyone looking for an upstanding charity.

Notes

Thank you for your membership renewals for the 2020-2021 membership year! Your autumn anniversary issue of the Forest Steward will be in the mail before the next e-newsletter! Watch for it in October and enjoy sobering and inspiring insights from Guild members pondering our next 25 years in excellent, conservation forestry. If you have not yet [renewed](#) for July 1, 2020 - June 30, 2021, please [do so now](#) to ensure you receive your autumn Forest Steward magazine. For those of you who read it online, it will be available there and announced in October's e-newsletter too.

The Guild is dedicated to fostering an environment that is sensitive and responsive to issues of harassment, insensitivity, and bullying. As our organization continues to grow, so does our need to develop and implement formal, robust anti-harassment and active bystander curricula. The Guild was recently awarded funds from the Sapelo Foundation to consult with experts as we develop and codify anti-harassment training materials that are applicable across the Guild, from our Forest Stewards Youth Corps to our executive level. Additionally, we will learn to “train the trainers” so that the lessons learned and the curriculum developed can be spread throughout the Guild to ensure long-lasting and far-reaching impacts. This effort represents just one of the many ways that the Guild strives to ensure people feel heard, included, and safe in the workplace.

Clemson University is conducting a survey called Assessing Attitudes Towards Women in Forest Entomology and Pathology. The purpose of this survey is to assess current attitudes towards women in forest entomology and pathology and to identify gaps in support available to women in these fields. All genders are encouraged to complete the survey! Questions or concerns can be sent directly to Jess Hartshorn, Ph.D. at jhartsh@clemson.edu. The survey closes at the end of September

Guild member Lynn Levine has a Woodland Wanderings YouTube series, for those who have trouble getting into the woods.

The Guild's FSYC Coyote Crew Leader, **Selina Chacon, was on the radio** a few weeks ago with New Mexico Youth Conservation Corps executive director Sarah Wood.

Undoing Injustice: Roanoke Electric Works to Empower Black Landowners.

Have notes you'd like to share with fellow Guild members? Contact Colleen Robinson, membership@forestguild.org.

Publications and Research

Invasive shrubs in Northeast US forests grow leaves earlier, Science Daily.

Jobs

Be sure to check out the [job opportunities](#) in forest stewardship on the Forest Stewards Guild webpage. They include our own Northeast Region Coordinator opening in ME, a Plant Diagnostic Lab Supervisor in MO, a Forestry Office/Accounting Manager in NH, Urban and Community Forestry Program Manager and Fire Management Officer in NM, a Forest Ecologist in Maine, State Lands Management Forestry Director in Mass., a Forest Analyst in North Carolina, a Lead Ecological Forester in OR, another Fire Management Officer in NM, an early outreach notice for a Biological Science Information Specialist in WI, and a flexible but leadership position in southern Colorado, and more!

Forest Stewards Guild - <http://foreststewardsguild.org> - 505-983-8992 - membership@forestguild.org

This email was sent to colleen@forestguild.org. If you are having trouble viewing this email, you may [also view it online](#). To opt out of all communications, [click here](#).

[Forward email](#).





[To view ATL online click here](#)

A note from the Director

Fall has come to forests across the country and it's a great time to be in the woods. In the Southeast, we're continuing our work on [shortleaf restoration](#). In the Southwest, we're celebrating the growth of the next generation of forest stewards like Chris Martinez, who used the Guild's Forest Stewards Youth Corps to launch his career. Across the country, there are great [virtual events](#) including discussions of [deer and regeneration](#), [inclusivity in extension](#), and [managing wildfires for resource benefit](#). The [Membership and Policy Council](#) continues to wrestle with challenging policy questions (like [Managing Plantations with the Guild](#)) and we have a great slate of new candidates to join the council.



We continue to celebrate the Guild's first quarter century. Publication of the [new book on Ecological Silviculture](#) this year is a nice coincidence. [Founding member Jeff Smith shares his reflections on the Guild](#) on our anniversary webpage. It is your last chance to get the [25th anniversary t-shirts](#)! Our 2020 Annual Review will be in mailboxes next month for current members and donors. If you are a late-in-the-year donor, please consider [donating in November](#) rather than December to save the Guild time and expense on end-of-year appeals and processing.

Thank you all for your work, your perspective, and for being part of this community.

A handwritten signature in black ink, appearing to read 'Zander'.

NEWS FROM THE FOREST

Shortleaf restoration continues...from a distance.

Written by Dakota Wagner.

Partnering with the National Fish and Wildlife Foundation, the Guild has been promoting shortleaf pine habitat restoration on the Cumberland Plateau of Tennessee and Kentucky since the Fall of 2019. Our partnerships continue as we build on the work completed thus far: hosting learn-and-burns and other educational events for landowners and practitioners, implementing prescribed burns, and more. Now, the Guild is working with Tennessee Wildlife Resources Agency (TWRA) to produce a shortleaf pine restoration plan for their Bridgestone-Firestone Centennial Wilderness WMA.



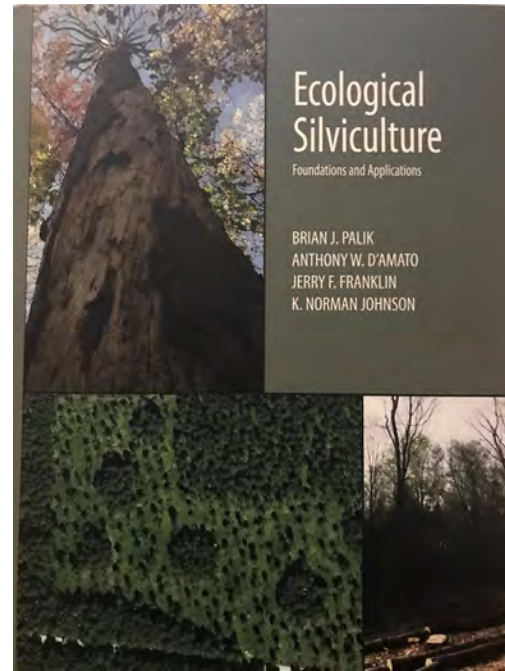
[Read More](#)

Ecological Silviculture: Foundations and Applications

Written by Amanda Mahaffey and Zander Evans

In the early days of the Forest Stewards Guild, silviculture was largely seen as a means of maximizing timber production. Today, a new textbook captures the tenets long upheld by Guild members and provides a comprehensive, scientific reference for justifying the holistic approach we take in our work. Furthermore, this text addresses ecological silviculture in the context of today's world of climate change and an ever-shifting forest policy landscape. *Ecological Silviculture: Foundations and Applications* is a worthwhile read for foresters of today and tomorrow.

The book is rich with thoughtful silvicultural approaches and photos from well-managed forests across the country, including examples from Guild foresters.



[Read More](#)

Open Doors: An FSYC success story (October's student voice)

Written by Tyler Wysner and Chris Martinez

Many of us have dreams of working in a particular place or doing a particular job, but not everyone possesses the resources or connections to turn those dreams into reality. For Christopher Martinez, the Forest Stewards Youth Corps (FSYC) Program opened doors that allowed him to make his dream of working with the Forest Service a reality.

Living in Peñasco his whole life, Chris had the mountains as his backyard. Jicarita and Truchas peaks are among his favorite spots to visit. Growing up with hiking, fishing, and hunting as a central part of his lifestyle, he aspired to work in the Forest Service from the start.

“It was my goal from high school to get into the Forest Service, and FSYC opened that door for me.”



[Read More](#)

Celebrating our first 25 years...

Remember to **order** your limited edition T-shirts by **October 31, 2020**.

All orders will ship on October 31 and arrive in mid-November to the address you put into your order.

Note: this is **not** a Guild fundraiser. We are selling them at or very near cost. If you want to wear or gift a Guild anniversary t-shirt, please **buy one or more!** But if you are simply looking to support the Guild, a **direct donation** is the way to go.

Our own Dakota Wagner designed the art on these t-shirts. More Guild products will be available for purchase in 2021, without the anniversary design.

If you cannot order online or need assistance, please contact membership@forestguild.org for help with your order.

Also, we have a new [founder's essay from Jeff Smith](#) on our [25th anniversary webpage](#)! We'd love to share your stories, quotes, photos, ideas, and more. Please email membership@forestguild.org to submit thoughts and contributions to this page.



MPC Update

Nominations for next year's [Membership](#) and [Policy Council](#) representatives are finalized. Elections will start in November, so keep an eye out for your voting survey email if you are a current Professional or Retired Professional member. Meanwhile, here is your [October MPC Update](#)!

Upcoming Events

Want Forest Stewards Guild members to know about an event? Have a 2020 webinar or project idea? Let us know! Email colleen@forestguild.org. Also, check out our [new webinar library](#) of recorded webinars you may have missed!

Oct 1 - Nov 12	Web Series	Post-Fire Webinar Series, Oregon State University Extension
October 20	Webinar	Deer, Invasives, Residual Density and Forest Regeneration
October 20	Webinar	Wisconsin Health Emergency: Communicating Solutions to the Climate Crisis
October 21	Webinar	Newfire, Assessing the work of wildfire and identifying Post-fire Management Needs
October 22	Webinar	Effects of policy change on wildland fire management strategies
October 22 - 23	Online	2020 New Mexico Wildland Urban Fire Summit
October 26 - 27	Rangeley, ME	Symposium on Climate Change in Maine's Mountains
October 26	Webinar	Inclusivity in Cooperative Extension Programming, With an Emphasis on Natural Resources and Climate Change
October 29	Webinar	Managing Plantations with the Guild: 3 regional examples
November 2	Online course	Adaptation Short Course!
November 6	Webinar	Appalachian Virtual Cove Series - Aquatic Biodiversity
November 12	Webinar	Managing Woods and Fields for Wildlife
November 19	Webinar	Fueling Collaboration Panel Discussion Series

		kick off (fire mgrs and researchers)
December 10	Webinar	Human Wildlife Interactions and Identifying Wildlife by Tracks, Marking, and Scat
June 9 - 12, 2021	Luxembourg	ProSilva 30th anniversary meeting in Luxembourg (postponed from Oct 2020)
Rescheduled...TBD	Corvallis, OR	Innovative Forestry Summit and 25th Anniversary Guild Gathering!
Aug 19 - 22, 2021	Asheville, NC	Celebrating the roots of Guild forestry - 25th anniversary celebration!
September 18, 2021	Centerville, PA	Loving the Land Through Working Forests Conference

Welcome New Members

Professional members

Pete Caligiuri, The Nature Conservancy	Bend, OR
Patrick Conlin, MA Division of Fisheries and Wildlife	Shelburne Falls, MA
Robert Kirmse, World Bank	Santa Fe, NM
Brenda McComb, retired	Philomath, OR

Affiliate members

Aaron Cajero	Jemez Pueblo, NM
Paul Clarke	Jemez Pueblo, NM
Cydney Cornell	East Durham, NY
George Main	Lebanon, ME
Ryan Suazo Hines	Santa Fe, NM

Student members

Kris Brown, University of Vermont	Burlington, VT
Mariah Choiniere, University of Vermont	Franklin, VT
Daria Etchings, University of Vermont	Burlington, VT
Kevin Fink, University of Vermont	Montpelier, VT
Oisin Harrington, University of Vermont - Rubenstein School	Middletown Springs, VT
Zoë Lidstrom, University of Maine	Orono, ME
Olivia Lopez, University of Vermont	North Andover, MA
Leigh Siracusano, Appalachian State University	Montvale, NJ

Stewards Circle Donors

Kathryn Fernholz	Crystal, MN
Sally Goble	Cottage Grove, OR
MLE Fund of the Chicago Community Foundation	

Thank you to all of our [Stewards Circle donors](#) for supporting the Guild's work! Stewards Circle donors and their regular support makes a huge difference!

Organizational Sponsors

Thank you to our [organizational sponsors](#)! Your support is essential to fulfilling our mission of putting the forest first.





How to help

Membership: Please be sure your membership is always up to date. We can help with [renewals](#) or status checks, and you can also view your membership status online by logging into your membership portal if you've set that up. [Renew today](#) through next June if you haven't already. Email membership@forestguild.org with questions. We welcome professional and affiliate [members](#) who advance the stewardship of forests. If you have a gift membership, or are not a member, please [join](#) today!

Donation timing: If you are a regular late-in-the-year donor, please consider donating in November rather than December. This helps us save on annual appeal communications near the end of the year and provides us with an extra sense of security. As always, you can become an [organizational sponsor](#) or join our [Stewards Circle](#) today! A [donation](#) at any level, at any time, directly supports our forests.

During giving seasons: You can also support the Forest Stewards Guild by shopping on [Amazon Smile](#) for any holiday gifts you cannot buy locally. And, share our [GuideStar Profile](#) with anyone looking for an upstanding charity.

Notes

Thank you for your membership renewals for the 2020-2021 membership year! If you have not yet [renewed](#) for July 1, 2020 - June 30, 2021, please [do so now](#). The 2020 Annual Review will be in mailboxes for current members in November, and posted online for members who have stated a preference to read it there.

The first draft of Forest Stewardship Council's US National Forest Stewardship Standard (Version 2) is now available for public consultation. You can contribute to the process with [the overview](#) that highlights changes in the standard, and priorities identified by the Standard Development Group, along with a message from the Standard Development Group Chair.

Have notes you'd like to share with fellow Guild members? Contact Colleen Robinson, membership@forestguild.org.

Publications and Research

[Reforestation Practices for Conifers in California.](#)

[People, Fire, and Pine: Linking Human Agency and Landscape in the Boundary Waters Canoe Area Wilderness and Beyond.](#)

Jobs

Be sure to check out the [job opportunities](#) in forest stewardship on the Forest Stewards Guild webpage. They include [our own Guild Burn Squad](#) positions, a [Biologist/Conservationist](#) in NM, a [Land Manager/Conservation Scientist](#) in FL, a [Research Associate](#) post-doc and a [field technician](#) in MI, a [Forestry Office/Accounting Manager](#) in NH, [Urban and Community Forestry Program Manager](#) and a [Fire Management Officer](#) in NM, [State Lands Management Forestry Director](#) in Mass., a [Lead Ecological Forester](#) in OR, and a [flexible but leadership position](#) in southern Colorado, and more!

Forest Stewards Guild - <http://foreststewardsguild.org> - 505-983-8992 - membership@forestguild.org

This email was sent to colleen@forestguild.org. If you are having trouble viewing this email, you may [also view it online](#). To opt out of all communications, [click here](#).

[Forward email.](#)





[To view ATL online click here](#)

A note from the Director

It has been a tough year and yet here at the Guild we have a lot to be thankful for. We're thankful for the work Guild stewards are doing every day in the woods. We're thankful for your support - your donations are crucial to the Guild's success. If you're able to, [please make a donation before the end of the year](#).

This issue highlights the [voice of a Guild student member, Anna Welch](#), a summary of the [Guild's work on wildfire](#), and a view from [the Pacific Northwest on Foresters for the Birds](#). Professional Guild members should make sure to [vote in the MPC election](#). There are lots of [jobs and notes](#) - including new climate policy and the Guild received an FSC award!

Thank you and please keep yourself safe this winter,

A handwritten signature in black ink, which appears to read 'Zander'.



NEWS FROM THE FOREST

Getting to know Guild student member Anna Welch

Editor's note: thank you to Anna for the interview, photos, and artwork. The Guild highly values supporting the next generation of forest stewards. Hearing from student members about their experiences, concerns, perspectives, and predictions is helpful.

My name is Anna Welch. I study at the University of Connecticut in the College of Agriculture, Health and Natural Resources. I am pursuing a Bachelors of Science in Natural Resources and the Environment with a concentration in Sustainable Forest Resources and a minor in Ecology and Evolutionary Biology. I joined the Guild to share and nurture my passion for the woods with the help of a broad network of likeminded individuals. In sum: I cannot get enough of trees and the outdoors!



[Read More](#)

Responding to the challenge posed by wildfire

Written by Zander Evans

Wildfire is arguably the biggest forest stewardship challenge for communities, landowners, and managers in a large swath of the country. The wildfires of 2020 have burned over 8.7 million acres and damaged nearly 17,700 structures – underscoring the devastating human impact. As smoke blanketed

communities this summer, several people asked what the Guild is doing to step up to the crisis. In fact, the Guild's work on reducing the negative impacts of wildfire on ecosystems and communities goes back decades.

[Read More](#)



Feathers, Sweaters, and Better Weather,

the Big Picture of Bird Migration

Written by Gregor Yanega

I invite you to consider migration, and how it is simultaneously subtle, regular, and large in scale. Somehow the reliability of migration, whether we are looking or not, is comforting. Yet, migration brings into focus the gulf between the near field and the long view, the proximate and ultimate causes operating on different scales. Over time, small, immediate decisions become consolidated into behaviors that are the grist of evolution and specific to each species. An anticipation of what might be does as much for the short-term and long-term survival of humans as knowing when to migrate, and where to stop, has mattered to populations and species of birds. However, we have more agency than birds do in how we respond to the anticipation of what might be.



[Read More](#)

Celebrating our first 25 years...

If you ordered one or more 25th anniversary Guild t-shirts, they should arrive in the mail soon! T-shirts have already started to ship out to the addresses on individual orders.

Check out our [25th anniversary webpage!](#) We'd love to share your stories, quotes, photos, ideas, and more. Please email membership@forestguild.org to submit thoughts and contributions to this page.

MPC Update

Election season is here! [Current Professional and Retired Professional members](#) are eligible to vote for [next year's Guild Membership and Policy Council representatives](#). If you have not voted yet, please look for an email from us dated November 6, 2020 about elections and click on the link to **complete your ballot survey by the December 6 deadline**. Also, **make a note for yourself that you have voted when you are done**. Votes are anonymous, so we cannot check later to confirm for you whether or not you voted. If you did not receive your ballot email, please contact membership@forestguild.org right away so we can get you what you need to vote. We will also send a reminder email on Monday, November 23.

Upcoming Events

Want Forest Stewards Guild members to know about an event? Have a 2020 webinar or project idea? Let us know! Email colleen@forestguild.org. Also, check out our [new webinar library](#) of recorded webinars you may have missed!

December 1	Webinar	Revealing historical fire regimes of the Cumberland Plateau through remnant fire-scarred shortleaf pines
December 2	Webinar	Warming/Changing Winters. Science and Practice: Forest Climate Change in ME Series

December 8 - 10	Online summit	Minnesota Forest Management and Wildlife Habitat Summit
December 10	Webinar	Human Wildlife Interactions and Identifying Wildlife by Tracks, Marking, and Scat
December 17	Webinar	Opening the Burn Window – Fueling Collaboration Panel Discussion Series, #2
January 6	Webinar	Forest Biodiversity and Species Shifts. Science and Practice: Forest Climate Change in ME Series.
January 21	Webinar	Fire and a Changing Climate – Fueling Collaboration Panel Discussion Series, #3
February 18	Webinar	Timber Management and Prescribed Fire – Fueling Collaboration Panel Series, #4
June 9 - 12, 2021	Luxembourg	ProSilva 30th anniversary meeting in Luxembourg (postponed from Oct 2020)
Rescheduled...TBD	Corvallis, OR	Innovative Forestry Summit and 25th Anniversary Guild Gathering!
Aug 19 - 22, 2021	Asheville, NC	Celebrating the roots of Guild forestry - 25th anniversary celebration!
September 18, 2021	Centerville, PA	Loving the Land Through Working Forests Conference

Welcome New Members

Professional members

Steven Hubbard, Hubbard Forest Solutions, LLC	Madison, WI
Mary Stuever, New Mexico Forestry Division	Chama, NM

Student members

Kelly French, University of Maine	Bangor, ME
Alison Luce, Oregon State University	Bend, OR
Abigail Mack, Oregon State University	Louisville, KY
Liam Smith, University of Vermont	Burlington, VT
Anna Welch, University of Connecticut	Storrs, CT
Otis Wood, University of Maine	Glenburn, ME

Stewards Circle Donors

Nancy Dickenson	Santa Fe, NM
Richard Donovan	Jericho, VT
Mark Jacobs	McGregor, MN
Valerie Matonis, in tribute to Greg Matonis	Redwood City, CA

Thank you to all of our [Stewards Circle donors](#) for supporting the Guild's work! Stewards Circle donors and their regular support makes a huge difference!

Organizational Sponsors

Thank you to our [organizational sponsors](#)! Your support is essential to fulfilling our mission of putting the forest first.





How to help

Membership: Please be sure your membership is always up to date. We can help with [renewals](#) or status checks, and you can also view your membership status online by logging into your membership portal if you've set that up. [Renew today](#) through next June if you haven't already. Email membership@forestguild.org with questions. We welcome professional and affiliate [members](#) who advance the stewardship of forests. If you have a gift membership, or are not a member, please [join today!](#)

Donation timing: If you are a regular late-in-the-year donor, please consider donating in November rather than December. This helps us save on annual appeal communications near the end of the year and provides us with an extra sense of security. As always, you can become an [organizational sponsor](#) or join our [Stewards Circle](#) today! A [donation](#) at any level, at any time, directly supports our forests.

During giving seasons: You can also support the Forest Stewards Guild by shopping on [Amazon Smile](#) for any holiday gifts you cannot buy locally. And, share our [GuideStar Profile](#) with anyone looking for an upstanding charity.

Notes

Thank you for your membership renewals for the 2020-2021 membership year, and for year-end donations! If you have not yet renewed for July 1, 2020 - June 30, 2021, you recently received an email inviting you to do so (except student members), or you can [renew now](#).

Our 2020 Annual Review is available now online, along with the [autumn 2020 issue of the Forest Steward magazine](#). Enjoy these dives into a stellar year for the Guild, despite so many challenges.

The Guild has won a Leadership Award from the Forest Stewardship Council! Forest Stewardship Council, the world's most trusted forest certification system, announced its 10th Annual FSC Leadership Awards, recognizing uncommon excellence that advances responsible forest management and forest conservation. Forest Stewards Guild won for building an effective coalition of certified businesses and stakeholders to support the rollout of the FSC Controlled Wood National Risk Assessment, improving conditions on the ground in key sourcing regions.

We are happy to announce the Wildfire Wednesdays Live webinar series! The Guild's Southwest region, along with partners at Santa Fe National Forest and others, are hosting a webinar roughly every other Wednesday for the next four months. Each one will have a specific topic focus. These will be broadcast via Facebook Live and incorporate Q&A from chats on Facebook. We will announce upcoming topics soon. For now, check out the Wildfire Wednesday Live videos from [October 7, 2020 for a background on the landscape and Coalition](#), and from October 21, 2020 for "[A history of fire and changing forests in the Santa Fe Fireshed](#)."

The Forest and Climate Working Group policy platform provides guidance to lawmakers on how to increase the ability of forests and forests products to fight climate change, providing policy options to advance four main goals: 1) Maintain and expand forest cover, 2) Improve forest practices for carbon, adaptation, and resilience, 3) Advance markets for forest carbon, forest products, and skilled labor, 4) Enhance climate data and applied science

The minutes from October's Southeast Region membership call are available online.

Researchers at Utah State University are investigating the link between aspen and fire behavior, and they are [surveying people who have observed fire burn in aspen. Participate in the survey here.](#)

Attention Professional members in northern states: You are invited to participate in the [2020 Northern Forest Manager Survey](#), a research project led by Dr. Rachel Schattman (University of Maine), Dr. Tony D'Amato (University of Vermont), and Dr. Todd Ontl (NIACS). The purpose of the research is to understand forest managers' perceptions of changing environmental and forest health

conditions, management decisions, and challenges to adopting new practices. You must be at least 18 years of age or older to participate in the survey.

The results of this anonymous survey will be used by our colleagues and collaborators to inform future outreach and education around challenges faced by foresters today, and by extension create important professional development opportunities for forest managers. The results will also be used to inform state and federal regulators and policy makers about important issues foresters are facing, which could have implications for the long-term viability of the forestry sector in Northern states.

Have notes you'd like to share with fellow Guild members? Contact Colleen Robinson, membership@forestguild.org.

Publications and Research

Trends in Abundance and Habitat Associations of Forest Birds. For more than two decades, the Southern Region of the USDA Forest Service has adhered to the Migrant and Landbird Conservation Strategy to address conservation concerns arising from long-term population declines among many bird species. To accomplish this objective, the Forest Service has conducted a regionwide program designed to improve monitoring, research, and management of avian populations and their habitats. A team led by NE CASC principal investigators Thomas Bonnot and Frank Thompson has conducted the first comprehensive study analyzing the 26-year dataset generated by this program. Its results, which have been assembled in a new report, will help inform conservation and management efforts in the Southern Region.

Future Forest Composition Under a Changing Climate and Adaptive Forest Management in Southeastern Vermont. The uncertainty around future impacts of global environmental change on forests has led to a heightened focus on developing alternative management approaches to sustain critical ecosystems. Coauthored by Guild member Anthony D'Amato, this article uses a spatially explicit forest landscape simulation model to examine and evaluate long-term effects of current and adaptive forest management under three projected climate scenarios within a Vermont forest. While it finds that land-use legacies and the inertia associated with long-term forest successional trajectories are likely to be the dominant influence on forest composition and density for the next 100 years, it also shows that climate will be a more prominent driver in these areas over the next 200 years.

Jobs

Be sure to check out the [job opportunities](#) in forest stewardship on the Forest Stewards Guild webpage. They include a [Community Forest Health Technician](#), a [Community Disaster Recovery Coordinator](#), and an [Executive Director](#), all for Trees Forever in Iowa, an [Assistant Program Manager, Spatial Analyst and Decision Support Specialist](#) for Colorado State University in Fort Collins, [3 Forestry Team Leader positions](#) in Wisconsin, [3 Forest Conservation Directors](#) for the Ruffed Grouse Society, a [Lead Management Specialist](#) for North Florida Land Trust, a [Forest Restoration Partnership Manager](#) for TNC in Minnesota, a [Vice President for Conservation and Stewardship](#) in Oregon, an [Urban and Community Forestry Program Manager](#) in New Mexico, a [Crew Boss, Contract Specialist, and Business Operations Specialist](#) in New Mexico, [Conservation Forester](#) for TNC in New York, and several more!

Forest Stewards Guild - <http://foreststewardsguild.org> - 505-983-8992 - membership@forestguild.org

This email was sent to colleen@forestguild.org. If you are having trouble viewing this email, you may [also view it online](#). To opt out of all communications, [click here](#).

[Forward email.](#)





[To view ATL online click here](#)

A note from the Director

Working everyday with Guild members, staff, and partners and their focus on real world solutions helps me stay optimistic. I'm looking forward to 2021 with optimism and excitement. I'm hopeful the vaccines will allow us to gather in person in forests and woodlots across the country. I'm excited about the great additions to the [Guild's Membership and Policy Council](#). I'm looking forward to the [Northwest Innovative Forestry Summit](#) that will be held at the end of March. I'm appreciative of the generous year-end donations that will help sustain our work in 2021. I'm inspired by the next generation of forest stewards and the landowners who are engaging in quality stewardship, often with the help of resources we provide.

Thank you for supporting the Guild and each in 2020 and I wish you all the best as we look forward to a new year!

A handwritten signature in black ink, appearing to read "Zander".



NEWS FROM THE FOREST

Welcoming Leonora back to the Guild team

Written by Leonora Pepper

This spring I returned to the Guild staff after a two-year hiatus living and working in Brazil. Despite an unusual homecoming amid the pandemic, it has been exciting to see our organization's ability to adapt in real time to continue providing strong initiative, collaboration, and program outcomes. I'm looking forward to an eventual return to working with colleagues in person, spending more time in the field, planning in-person events, and working more closely with members of our youth program.



[Read More](#)

Forestry for Maine Birds Program Offers New Videos

This partnership feature by Sally Stockwell of Maine Audubon

Are you interested in learning more about how you can help birds and other wildlife while managing your woodland? If so, check out the new Forestry for Maine Birds videos. The Forest Stewards Guild,

Maine Audubon, Maine Forest Service, and Maine Tree Farm have created a series of videos filmed in the woods that walk you through the essence of an in-person workshop. Topics include an introduction to Forestry for Maine Birds, why Maine is so important for birds, the habitat features birds need, a conversation with a Maine Forest Service forester and private consulting forester, and links to more resources and funding opportunities to help you manage your woodland “with birds in mind.”



[Read More](#)

Looking forward to 2021: Forest policy

Written by Zander Evans

The Guild works collaboratively with land stewards and communities in the woods and we take the same collaborative approach to policy. We work with like-minded organizations and coalitions to advance policies that promote excellence in forest stewardship and protect forests. The Guild’s policy work is guided by our Policy Statements, which are drafted by the Membership and Policy Council and voted on by professional members. For

example, our climate change policy statement guides our approach to engaging with the Forest and Climate Working Group (FCWG).



[Read More](#)

Celebrating our first 25 years...

Its been quite an anniversary year! Thank you for reflecting and celebrating with us in 2020. Most importantly, thank you for sticking with us, and helping to make this a stellar 25th birthday for the Guild despite external challenges. This community is strong and wise and compassionate and that is among the greatest celebrations of all.

Check out our [25th anniversary webpage!](#) We'd love to share your stories, quotes, photos, ideas, and more. Please email membership@forestguild.org to submit thoughts and contributions to this page.

MPC Update

Your newest [Membership and Policy Council](#) representatives for the 2021 - 2023 term were elected by Professional members early this month. Congratulations to Marianne Patinelli-Dubay, Mary Stuever, and Mark Jacobs (Mark is returning for a second term)! You can see their faces and brief comments on the MPC webpage now, and you'll be hearing more from your MPC in January about what's to come in the new year from this Council.

Thank you to all of our candidates for running, to all who nominated candidates, and to all who voted. Your engagement makes a broad, positive difference. Finally, thank you to John Gunn and Michael Leff, who will be stepping down from their MPC terms at the end of December. Your service is greatly appreciated!

Upcoming Events

Want Forest Stewards Guild members to know about an event? Have a webinar or project idea? Let us know! Email colleen@forestguild.org. Also, check out our [new webinar library](#) of recorded webinars you may have missed!

Thur Dec 2021	Online Course	An Introduction to the American Chestnut
January 6	Webinar	Forest Biodiversity and Species Shifts. Science and Practice: Forest Climate Change in ME Series.
January 13	Webinar	Woodland Owner Webinar Series: Farms and Forests
January 21	Webinar	Fire and a Changing Climate – Fueling Collaboration Panel Discussion Series, #3
Jan 25 - Mar 15	Online Training	Adaptation Planning and Practices Training
February 18	Webinar	Timber Management and Prescribed Fire – Fueling Collaboration Panel Series, #4
Mar 30-Apr 1	Online Summit	Northwest Innovative Forestry Summit
June 9 - 12	Luxembourg	ProSilva 30th anniversary meeting in Luxembourg (postponed from Oct 2020).
Aug 19 - 22	Asheville, NC	Celebrating the roots of Guild forestry - 25th anniversary celebration!
September 18	Centerville, PA	Loving the Land Through Working Forests Conference

Welcome New Members

Professional members

Sarah Billig, Mendocino and Humboldt Redwood Companies	Lakeport, CA
Amanda Locke, NYC Department of Environmental Protection	New Milford, CT
Jim Manolis, The Nature Conservancy	Minneapolis, MN
Andrew Norman, U.S. Forest Service and National Park Service	Jackson, WY

Affiliate members

Eli Sagor, U of MN Sustainable Forestry Education Cooperative	Cloque, MN
Lee Sanders	Ragland, AL

Student members

William Casola, North Carolina State University	Apex, NC
Jacob LaDue, University of Vermont	Pittsford, NY
Connor McCourt, University of Vermont	Colchester, CT
Madeline Oberempt, University of Vermont	Burlington, VT
Eliza Orne, University of Vermont	Burlington, VT
Lucas Rousseau, University Of Vermont	South Bend, IN
Alex Vokey, University of Vermont	Rockport, ME

Stewards Circle Donors

Mark Ashton	New Haven, CT
Bill Bradley	Atlanta, GA
Peter Evans	Albuquerque, NM
Kathleen Holian	Glorieta, NM
Meghan Mullee	San Diego, CA
Ken Smith	Sewanee, TN
Peter Van Der Goes, Jr. (tribute to David Van Der Goes)	New York, NY

Thank you to all of our [Stewards Circle donors](#) for supporting the Guild's work! Stewards Circle donors and their regular support makes a huge difference!

Organizational Sponsors

Thank you to our [organizational sponsors](#)! Your support is essential to fulfilling our mission of putting the forest first.





How to help

Membership: Please be sure your membership is always up to date. We can help with [renewals](#) or status checks, and you can also view your membership status online by logging into your membership portal if you've set that up. [Renew today](#) through next June if you haven't already. Email membership@forestguild.org with questions. We welcome professional and affiliate [members](#) who advance the stewardship of forests. If you have a gift membership, or are not a member, please [join today!](#)

Donations are always welcome (and needed): [Donations](#) of any amount at any time transform into direct positive impact in our forests. As always, you can become an [organizational sponsor](#) or join our [Stewards Circle](#) today to help us with the "heavy lifting" of new projects and innovative support for forest stewards.

During giving seasons: You can also support the Forest Stewards Guild by shopping on [Amazon Smile](#) for any holiday gifts you cannot buy locally. And, share our [GuideStar Profile](#) with anyone looking for an upstanding charity.

Notes

Thank you for your membership renewals for the 2020-2021 membership year, and for year-end donations! Your support is what makes what we do possible.

COVID-19 Impacts on the Forest Sector: 2020 and Beyond. A new report from Dovetail Partners provides a hopeful perspective: "Throughout the COVID-19 pandemic the forest sector has been recognized as essential. As a result, there is some increased awareness by consumers, policy makers and businesses of the importance of the sector for society's health and resiliency. The forest sector can respond to the impacts of the pandemic in constructive and innovative ways. Through these actions, the forest sector can become a bright light in challenging times and ensure the world is more resilient, secure, and better prepared."

RVCC's annual policy meeting announcement. Join the Rural Voices for Conservation Coalition's 17th Annual Meeting this January. RVCC engages a diverse network of community leaders across the West to advance policy solutions and promote peer learning that aligns public and private land stewardship with community benefit. This year, RVCC is going virtual, hosting two panel events in January 2021 about: 'Learning From a Year of Crises' and 'Policy and Governance in the Year Ahead'. You can find out more about their 17th Annual Meeting, their panel events, and to RSVP on their website.

If you have notes to share with our readers, please send them to membership@forestguild.org.

Publications and Research

Warmer and Drier Fire Seasons Contribute to Increases in Area Burned at High Severity. Parks et al. 2020. Warmer and Drier Fire Seasons Contribute to Increases in Area Burned at High Severity in Western US Forests From 1985 to 2017, Geophysical Research Letters.

Repeated prescribed fire in thinned ponderosa pine increases growth and resistance to other disturbances. Westlind and Kerns. 2020. Repeated fall prescribed fire in previously thinned Pinus ponderosa increases growth and resistance to other disturbances. Forest Ecology and Management.

The economic costs of planting, preserving, and managing the world's forests to mitigate climate change. Austin, K.G., Baker, J.S., Sohngen, B.L. et al. The economic costs of planting, preserving, and managing the world's forests to mitigate climate change. Nat Commun 11, 5946 (2020).

Do non-native plants contribute to insect declines? The impact of introduced plants on native biodiversity has emerged as a hot-button issue in ecology. But recent research provides new evidence that the displacement of native plant communities is a key cause of a collapse in insect populations and is affecting birds as well.

Jobs

Be sure to check out the [job opportunities](#) in forest stewardship on the Forest Stewards Guild webpage. They include a [Senior Firefighter](#) with the Guild in Colorado, an [Environmental Lands Management Technician](#) in Florida, a [Georgia Sentinel Landscape Pilot Project Coordinator](#), a [Forester](#) in Massachusetts, [Directorate Fellows](#) with USFWS, a [Graduate Research Assistantship](#) at Mississippi State, a [North Carolina Regional Staff Forester](#), a [Forest Program Associate with Audubon](#) in Pennsylvania, a [Ph.D. Research Assistanship](#) in North Carolina and many, many more!

Forest Stewards Guild - <http://foreststewardsguild.org> - 505-983-8992 - membership@forestguild.org

This email was sent to colleen@forestguild.org. If you are having trouble viewing this email, you may [also view it online](#). To opt out of all communications, [click here](#).

[Forward email.](#)

