

# Cibola CWPP Core Team Meeting

June 11th 2020, 1:00 PM to 2:00 or 2:30 PM, Zoom, USA

The focus of this meeting is draft revisions.

Is there anything specifically that we should make room on the agenda for?

## Agenda:

1. Welcome & Introductions
2. Introduction
3. Overview of CWPP Draft
4. Collaboration and Plan Process Overview
5. Priority Actions Review
6. Wrap up and Next Steps

<https://foreststewardsguild.org/cibola-cwpp/>



# Introduction

This CWPP is plan for action!

Some pieces can be accomplished by individuals, but we highly encourage you to continue to meet as a Core Team or form smaller task groups to take on specific Priority Actions.



# Next Steps

1. Integrate Revisions and Finalize Document
2. Signatures of Approval from all stakeholders
3. Seek approval from Cibola County Commission
4. Submit Final Plan to New Mexico Planning Task Force

<https://foreststewardsguild.org/cibola-cwpp/>

# Cibola CWPP Overview

## Contents of this Update:

- Previous Planning – 2006 CWPP
- CWPP Implementation
- Wildfire Preparedness
- Planning for Post Fire
- Collaboration
- Accomplishments
- Mapping
  - WUI and CARs
  - Fire Hazard



A misty forest scene with tall, thin trees and a path leading into the distance. The image is faded and serves as a background for the text.

# CWPP Implementation

- CWPP Priority Actions
- Priority Fuel Treatments
- Locally Specific Priority Actions

# Wildfire Preparedness

- Fire Adapted Communities
- Fire Adapted Communities New Mexico Learning Network
- Firewise Communities
- Defensible Space and Home Hardening
  - Assessments
  - Structure Hardening
  - Defensible Space Zones
- Ingress and Egress/ Roads
- Human Sources of Ignition
  - Campfires
  - Power Lines
  - Evacuation
- Smoke Impacts
  - Personal Smoke Mitigations
  - Community Smoke Mitigations
- Communication
  - Emergency Notifications
  - Communication for First Responders
  - Community Emergency Response Team





# Planning for Post Fire

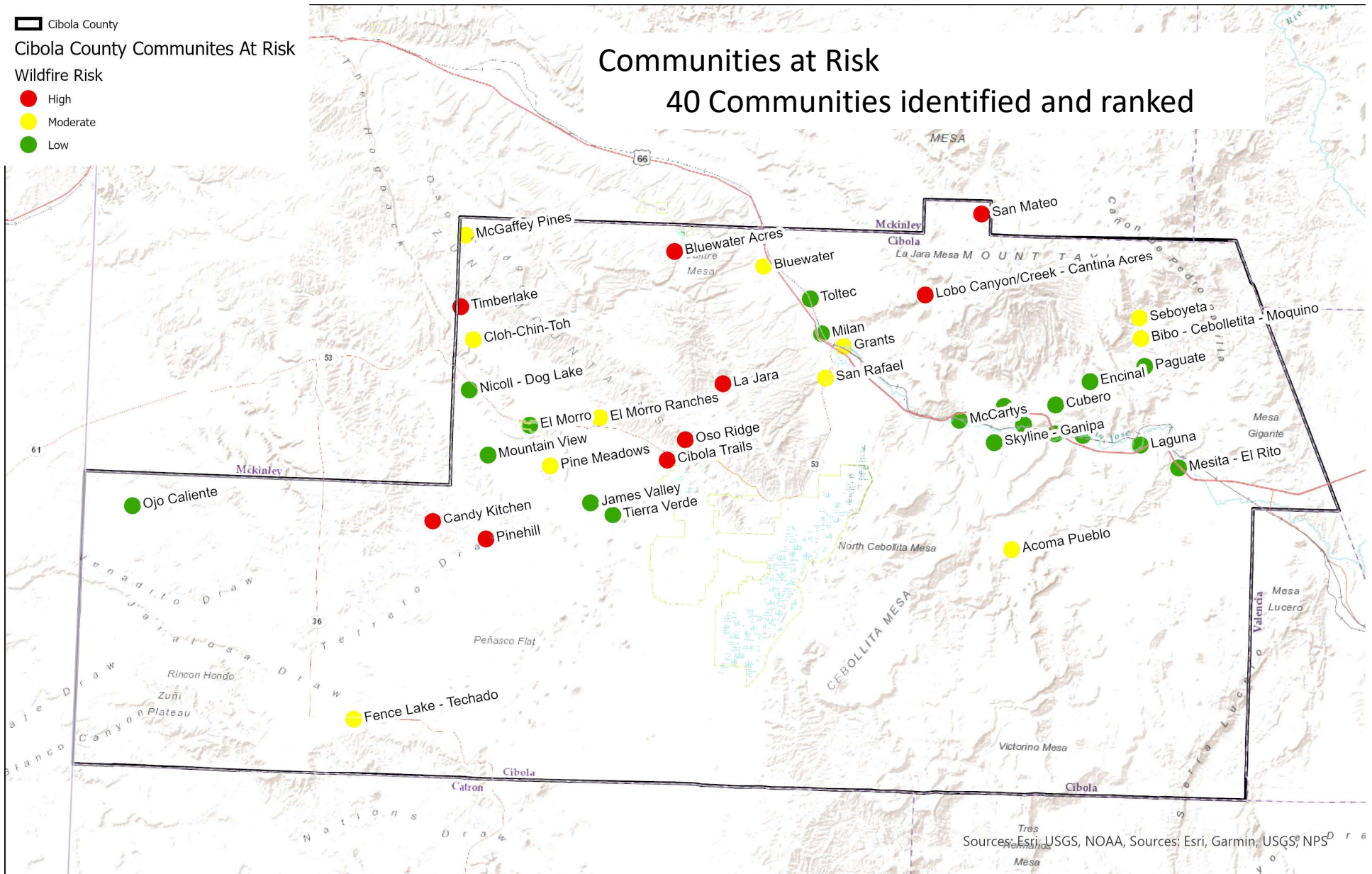
- Immediate Post Fire Safety
- Flooding and Erosion
- NM After Wildfire Guide

A background image of a misty forest with tall, thin trees and a path leading into the distance. The image is faded to allow text to be overlaid.

# Mapping

- New Products:
  - Communities at Risk
  - WUI
  - Wildfire Hazard
- Map Viewer







## Cibola County Community Wildfire Protection Plan 2020

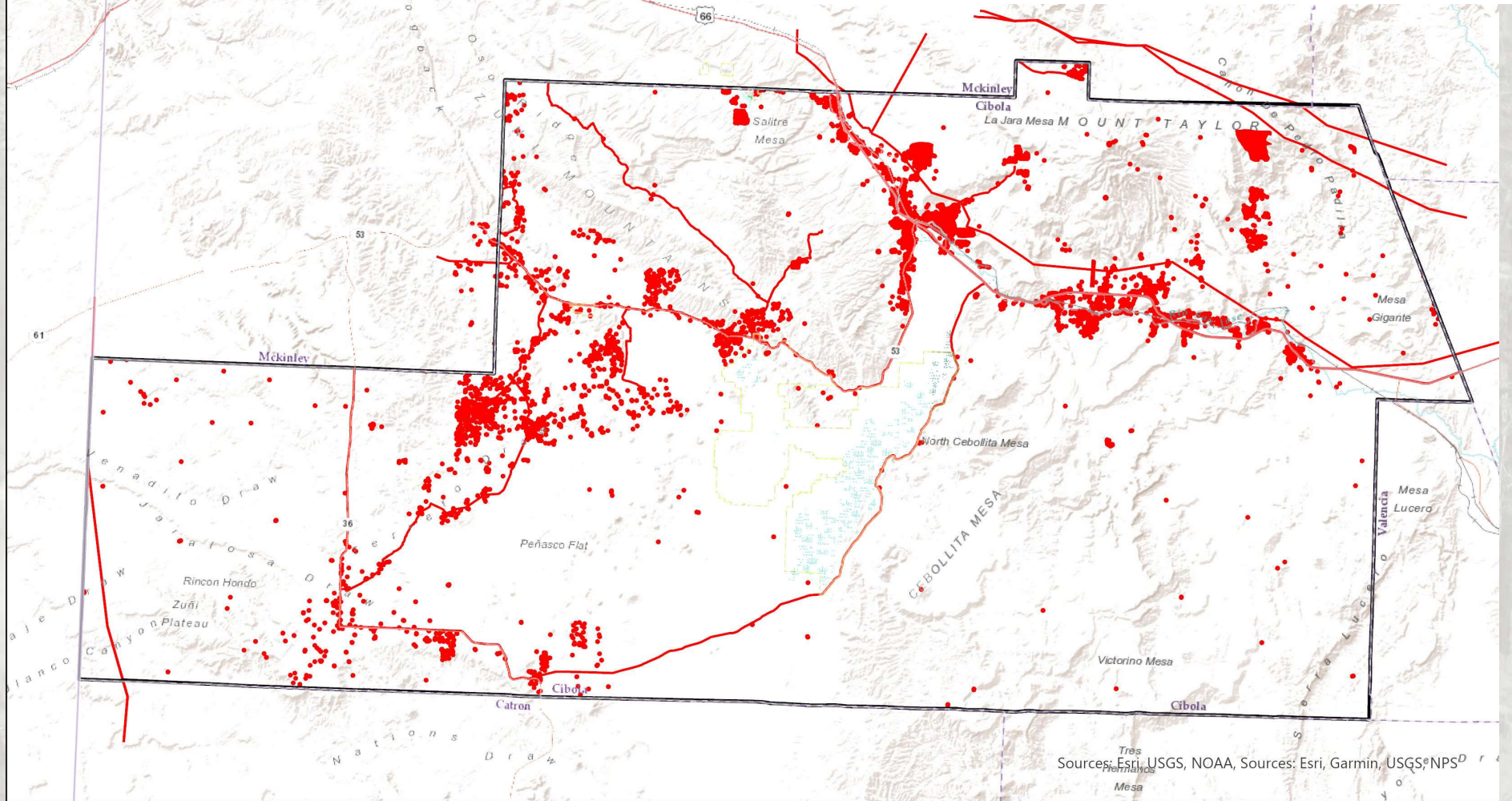
### Communities at Risk



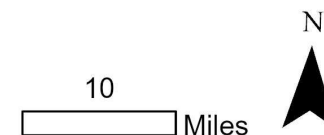
 Cibola County  
 WUI

WUI

Refined from county wide coverage to values-based assessment



## Cibola County Community Wildfire Protection Plan 2020 Wildland Urban Interface



Forest Stewards  
**Guild**  
 putting the forest first



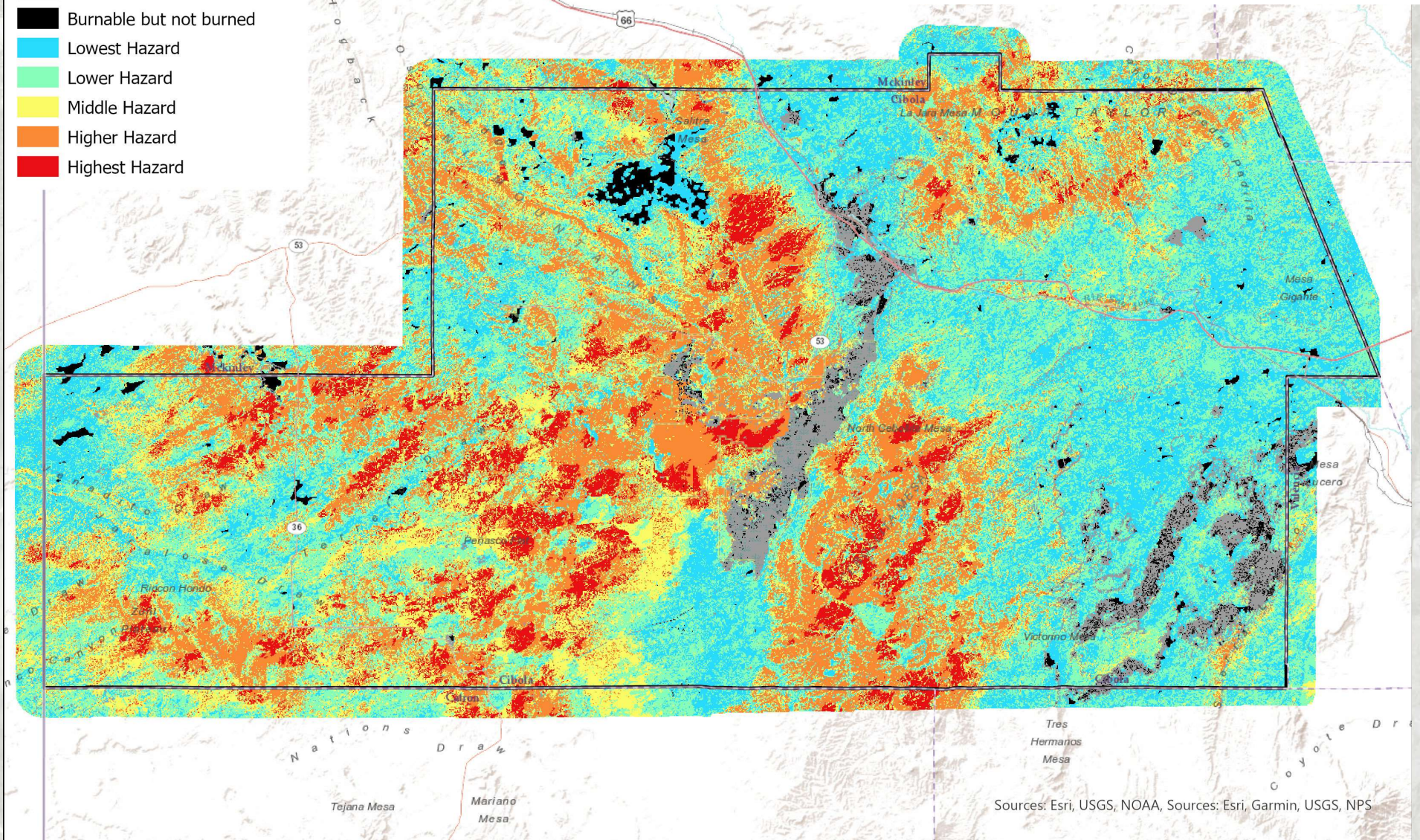
Cibola County

## Integrated Fire Hazard

- Non-burnable
- Burnable but not burned
- Lowest Hazard
- Lower Hazard
- Middle Hazard
- Higher Hazard
- Highest Hazard

## Wildfire Hazard

Combination of Modeled Probability and Intensity



Sources: Esri, USGS, NOAA, Sources: Esri, Garmin, USGS, NPS

## Cibola County Community Wildfire Protection Plan 2020

### Integrated Fire Hazard

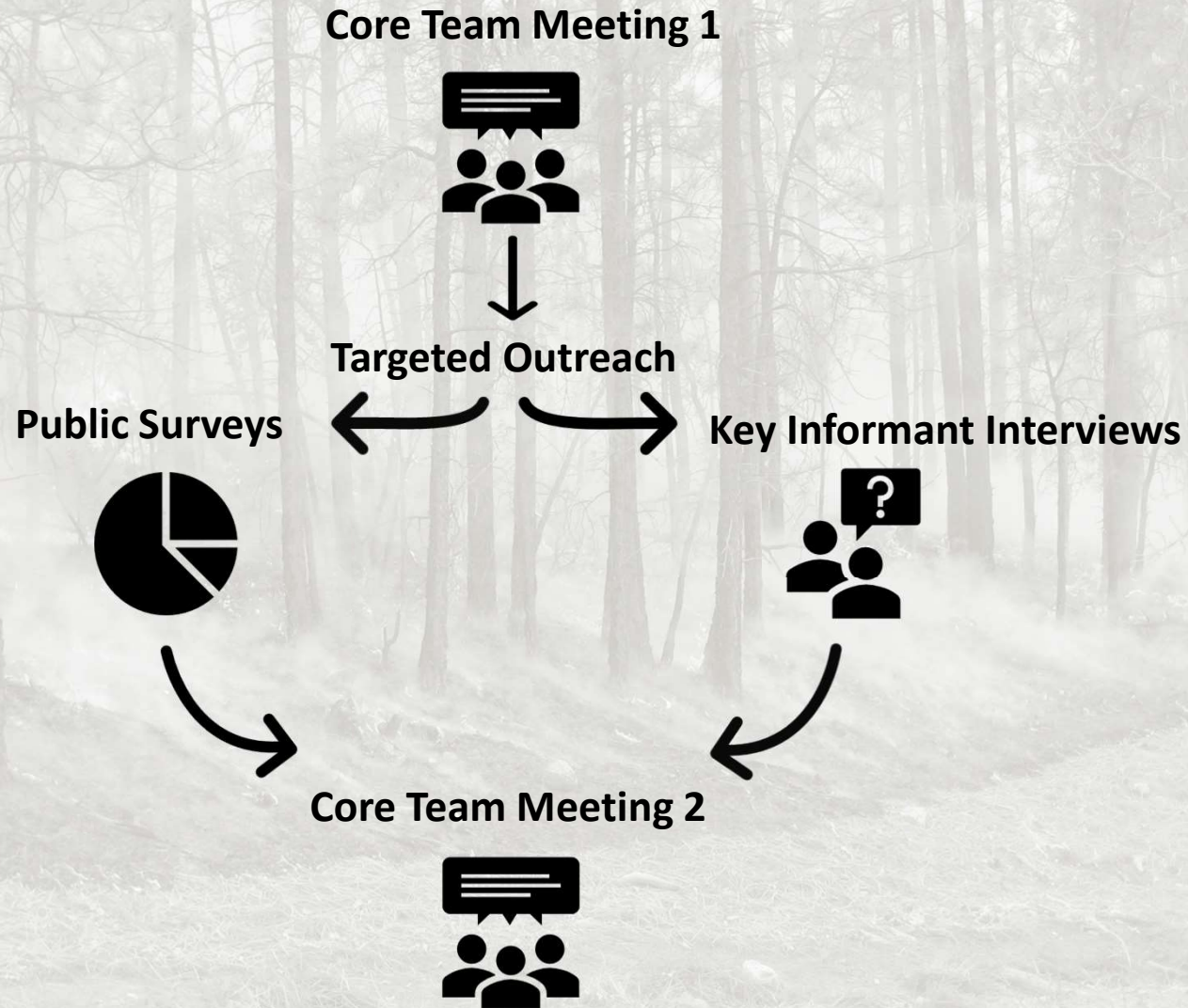


A misty forest scene with tall, thin trees and a path leading into the distance. The text "Collaboration Overview" is overlaid in the center.

# **Collaboration Overview**



# Collaboration Process



# Key Informant Interviews

- Conducted over-the-phone interviews with 9 core team members
- Interviewees were chosen to represent a wide range of organizations, agencies, and tribal governments across Cibola County
- Interview data was directly input to priority action table and locally specific priority actions



# Key Informant Interviews

Organization	Title
Cibola County	Planning Coordinator/ GIS
Cibola County Office of Fire and Emergency Management	County Fire Marshal/ Emergency Manager
BIA Fire	Fire Prevention Specialist
BIA Fire Management - Ramah	Navajo BIA - Ramah
El Malpais National Monument	Fire Management Officer
Laguna Pueblo	Natural Resource Manager
Acoma Pueblo	Tribal Forester
Mt. Taylor Ranger District Cibola NF	Fire Management Officer
Zuni Forestry/ Fire	Forest and Fire Management Officer
BLM	Fire Management Officer

# Interview Question Topics

## **Priority Actions**

- What actions need to be taken to make your county prepared for wildfire?
- 10 topic areas (e.g. communication, fuels treatments, etc.)
- Geographic areas of concern?
  - High wildfire risk
  - High priority for action

## **Accomplishments/ Current Efforts**

- Fuels treatments
- Suppression capabilities
- Community support

**Does the interviewee have other plans related to wildfire that they can share with us?**



# Public Surveys

- Survey was available on FSG website and outreach included:
  - Advertisement in the Cibola Citizen
  - Community Facebook pages
  - Cibola County website
  - Community meetings
  - Bulletin boards
  - Word-of-mouth from Core Team to Cibola community members
- 23 full-time residents responded from 5 communities
  - Timberlake
  - Fence lake
  - High Country Ranch
  - Ramah
  - Candy Kitchen

# Perceived Risks to Wildfire: Ranked

## *1. Life:*

- Personal safety and safety of family members
- Loss of life
- Damage to water supply or watershed
- Disruption of livestock or agriculture

## *2. Property:*

- Damage to home
- Decreased property value
- Loss of insurability

## *3. Community:*

- Post-fire erosion
- Smoke impacts
- Loss of recreational activities
- Economic disruption



# Wildfire Mitigation Priorities

1. Reduction of hazardous fuels
2. Evacuation routes
3. Defensible space
4. Homeowner education
5. Increasing VFC capacity
6. Emergency notification systems
7. Post-fire recovery

# Vegetation Management Preferences

Residents ranked various methods of reducing vegetative fuel loads as follows:

<u>First</u>  Cutting and chipping hazardous fuels within the community	<u>Second</u>  Cutting and chipping hazardous fuels on public or private lands adjacent to the community
<u>Third</u>  Using prescribed burns on their property	<u>Fourth</u>  Using Prescribed burns on public or private property adjacent to the community



# Constraints to Wildfire Risk Reduction

1. Financial costs
2. Time constraints
3. Neighboring properties not taking action, therefore reducing effectiveness of actions taken on property
4. Lack of information regarding the removal of slash and hazardous fuels
5. Difficulty finding a contractor to complete work
6. Belief that actions will not be effective in reducing risk to property
7. Lack of awareness of wildfire risk
8. Do not want to change the aesthetics of property
9. Restrictions on cutting trees

# CWPP Implementation Action Items

This section is the heart of the CWPP and what we will spend the bulk of the meeting reviewing.

- CWPP Priority Actions
  - Community Involvement
  - Reducing Structural Ignitability
  - First Responders and Equipment
  - Evacuation Planning
  - Communication
  - Water Resource Protection
- Priority Fuel Treatments
- Locally Specific Priority Actions



# Priority Actions

## Community Involvement

<b>Priority Level</b>	<b>Action and Detail</b>
<b>High</b>	<b>Formalize the CWPP group or create a new group that will focus on implementing CWPP priority actions.</b>
<b>High</b>	<b>Link leaders working towards wildfire adaptation with the Fire Adapted Communities New Mexico Learning Network.</b>
<b>High</b>	<b>Hire a Wildland Urban Interface Specialist for the County.</b>
<b>High</b>	<b>Develop a strategy for targeted outreach and education of wildfire preparedness and prevention to all citizens of Cibola County.</b>
	<b>Work with the USFS to implement projects next to large areas of private land and key communities.</b>
	<b>Reduce the number of human caused wildfire ignitions from refuse burning and abandoned campfires.</b>
	<b>Work with New Mexico State Forestry to establish Firewise communities in Cibola County</b>
	<b>Promote implementation, education, and training about prescribed fire.</b>

# Priority Actions

## Reducing Structural Ignitability

Priority Level	Action and Detail
High	Defensible space thinning on private property is a high priority across the county. Pursue funding for defensible space and general thinning projects on private lands in the County.
High	Conduct home hazard assessments of resident's property.
	Develop brush disposal sites.
	Consider adopting county codes and ordinances that address wildfire risk .
	Promote accurate signage of addresses to aid in firefighter response.
	Pursue cost share programs to upgrade residential home building materials such as roofing, siding, and deck materials.



# Priority Actions

## First Responders and Equipment

<b>Priority Level</b>	<b>Action and Detail</b>
<b>High</b>	<b>Host a pre and post wildfire season coordination meeting for all agencies that are responsible for responding to wildfire.</b>
<b>High</b>	<b>Cross-training area fire departments and local government officials with state and federal agencies.</b>
<b>High</b>	<b>Work on Recruitment to Volunteer Fire Departments to improve their firefighting capacity.</b>
<b>High</b>	<b>Ensure that every fire department has equipment to respond to wildfires including at least one type 6 engine and a water tender.</b>
	<b>Implement an improved and more regular stipend program to incentivize Volunteer Fire Department (VFD) participation in trainings.</b>
	<b>Expand wildland firefighting capability of all wildland fire responders in the County by adding equipment.</b>
	<b>Identify community liaisons who can relay relevant information between emergency personnel and residents in the event of a wildfire or other emergency.</b>
	<b>Review and update mutual aid agreements with neighboring counties and state and federal jurisdictions.</b>

# Priority Actions

## Evacuation Planning

<b>Priority Level</b>	<b>Action and Detail</b>
<b>High</b>	<b>Promote the Code Red Reverse 911 system</b>
<b>High</b>	<b>Work with communities and fire districts to develop evacuation plans.</b>
<b>High</b>	<b>Establish safety zones and/or evacuation staging areas for each fire district or community.</b>
<b>High</b>	<b>Involve the County Sherriff's Department, State Police, and other co-operators in reviewing and updating current All Hazard Plan and conducting field exercises.</b>
	<b>Support evacuation drills.</b>
	<b>Thin vegetation along roadways and at intersections and maintain previous treatments to allow for evacuation during a wildfire.</b>



# Priority Actions Communications

<b>Priority Level</b>	<b>Action and Detail</b>
<b>High</b>	<b>Improve radio communications and remove dead zones.</b>
<b>High</b>	<b>Improve cellular communications and remove cellular dead zones.</b>

## Water Resource Protection

<b>Priority Level</b>	<b>Action and Detail</b>
<b>High</b>	<b>Identify high priority watersheds and water sources that are risk of post fire impacts and work collaboratively to reduce fire risk.</b>
	<b>Document the location of community water infrastructure including wells and water tanks.</b>
	<b>Support projects to develop new water resources/enhance existing water resources.</b>

# Priority Fuel Projects 1/2

<b>Fuel Reduction Thinning</b>	Along the westside of Bluewater acres subdivision and within Bluewater subdivision
	Oso Ridge and Cibola Trails subdivisions.
	Salt Cedar along Rio San Jose.
	Along I-40 corridor, Thoreau, west of Grants, running into checkerboard area in the Southwest corner of the county to Ft. Wingate
	Treatments around schools and infrastructure near Thoreau, Ft. Wingate, and other communities through the checkerboard area in the Southwest corner of the county.
	Along the Northwest area of the Cubero district
	The community of McGaffey Pines subdivision.
	The communities of Pinehaven and Bread Springs
	The community of Pine Meadows
	Along County Rd. 42
	The Whites project on Ramah Navajo land using mechanical and pile burning.
	WUI thinning surrounding Pueblo of Acoma.
	WUI areas of Timberlake and El Morro ranches.
	Paguate and Encinal canyons to protect water resources for the Pueblo of Laguna.
	WUI areas around La Jara and within La Jara subdivisions
	WUI and defensible space around Lobo Canyon and Lobo Camp communities.
	Along roads in High Country Ranch and Mujeres Ranch.
	Along Water Canyon to protect from the effects of high severity wildfire.
	El Malpais National Conservation Area, BLM
	Within and adjacent to the community of Candy Kitchen



# Priority Fuel Projects 2/2

<b>Thinning and Prescribed Fire</b>	Along the boundary of private and Forest Service land along Oso ridge, El Morro, and Timberlake Areas.
	El Malpais National Conservation Area, BLM
	Within and adjacent to the community of Candy Kitchen
<b>Fuel Breaks and Safety Zones</b>	Fuel break along the Southwest side of El Morro Ranches and thinning along roads
	Fuel break and safety zones in and adjacent to the high-risk the community of Candy Kitchen
<b>Pile Burning</b>	Between mile marker 25 and 28 on highway 36 in Fence Lake community
	The Cerro Alto project on Ramah Navajo land.
	BLM managed areas including, Chain of Craters, El Malpais NCA, Highway 53 Picnic Area and adjacent to Candy Kitchen
<b>Managed Wildfire and Landscape Prescribed Fire</b>	El Malpais National Monument
	El Malpais National Conservation Area, BLM
	Cibola National Forest
<b>Defensible space</b>	Lobo Creek and Lobo Canyon
	Timberlake
	Candy Kitchen
	El Moro Ranches
	Bluewater Village
	La Jara Subdivision



# Locally Specific Priority Actions

- Create East/West egress from Forest Road 157.
- Improve BIA and New Mexico State Fire response times to Pueblo of Laguna.
- Educate Pueblo of Laguna and Pueblo of Acoma residents about emergency notification systems.
- Work with Navajo Nation to create evacuation plans that are specific to Navajo chapter houses in Cibola County.
- Evaluate restrictive covenants that may impede wildfire risk reduction in Fencelake subdivisions, Candy Kitchen, Indian Knolls, and Shadow Canyon.
- Manage naturally ignited wildfire for resource benefit across the Zuni Mountains landscape on Forest Service land.
- Manage naturally ignited wildfire for resource benefit El Malpais NCA BLM, Candy Kitchen.
- Provide the training needed to red-card wildland firefighters in Navajo communities.
- Provide training in Pueblo of Acoma and Pueblo of Laguna to improve wildland firefighting capacity.
- Connect with and educate the volunteer fire department and the homeowners association of El Morro Ranches about Firewise.
- Connect with and educate the Fence Lake community about wildfire preparedness and home hardening.
- Conduct evacuation drills for the El Morro Ranches area.
- Create an evacuation plan for the Candy Kitchen Community.



September	October	November	December
Finalize Agreements	Gather Background Information Build Core Team list	1 <sup>st</sup> Core Team Meeting: overview of CWPP update process, progress made since 2006, and to gather input from community members about priorities	Work on first draft of CWPP update GIS Analysis Outreach to Core Team
Conference Call with COG, County Staff and FSG		Core Team Survey & Questions, Resident survey, publicize CWPP	Begin compiling accomplishments, updated priorities, and relevant changes since 2006 CWPP
January	February	March	April
Work on CWPP Draft	Work on CWPP Draft	Work on CWPP Draft	Work on CWPP Draft
Public Meeting	Core Team meeting to review CWPP Progress		
May	June	July	August
First draft submitted to core team for review	Final core team meeting to finalize CWPP update	Present CWPP to County Commission	Submit signed CWPP update to NM State Forestry
	Submit CWPP update for signatures		

# CWPP update guidelines

## Process

1. Review existing CWPP
2. Host collaborative meetings
3. Update maps
4. Reflect changes in risk ratings
5. Develop updated priorities
6. Distribute CWPP update drafts to key stakeholders
7. Submit the final document to local government body, local fire department, and state Forestry for signatures and endorsement
8. Submit signed and endorsed plan to NM State Forestry no later than 9/1/20

## Plan Requirements

1. Collaboration
2. Prioritized fuel reduction
3. Recommendations to reduce structural ignitability
4. Signatures from:
  1. Applicable local government
  2. Local fire department
  3. NM State Forestry
5. Describe progress made and list accomplishments since last CWPP was adopted
6. Changes in community risk ratings (High, Medium, Low)
7. List of CARs and each hazard risk rating
8. Map of WUI with risk ratings
9. **List of new prioritized projects**



# Next Steps

1. Integrate Revisions and Finalize Document
2. Signatures of Approval from all stakeholders
3. Seek approval from Cibola County Commission
4. Submit Final Plan to New Mexico Planning Task Force

<https://foreststewardsguild.org/cibola-cwpp/>

## The Network

### MEMBER DIRECTORY

#### FACNM LEADERS

#### CONTACT US

## FAC NM members are the Network.

By joining the network as a member, you will have access to the knowledge and resources of professionals and WUI residents from around the state. You can search the FAC NM member directory by location if you are looking for help where you live, or search for a professional who may have the specified knowledge to help you apply for a grant to create defensible space on your property.

Everyone starts as a FAC member. For those looking to take-on a leadership role within the Network, we have the **FAC Leader** program.

- **To Join the Directory click the ADD button. Create your account and fill in the information.**
- **Click the Connect button on someone's profile to contact that FACNM Member via email.**





# Contact

Sam Berry

[sam@forestguild.org](mailto:sam@forestguild.org)

541 816 6371

Gabe Kohler

[gabe@forestguild.org](mailto:gabe@forestguild.org)