

Cibola CWPP Core Team Meeting

February 26th 2020, Grants, NM

Agenda:

1. Welcome & Introductions
2. Review Communities at Risk and WUI map
3. Priority Fuel Reduction Treatments
4. Priority Actions
5. Review timeline & CWPP update guidelines
6. Wrap up and Next Steps

Wildland Urban Interface Designation

- Previous plan designated entire county
- Inclusive WUI approach
 - Designate areas that need special consideration when planning projects
- Buffer critical infrastructure
 - Layers
 - 911 address layer – visually inspected and compared to other data sources
 - Pueblo and Tribal data
 - Cibola County data
 - Microsoft Structure layer – visually inspected
 - Cibola County Communication points
- What to add?
 - Evacuation Routes
 - Powerlines
 - Rail Roads
 - Missed communities or infrastructure?

Communities at Risk

- Identify risk ratings for specific communities (Low, Moderate, High)
- Prioritize geographically specific actions
- Basis
 - Named Places data, Cibola County Data, Visual inspection
 - 2006 plan identified places
- Group areas that are geographically close and at similar risk level
- Risk Ratings based on
 - Feedback from Core Team and public
 - Wildfire Hazard Mapping
- Feedback on if CARS make geographic sense
- Are risk ratings appropriate?

2006 Ratings

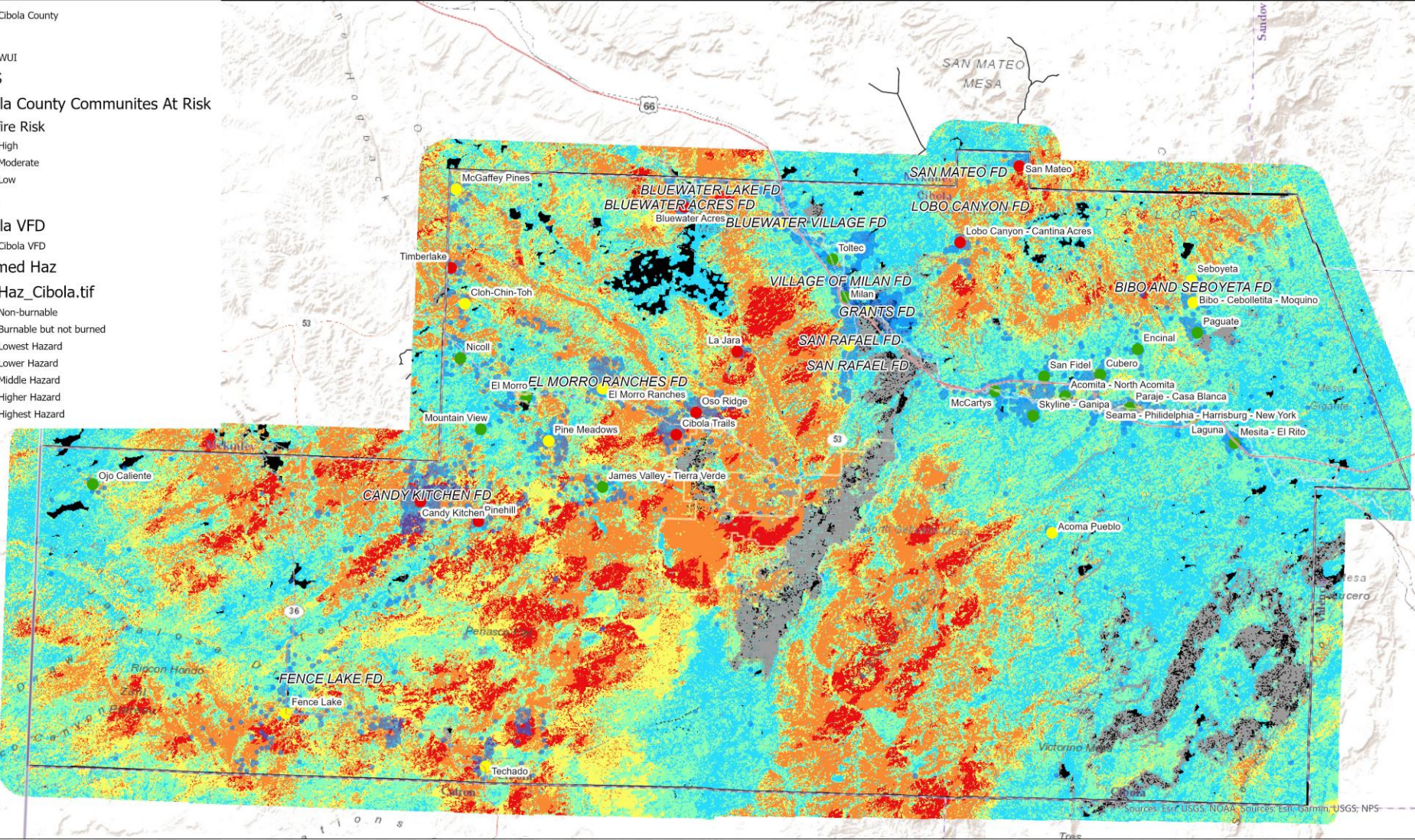
	Previous Rating	2020 Rating
Bluewater	Moderate	
Bluewater Acres	Moderate	
Candy Kitchen	Moderate	
Crestview/Twin Buttes/ Crested Butte	Moderate	
Lobo Canyon	Moderate	
Morrow	Low	
Milan	Low	
San Mateo	Low	

Cibola County Community Wildfire Protection Plan
DRAFT Communities at Risk and Wildland Urban Interface

Date Exported: 10 Miles



- Cibola County
- WUI
- CARS
- Cibola County Communities At Risk
- Wildfire Risk
 - High
 - Moderate
 - Low
- VFDs
- Cibola VFD
- Trimmed Haz
- Int_Haz_Cibola.tif
 - Non-burnable
 - Burnable but not burned
 - Lowest Hazard
 - Lower Hazard
 - Middle Hazard
 - Higher Hazard
 - Highest Hazard



<https://foreststewards.maps.arcgis.com/apps/webappviewer/index.html?id=33057e62491341158f747e748c8dcee9>

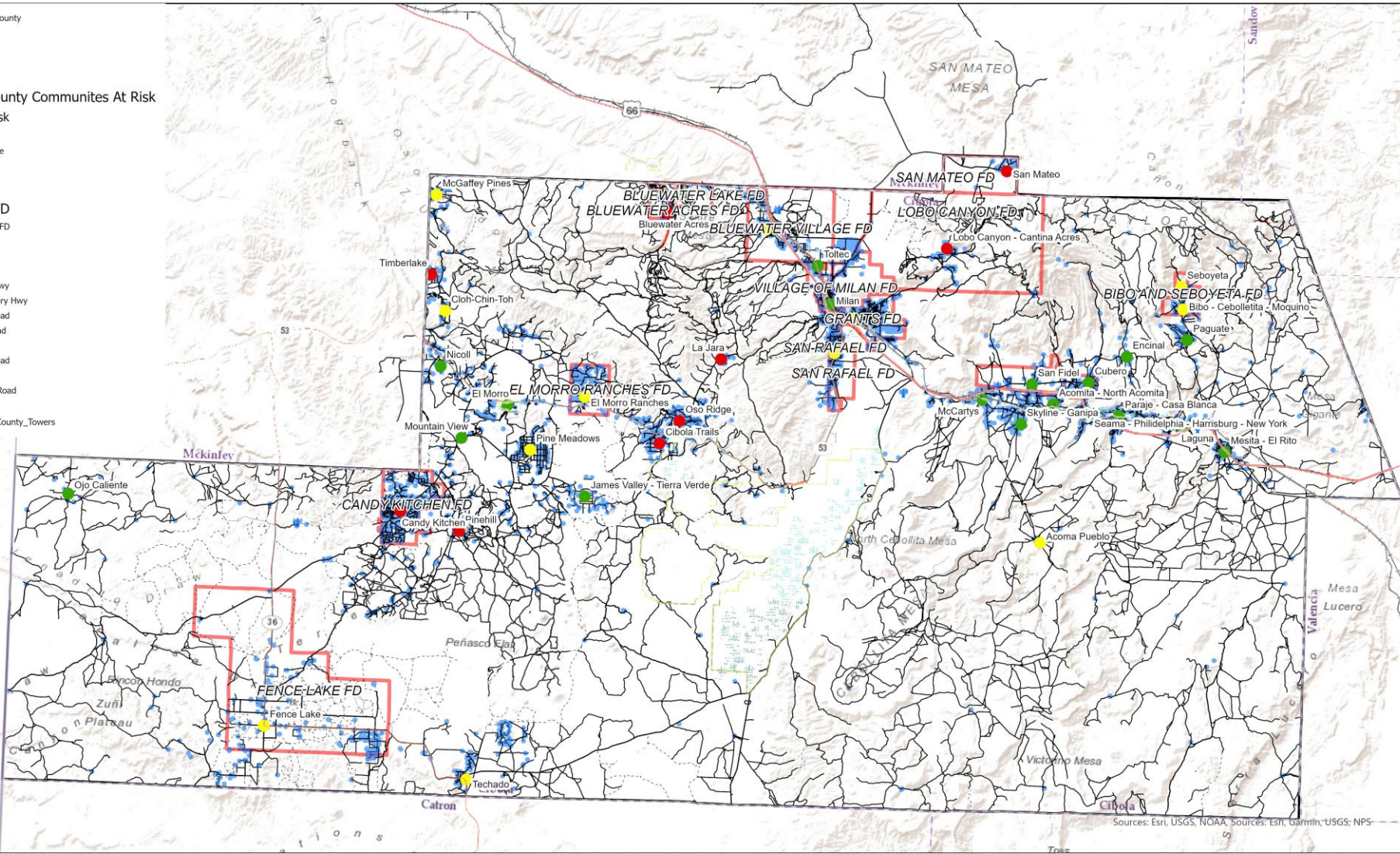
Cibola County Community Wildfire Protection Plan

DRAFT Communities at Risk and Wildland Urban Interface

Date Exported: 10 Miles



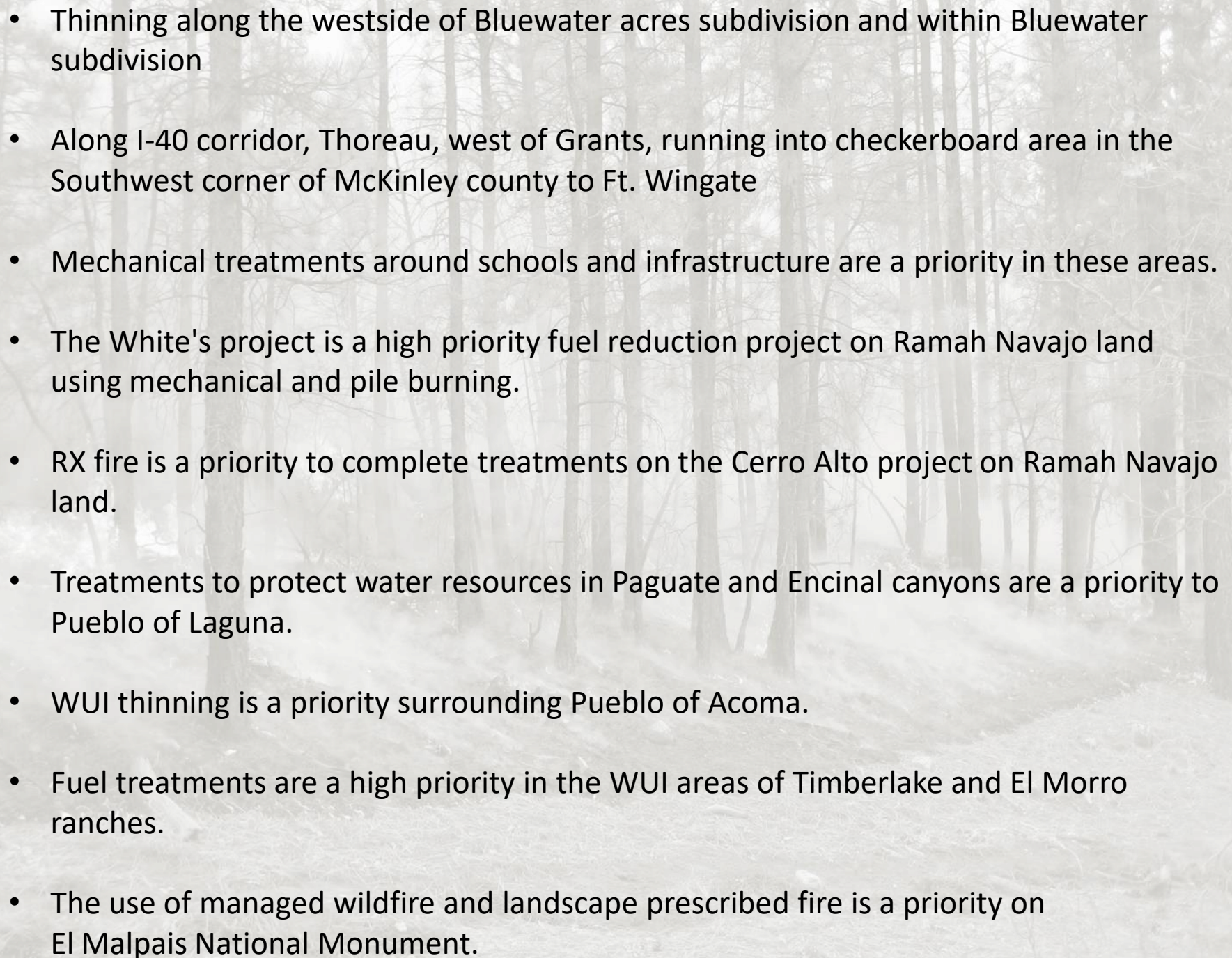
- Cibola County
- WUI
- CARS
- Cibola County Communities At Risk
- Wildfire Risk
 - High
 - Moderate
 - Low
- VFDs
- Cibola VFD
- CARS
- Roads
 - Major Hwy
 - Secondary Hwy
 - Local Road
 - 4wd Road
 - Ramp
 - Local Road
 - Alley
 - Private Road
 - Rail
- Cibola County Towers



Sources: Esri, USGS, NOAA, Sources: Esri, Garmin, USGS, NPS

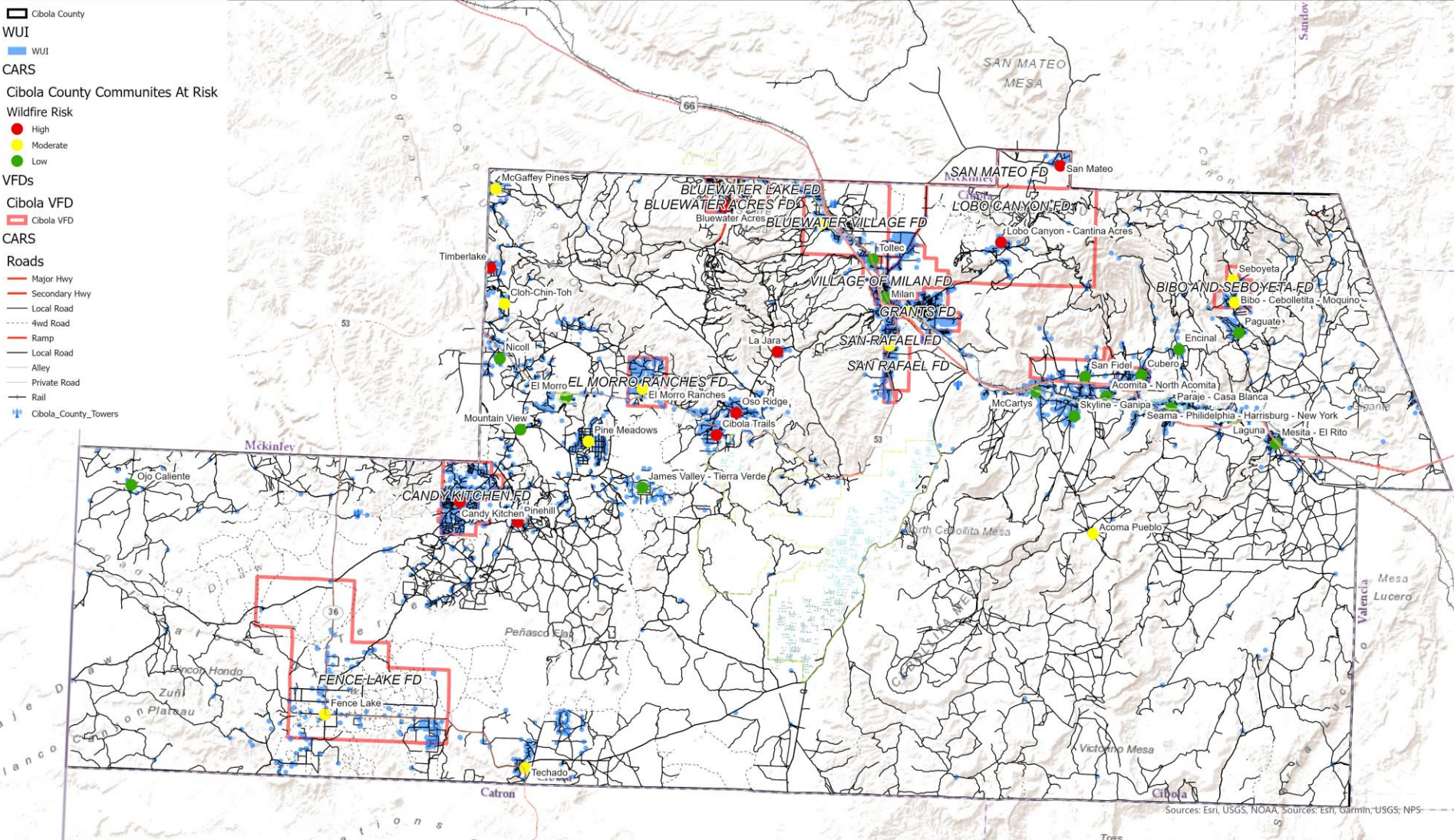
A misty forest scene with tall, thin trees and a path leading into the distance. The text "Priority Fuel Reduction Treatments" is overlaid in the center.

Priority Fuel Reduction Treatments

- 
- Thinning along the westside of Bluewater acres subdivision and within Bluewater subdivision
 - Along I-40 corridor, Thoreau, west of Grants, running into checkerboard area in the Southwest corner of McKinley county to Ft. Wingate
 - Mechanical treatments around schools and infrastructure are a priority in these areas.
 - The White's project is a high priority fuel reduction project on Ramah Navajo land using mechanical and pile burning.
 - RX fire is a priority to complete treatments on the Cerro Alto project on Ramah Navajo land.
 - Treatments to protect water resources in Paguete and Encinal canyons are a priority to Pueblo of Laguna.
 - WUI thinning is a priority surrounding Pueblo of Acoma.
 - Fuel treatments are a high priority in the WUI areas of Timberlake and El Morro ranches.
 - The use of managed wildfire and landscape prescribed fire is a priority on El Malpais National Monument.

Cibola County Community Wildfire Protection Plan

DRAFT Communities at Risk and Wildland Urban Interface



A misty forest scene with tall, thin trees and a path leading into the distance. The text "Priority Action Areas" is overlaid in the center.

Priority Action Areas

Priority Actions for 2020 and Beyond

Use handouts to list priorities

2020 Priority action topic areas:

1. Community involvement
2. Reducing structural ignitability
3. Fire responders and equipment
4. Evacuation Planning
5. Communication
6. Water Resource Protection

September	October	November	December
Finalize Agreements	Gather Background Information Build Core Team list	1 st Core Team Meeting: overview of CWPP update process, progress made since 2006, and to gather input from community members about priorities	Work on first draft of CWPP update GIS Analysis Outreach to Core Team
Conference Call with COG, County Staff and FSG		Core Team Survey & Questions, Resident survey, publicize CWPP	Begin compiling accomplishments, updated priorities, and relevant changes since 2006 CWPP
January	February	March	April
Work on CWPP Draft	Work on CWPP Draft	Work on CWPP Draft	First draft submitted to core team for review
Public Meeting	Core Team meeting to review CWPP Progress		
May	June		
Final core team meeting to finalize CWPP update	Present CWPP to County Commission		
Public meeting to review CWPP update draft.	Submit signed CWPP update to NM State Forestry		
Submit CWPP update for signatures			

CWPP update guidelines

Process

1. Review existing CWPP
2. Host collaborative meetings
3. Update maps
4. Reflect changes in risk ratings
5. Develop updated priorities
6. Distribute CWPP update drafts to key stakeholders
7. Submit the final document to local government body, local fire department, and state Forestry for signatures and endorsement
8. Submit signed and endorsed plan to NM State Forestry no later than 9/1/20

Plan Requirements

1. Collaboration
2. Prioritized fuel reduction
3. Recommendations to reduce structural ignitability
4. Signatures from:
 1. Applicable local government
 2. Local fire department
 3. NM State Forestry
5. Describe progress made and list accomplishments since last CWPP was adopted
6. Changes in community risk ratings (High, Medium, Low)
7. List of CARs and each hazard risk rating
8. Map of WUI with risk ratings
9. **List of new prioritized projects**

Next Steps

1. Continue gathering input from Core Team and Community
 1. Interviews
 2. Surveys
 3. Meetings
2. Continue to refine update materials
 1. Priority Actions
 2. Priority Projects
 3. WUI
 4. Communities at Risk

<https://foreststewardsguild.org/cibola-cwpp/>

The Network

MEMBER DIRECTORY

FACNM LEADERS

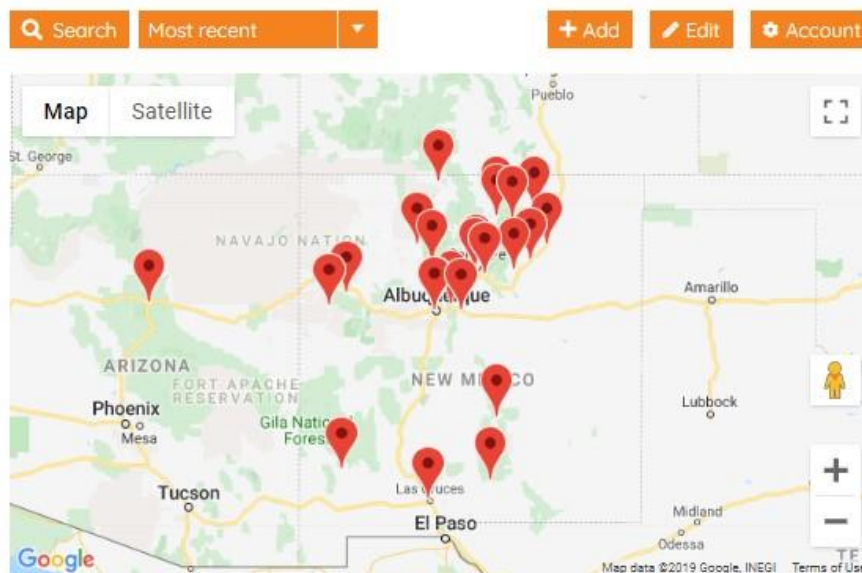
CONTACT US

FAC NM members are the Network.

By joining the network as a member, you will have access to the knowledge and resources of professionals and WUI residents from around the state. You can search the FAC NM member directory by location if you are looking for help where you live, or search for a professional who may have the specified knowledge to help you apply for a grant to create defensible space on your property.

Everyone starts as a FAC member. For those looking to take-on a leadership role within the Network, we have the **FAC Leader** program.

- **To Join the Directory click the ADD button. Create your account and fill in the information.**
- **Click the Connect button on someone's profile to contact that FACNM Member via email.**



Contact

Sam Berry

sam@forestguild.org

541 816 6371

Gabe Kohler

gabe@forestguild.org