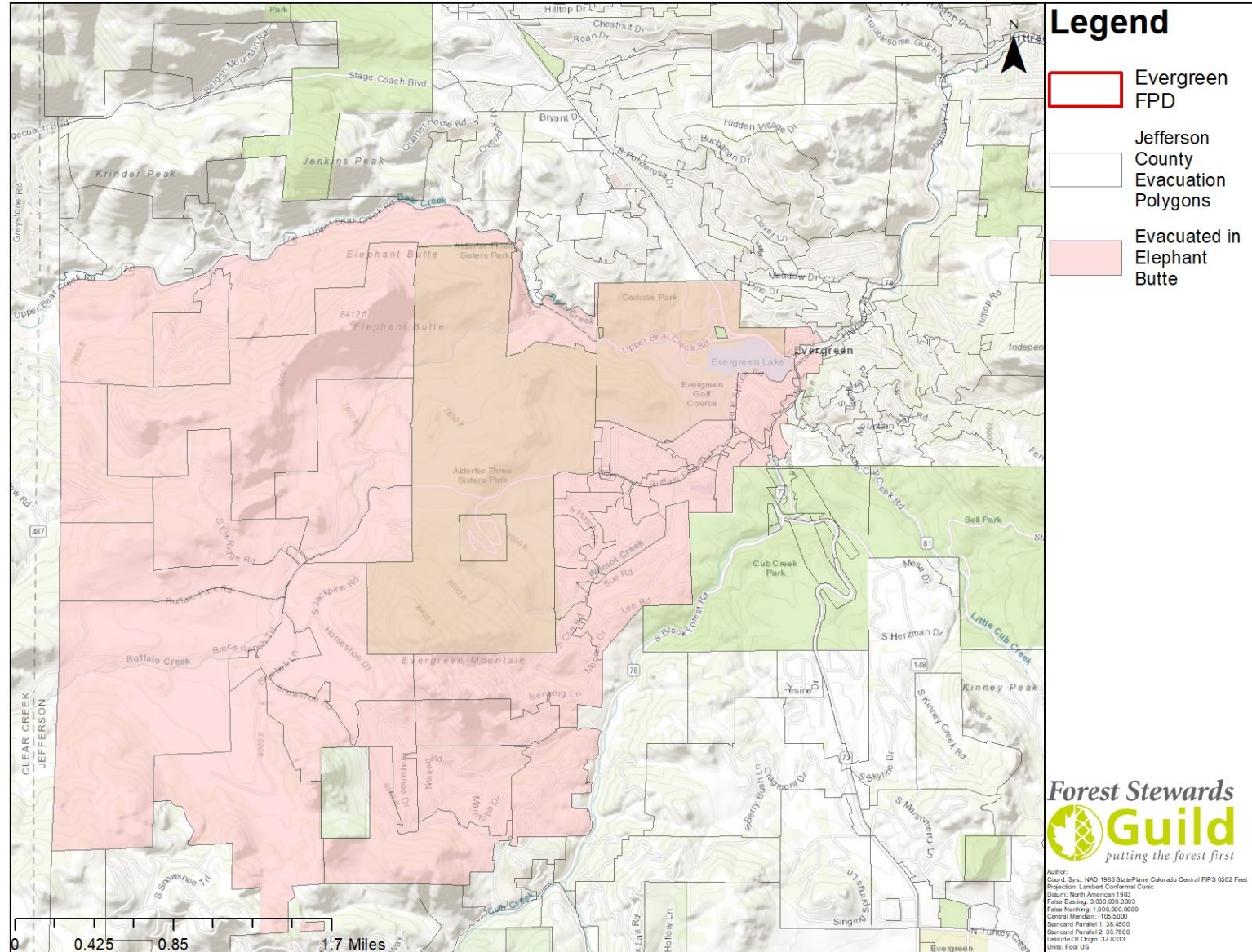




Evergreen CWPP Update

By The Forest Stewards Guild and Anchorpoint Group

Quick Update from Elephant Butte



Documents

foreststewardsguild.org/evergreen-cwpp/

- CWPP
- Plan Unit Appendices
- Maps
- WMI

Meeting Objectives



Discuss
CWPP findings



Mitigation and Home
Ignition Zone
Recommendations



Share
Local Resources

Web Map Interface

- Created by Anchorpoint Group
- Interactive data to accompany CWPP

Tutorial from Rod Moraga



Basic Terminology

Fuel

Spotting or Embercast

Radiant Heat

Flame Length

Red Flag Day/Warning

Fuel

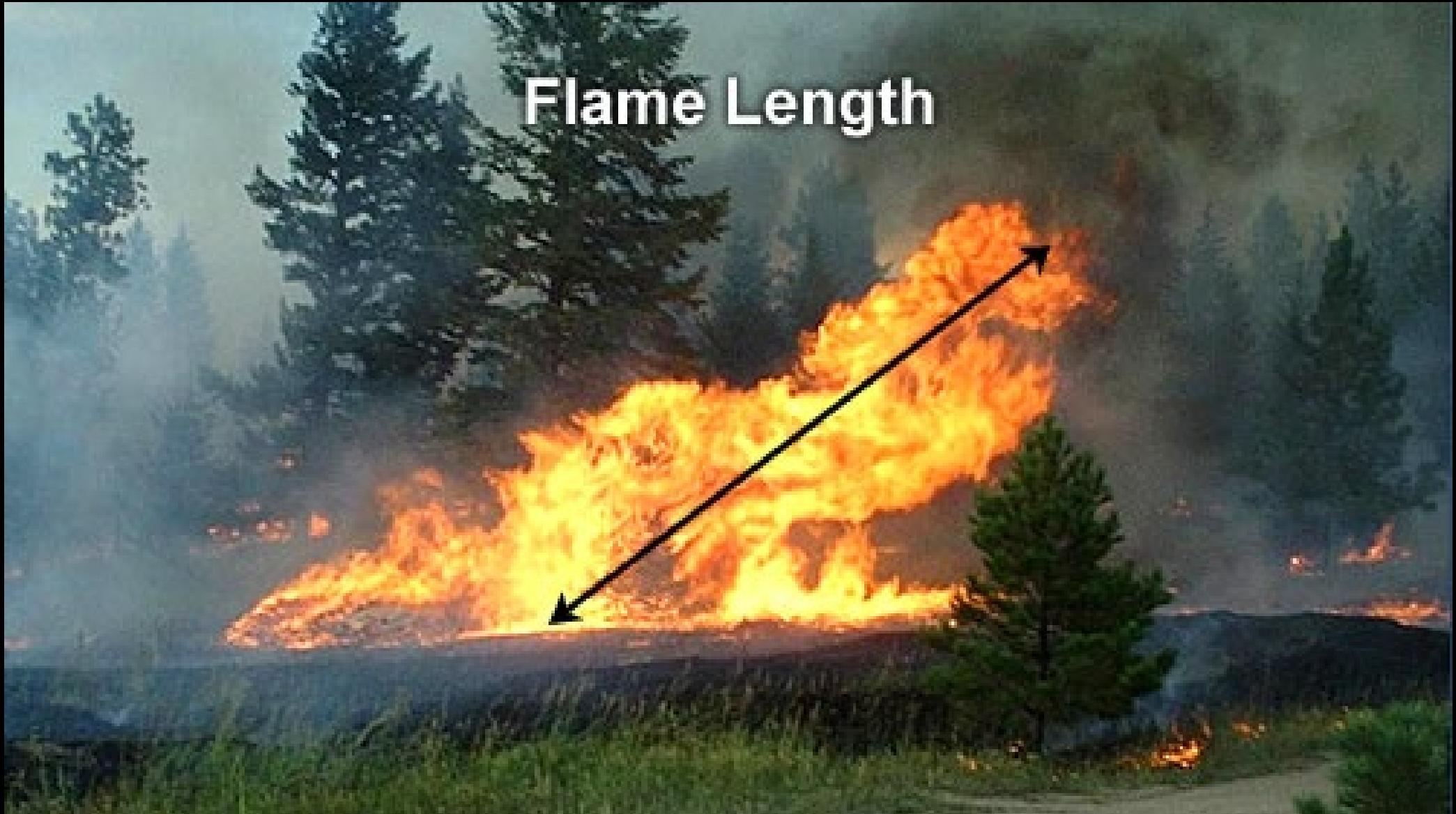


Live fuels, including vegetation, and dead fuels that is highly flammable



High fuel load indicates great fire intensity with long flame lengths

Flame Length



RADIANT
HEAT

30m



SHORT-RANGE
EMBERS

100m



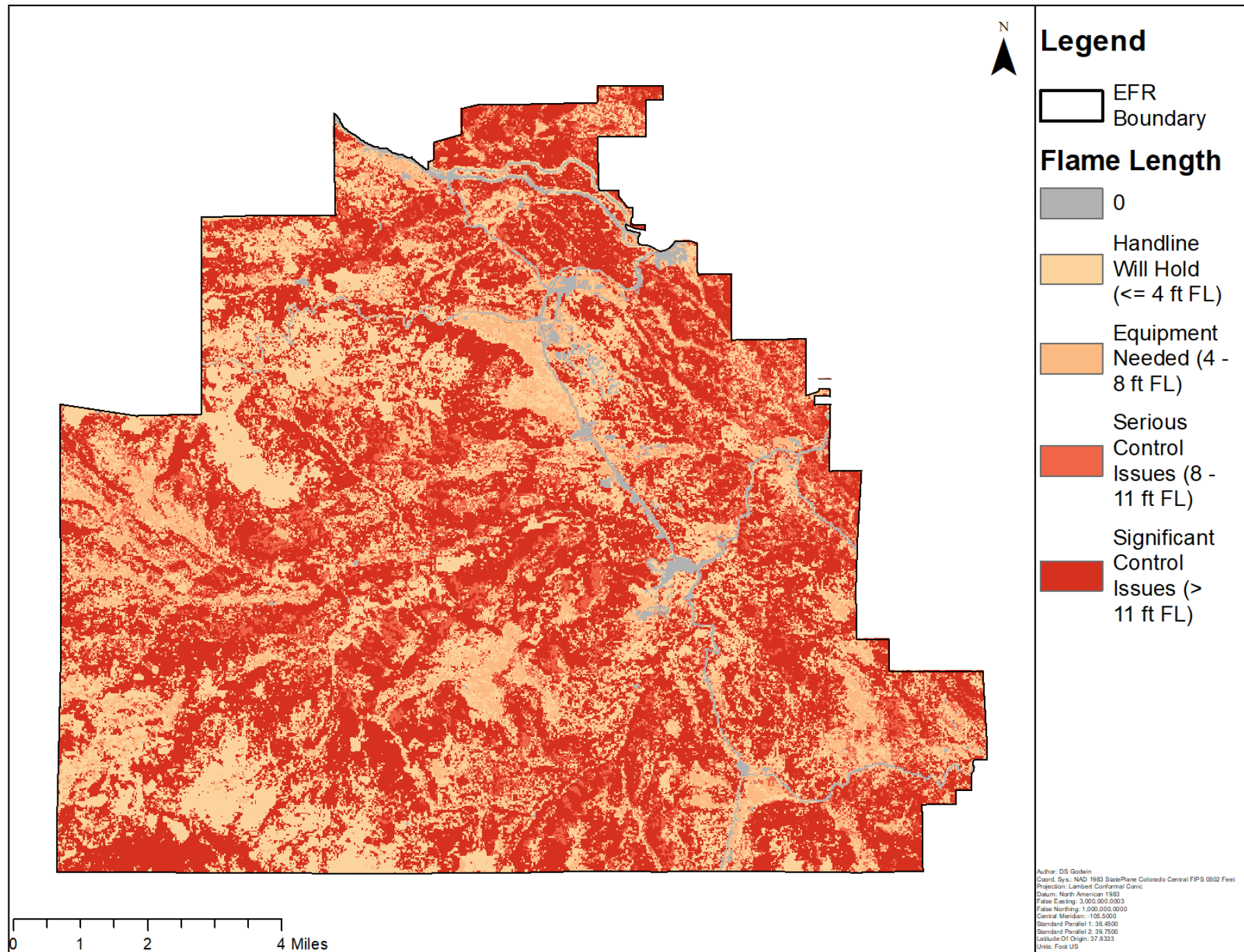
LONG-RANGE
EMBERS

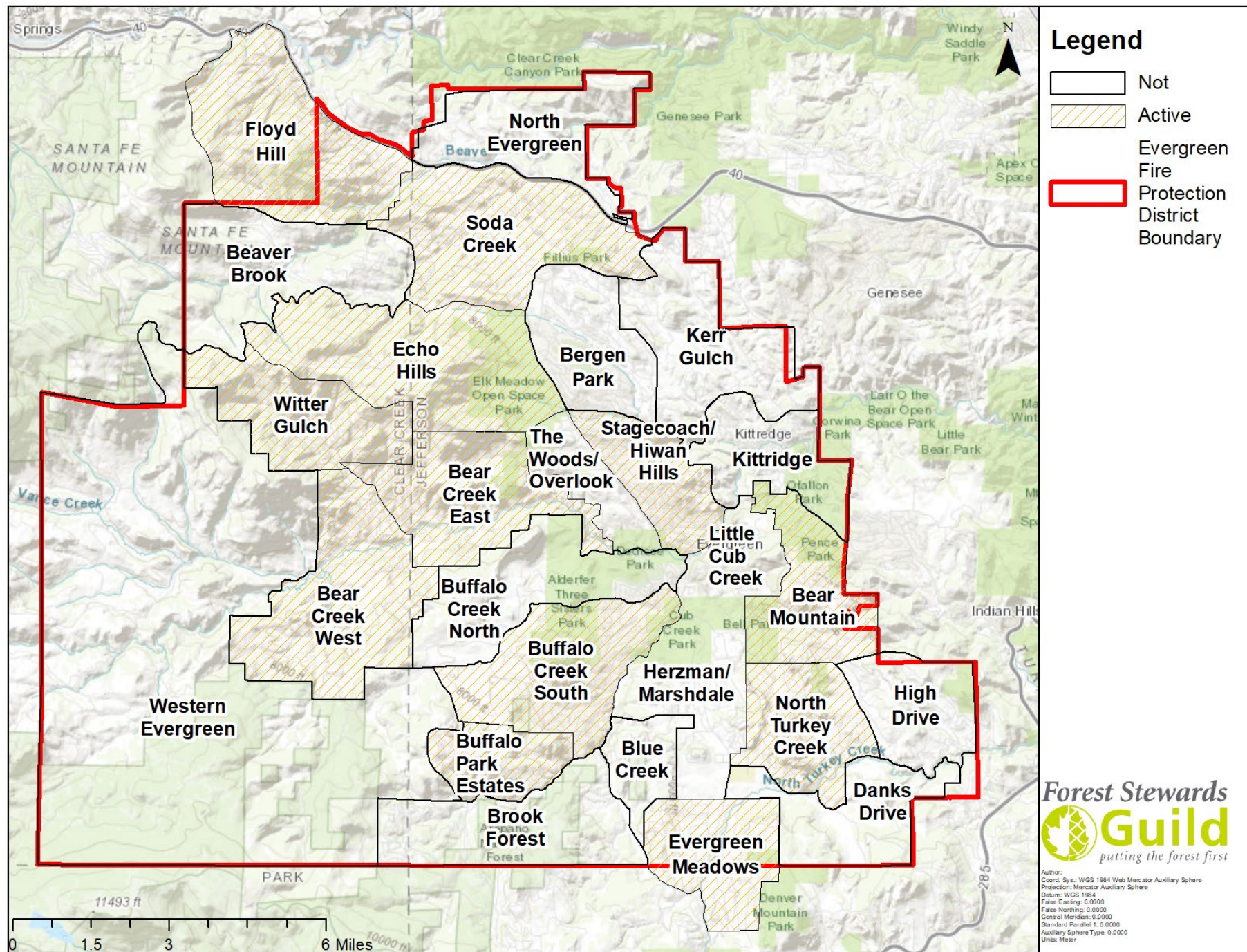
500m



National Weather Service – Denver/Boulder
Forecast Office
Red Flag Warning Criteria

Option 1	Option 2
RH less than or equal to 15%	Widely Scattered Dry Thunderstorms
Wind gusts greater than or equal to 25 mph	Dry Fuels
Dry Fuels	





Name	Final Risk Rating
Echo Hills	Extreme
Floyd Hill	Extreme
Beaver Brook	Extreme
Witter Gulch	Extreme
Danks Drive	Extreme
Little Cub Creek	Extreme
Brook Forest	Extreme
Buffalo Park Estates	Extreme
Kittridge	Very High
Bear Mountain	Very High
Herzman/Marshdale	Very High
Blue Creek	Very High
Buffalo Creek South	Very High
North Turkey Creek	High
Bear Creek West	High
Bear Creek East	High
Western Evergreen	High
North Evergreen	High
The Woods/Overlook	High
Stagecoach/Hiwan Hills	High
High Drive	High
Evergreen Meadows	Moderate
Soda Creek	Moderate
Kerr Gulch	Moderate
Buffalo Creek North	Moderate
Bergen Park	Low

Plan Unit: Evergreen Meadows



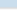


Legend

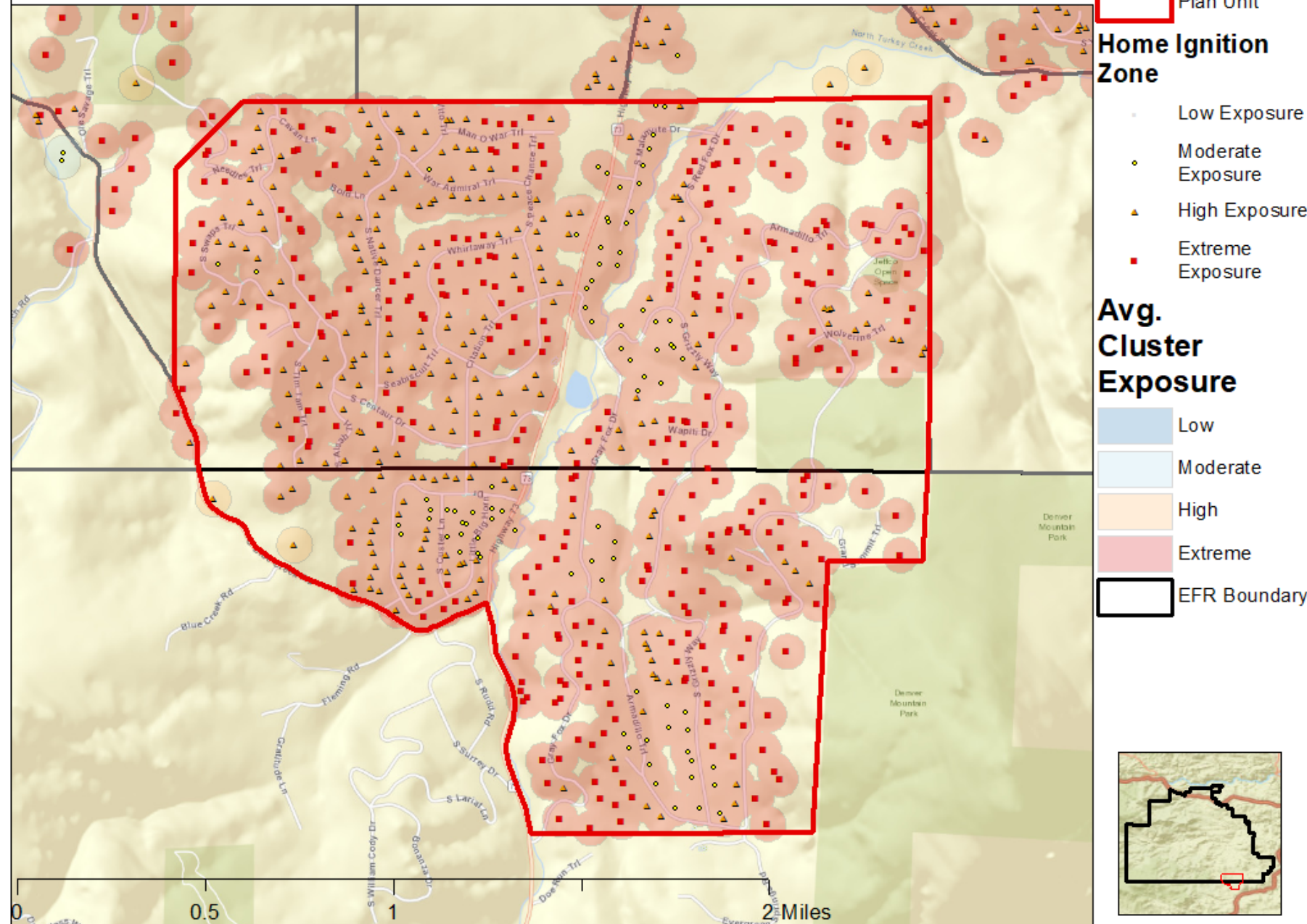
Plan Unit

Home Ignition Zone

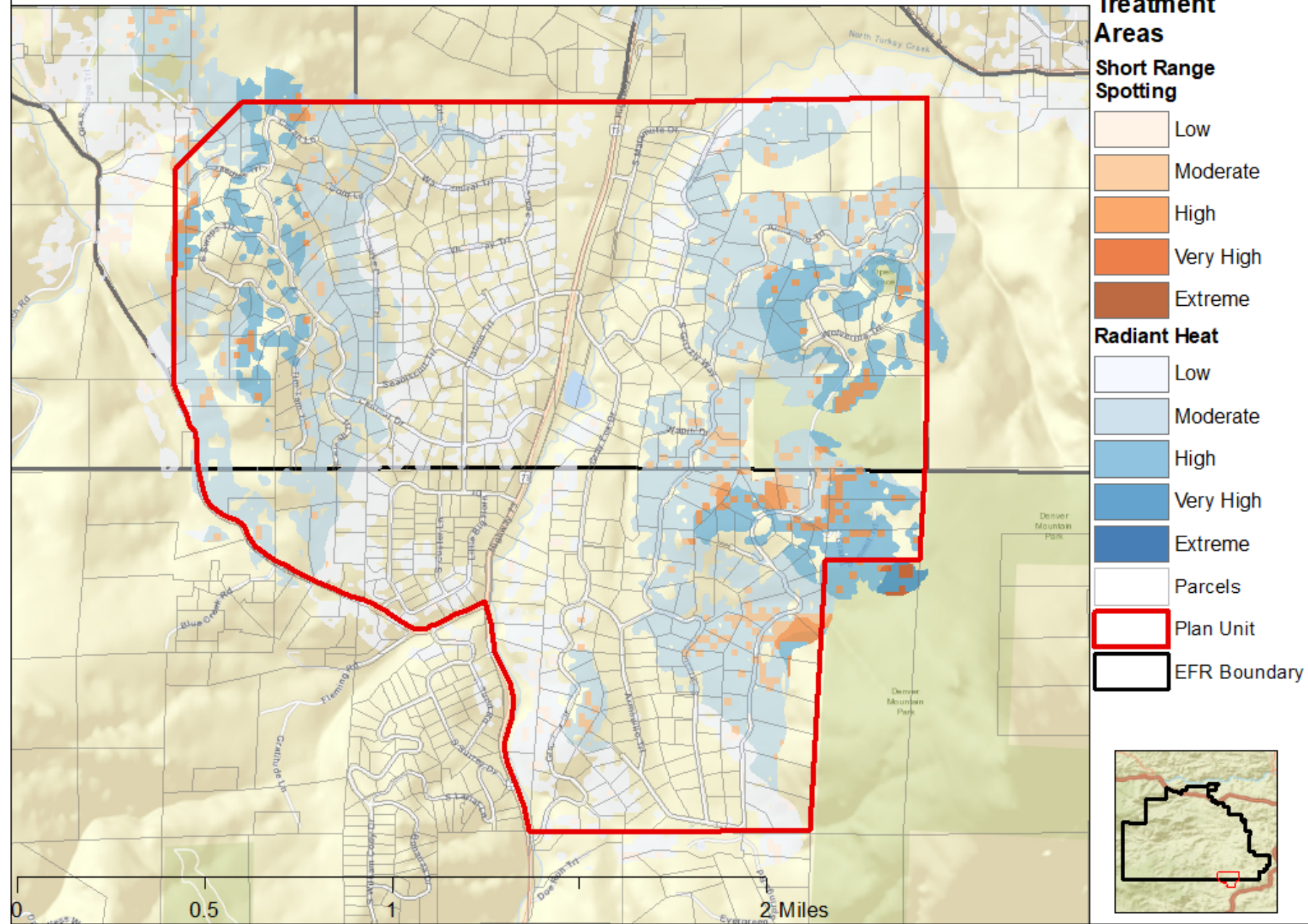
- Low Exposure
- Moderate Exposure
- High Exposure
- Extreme Exposure

Cluster	Avg. Cluster Exposure	Cluster Size	Cluster Type
1	1.5	10	Small
2	2.0	15	Medium
3	2.5	20	Medium
4	3.0	25	Medium
5	3.5	30	Medium
6	4.0	35	Medium
7	4.5	40	Medium
8	5.0	45	Medium
9	5.5	50	Medium
10	6.0	55	Medium
11	6.5	60	Medium
12	7.0	65	Medium
13	7.5	70	Medium
14	8.0	75	Medium
15	8.5	80	Medium
16	9.0	85	Medium
17	9.5	90	Medium
18	10.0	95	Medium
19	10.5	100	Medium
20	11.0	105	Medium
21	11.5	110	Medium
22	12.0	115	Medium
23	12.5	120	Medium
24	13.0	125	Medium
25	13.5	130	Medium
26	14.0	135	Medium
27	14.5	140	Medium
28	15.0	145	Medium
29	15.5	150	Medium
30	16.0	155	Medium
31	16.5	160	Medium
32	17.0	165	Medium
33	17.5	170	Medium
34	18.0	175	Medium
35	18.5	180	Medium
36	19.0	185	Medium
37	19.5	190	Medium
38	20.0	195	Medium
39	20.5	200	Medium
40	21.0	205	Medium
41	21.5	210	Medium
42	22.0	215	Medium
43	22.5	220	Medium
44	23.0	225	Medium
45	23.5	230	Medium
46	24.0	235	Medium
47	24.5	240	Medium
48	25.0	245	Medium
49	25.5	250	Medium
50	26.0	255	Medium
51	26.5	260	Medium
52	27.0	265	Medium
53	27.5	270	Medium
54	28.0	275	Medium
55	28.5	280	Medium
56	29.0	285	Medium
57	29.5	290	Medium
58	30.0	295	Medium
59	30.5	300	Medium
60	31.0	305	Medium
61	31.5	310	Medium
62	32.0	315	Medium
63	32.5	320	Medium
64	33.0	325	Medium
65	33.5	330	Medium
66	34.0	335	Medium
67	34.5	340	Medium
68	35.0	345	Medium
69	35.5	350	Medium
70	36.0	355	Medium
71	36.5	360	Medium
72	37.0	365	Medium
73	37.5	370	Medium
74	38.0	375	Medium
75	38.5	380	Medium
76	39.0	385	Medium
77	39.5	390	Medium
78	40.0	395	Medium
79	40.5	400	Medium
80	41.0	405	Medium
81	41.5	410	Medium
82	42.0	415	Medium
83	42.5	420	Medium
84	43.0	425	Medium
85	43.5	430	Medium
86	44.0	435	Medium
87	44.5	440	Medium
88	45.0	445	Medium
89	45.5	450	Medium
90	46.0	455	Medium
91	46.5	460	Medium
92	47.0	465	Medium
93	47.5	470	Medium
94	48.0	475	Medium
95	48.5	480	Medium
96	49.0	485	Medium
97	49.5	490	Medium
98	50.0	495	Medium
99	50.5	500	Medium
100	51.0	5	

-  Low
 Moderate
 High
 Extreme
 EFR Boundary



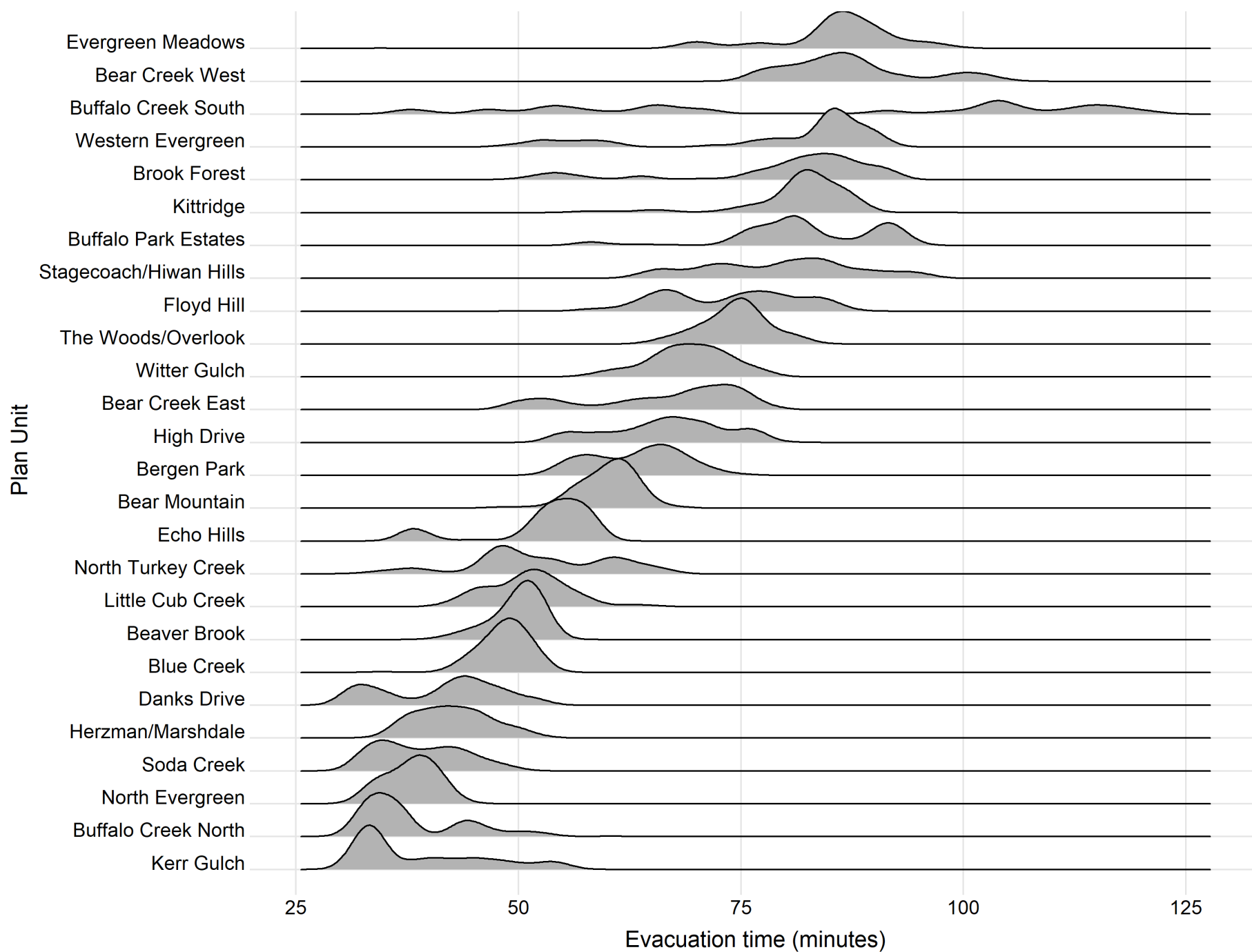
Plan Unit: Evergreen Meadows



Evacuation

Based on







- Roadway Capacity and Speed
- 2 cars leaving per structure
- High Visibility
- No Reckless Driving
- No unrelated traffic congestion

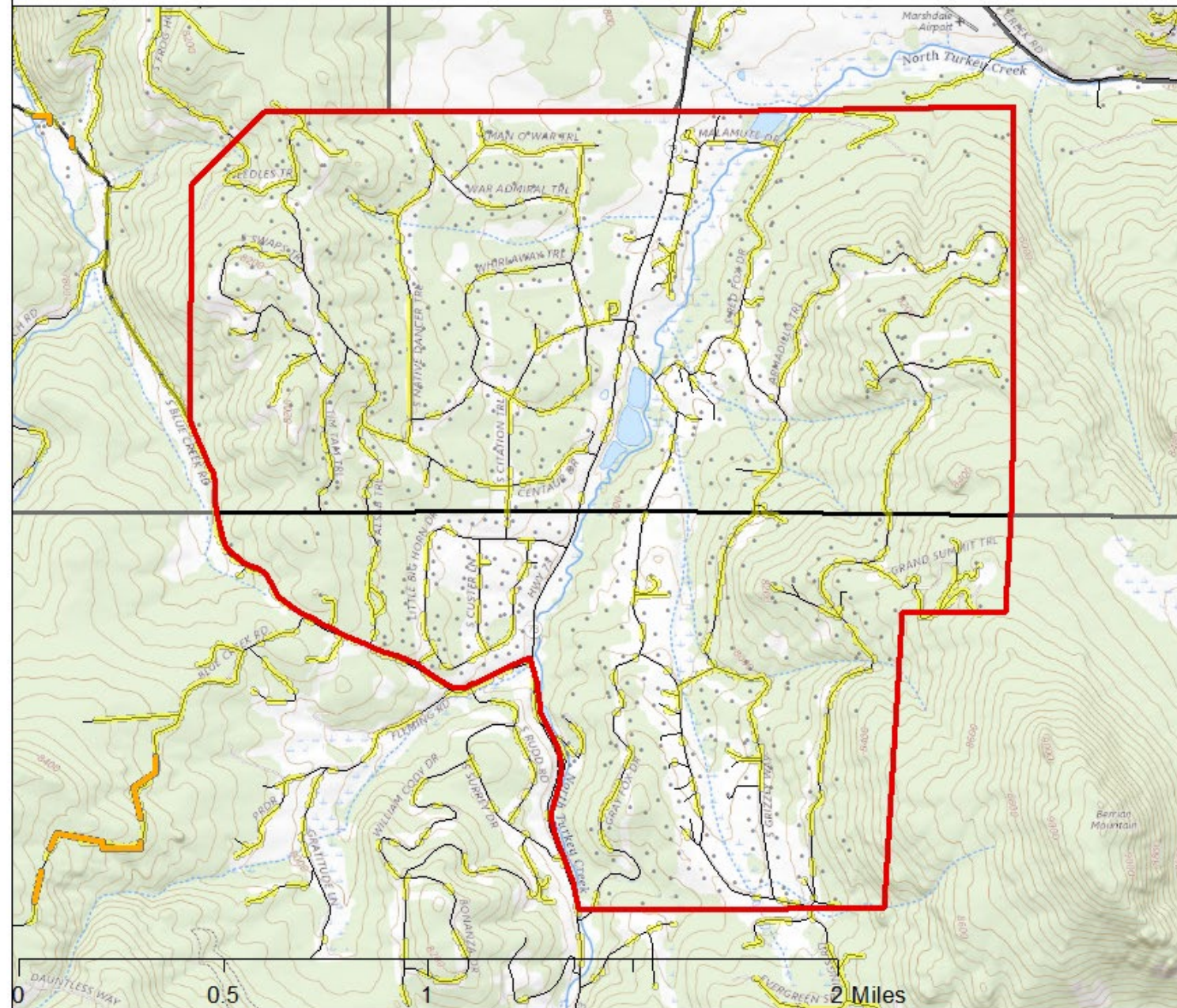


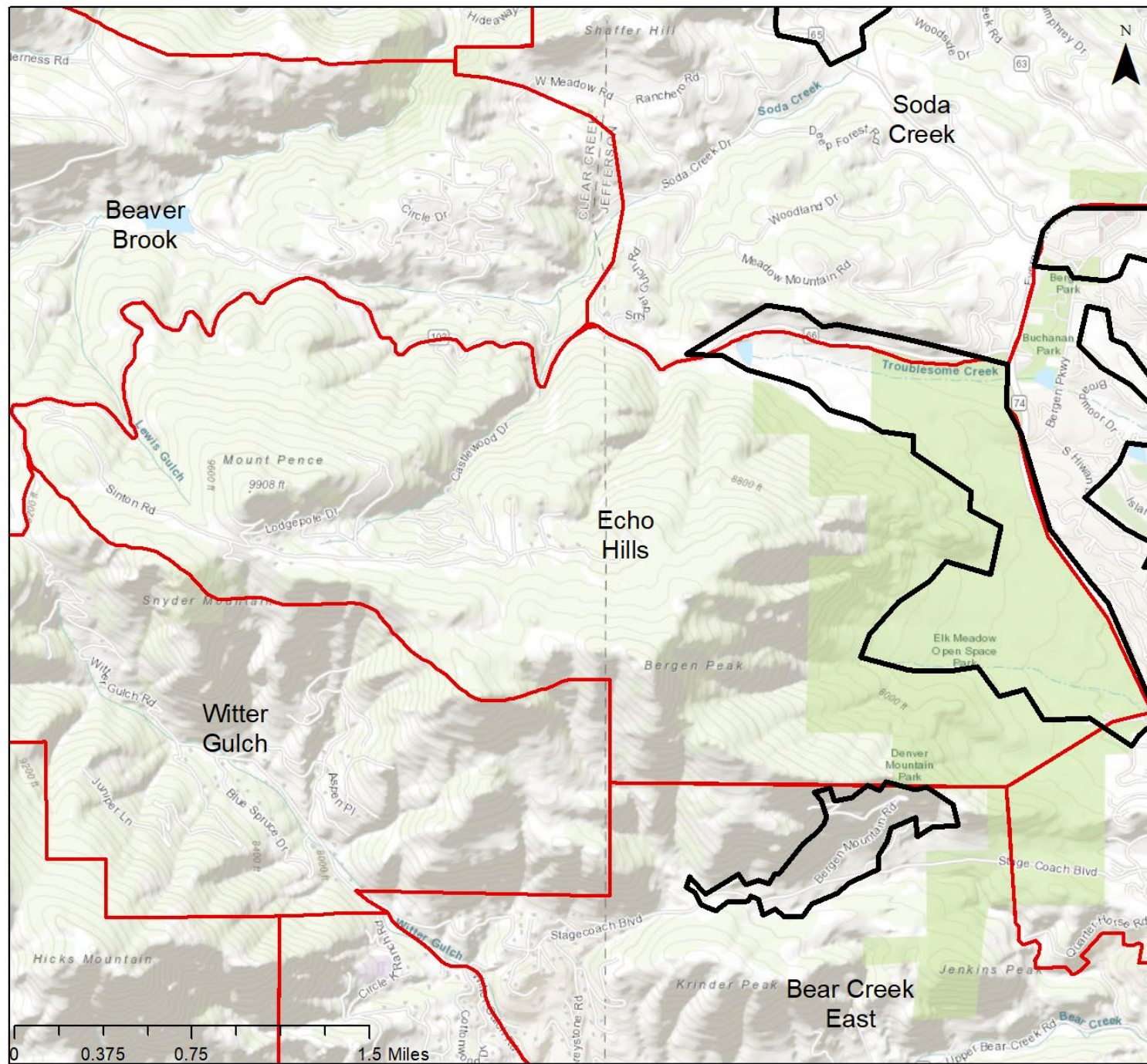
Note: 163 homes in The Woods/Overlook had evacuation times >200 minutes.

Plan Unit: Evergreen Meadows



Legend

-  Plan Unit
-  Structures
-  Evac. Pinch Points
-  Not Survivable Roads (90th% Weather)
-  Roads
-  EFR Boundary





Legend

-  Shelter-in-Place
-  Plan Unit Boundary

Forest Stewards Guild
putting the forest first

Author:
Coord. Sys.: NAD 1983 UTM Zone 13N
Projection: Transverse Mercator
Datum: North American 1983
False Easting: 500,000.0000
False Northing: 0.0000
Central Meridian: -105.0000
Scale Factor: 0.9996
Latitude Of Origin: 0.0000
Units: Meter

What to do about it!

Mitigation and Home Ignition Zone Recommendations

Defensible Space

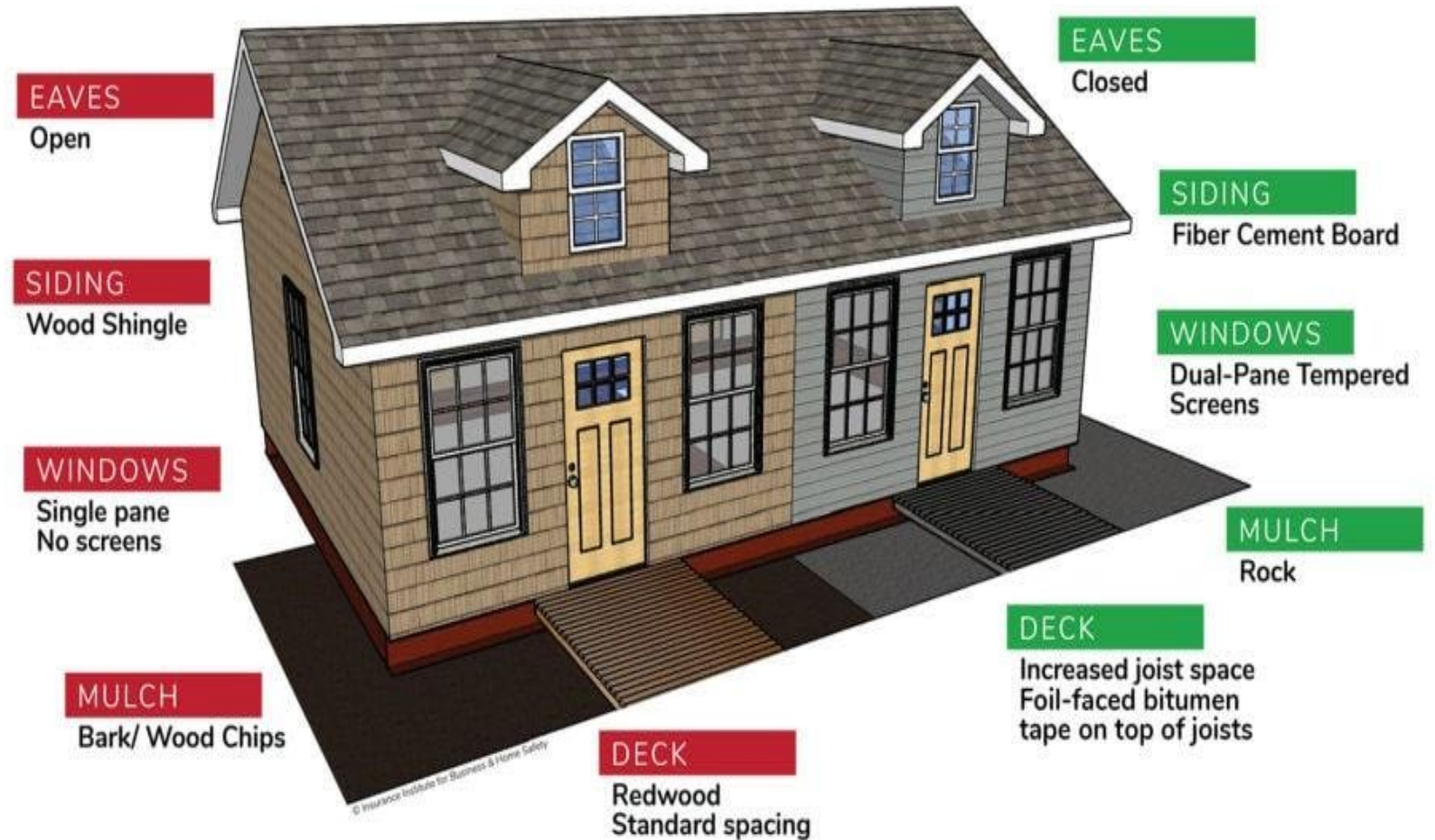
Vegetation, debris and other flammable materials have been treated, cleared or reduced to slow the spread of fire

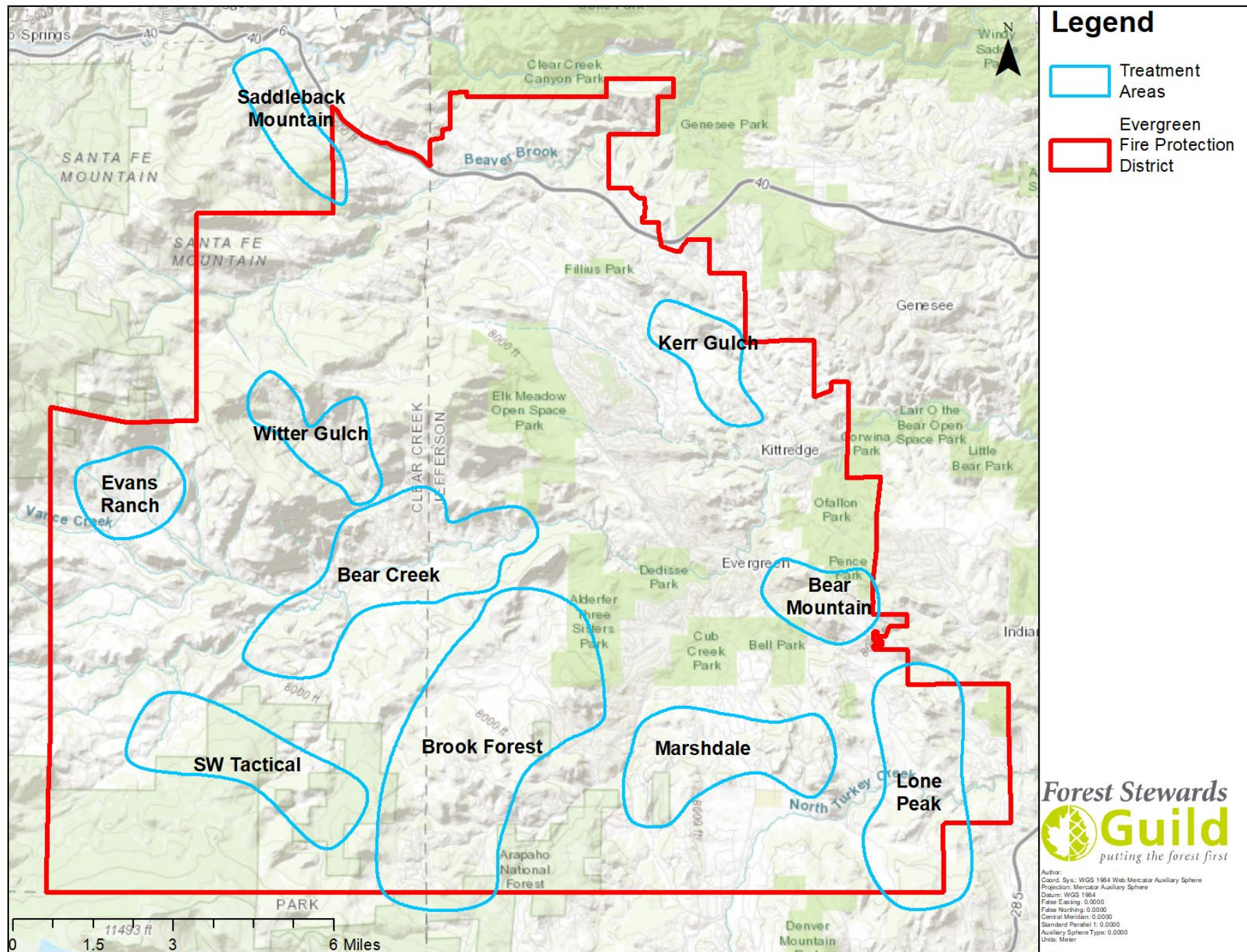


Home Hardening

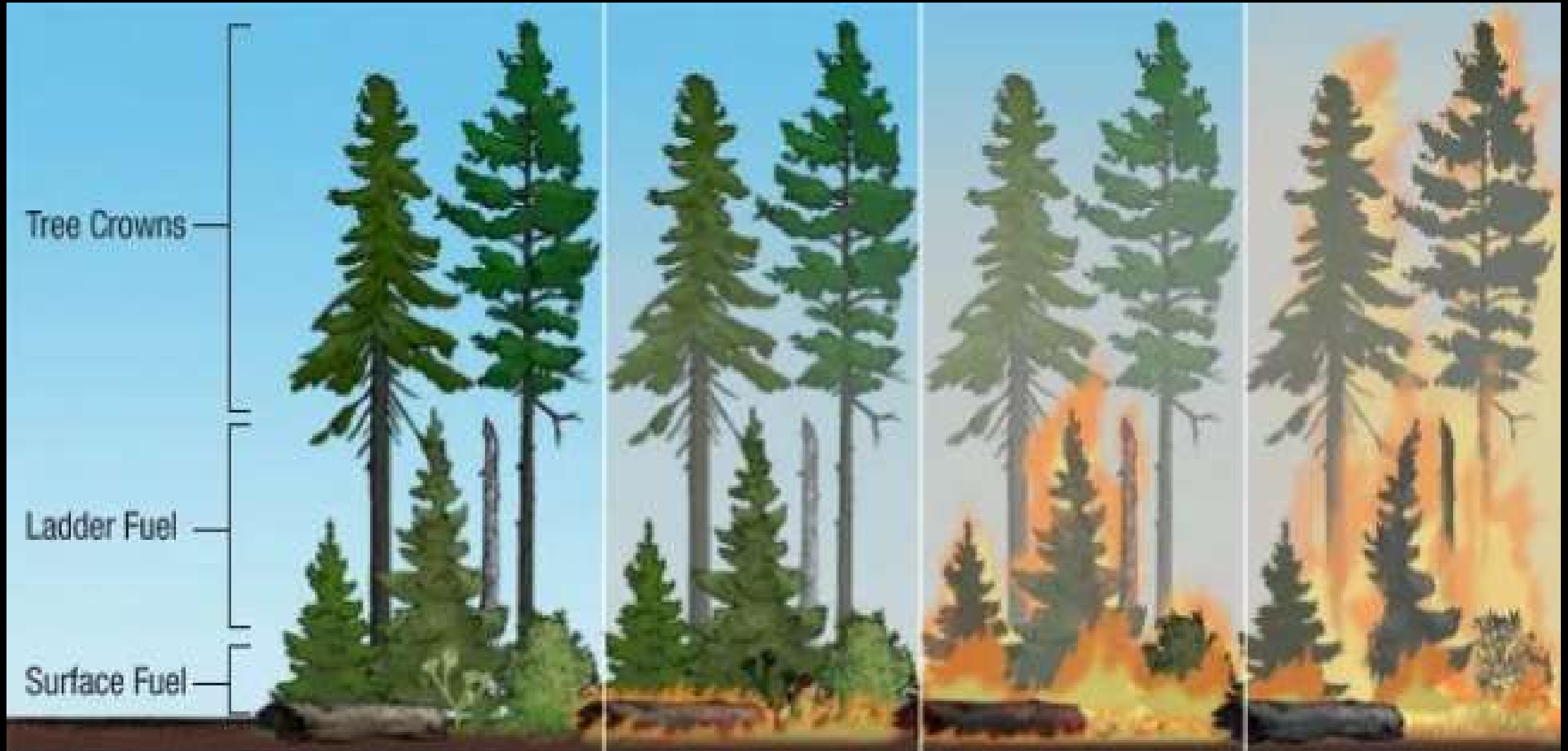
Method to reduce the likelihood of structure ignition with wildfire resistant features

Wildfire-Resistance: Make the “RIGHT” Choices





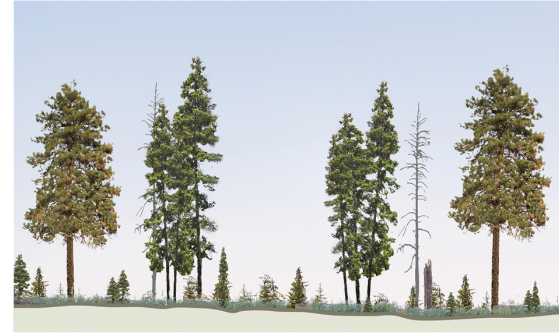
Fuel Treatment



Fire-suppressed Forest



Ecologically managed Forest



Ready, Set, Go!

Wildland fire preparedness in partnership
with your local fire department



Powered by
the IAFC



Ready – Be ready.

Talk to **local fire department personnel** about preparing your home for wildland fire threat.

Work to prepare your property by creating **defensible** space.

- ☑ Clean up or relocate combustible material from around your home
- ☑ Keep grass mowed short
- ☑ Trim trees and bushes, to allowing ample space between your home and landscape vegetation

Set – Be alert.

Prepare: a **'go kit'** and include items such as

- ☑ Prescription medication
- ☑ Emergency supplies
- ☑ Important documents

Create your own **action plan**

- ☑ Plan and practice multiple exit routes from your home and neighborhood
- ☑ Assign a meeting place in case you are separated
- ☑ Make sure you're familiar with your local emergency notification and evacuation systems

Go! – Act early!

- ☑ **Remain alert** and keep yourself informed of the situation.
- ☑ Get your **'go kit'** and leave well before the impending threat reaches your community or neighborhood following a planned, accessible route.
- ☑ Cooperate with local authorities during evacuation and re-entry processes.

Code Red

- Two Stage Warning: Prepare, Evacuate
- Red Flag Warning = Prepare!
- Avoid evacuation congestion with early notification

Resources

Educational materials to technical assistance

CSFS

- Education
- Grants
- Tax Return Subtraction
- Technical Assistance on larger properties



JCD



- Technical Assistance
- Forestry Project Management Assistance
- Education and Outreach

Evergreen Fire Rescue

- Connection to Resource needed
- Growing Wildland Fire Module
- Advice and Technical Assistance
- Evacuation Planning Support

Local Rotary Resource houses local information in coordination with EFR:
<https://www.rotarywildfireready.com/>



Questions