



[To view ATL online click here](#)

A note from the Director

It is a testament to our community's resilience and strength, that even during a pandemic the Guild's membership season has started off with a bang. A big 'thank you' to all the members who have already renewed (if you missed the email you can [renew online](#) or email membership@forestguild.org).

Even during this pandemic there is a lot going on for Guild members and for the forest. [Our list of webinars](#) by the Guild and partners is extensive! Too much for any one person to take in live, so we've also created a [new webinar library](#) to catch recordings of webinars you missed. We are disseminating information about [wildfire resilience](#), celebrating our 25th anniversary with the [spring issue of the Forest Steward](#), and creating [stronger connections with student members](#) of the Guild. Read about our [ongoing CWPP work](#), how we are [re-creating collaboration](#), a new book on Ecological Forestry authored by Guild members, job opportunities and much more.



For me, the Guild and our community is a bright star during a difficult time. Thank you for helping us maintain our guiding light.

A handwritten signature in cursive script, appearing to read "Zander".

NEWS FROM THE FOREST

"Half-Earth:" Reflections from graduate student Eric Hagen

"Half-Earth:" A wake up call, and the amount of land that needs to be dedicated to nature in order to save the majority of species on Earth from extinction. But how do we do it? And how do we both inspire and empower people to act effectively? I argue that we do it through nurturing relationships with the natural world, and simultaneously equipping people with the tools of modern conservation science. For my master's work, I partnered with the Vermont Alliance for Half-Earth to create web-based articles. These feature conservation tools and concepts embedded into stories about local people and their relationships to the natural world. I wanted to capture the emotional



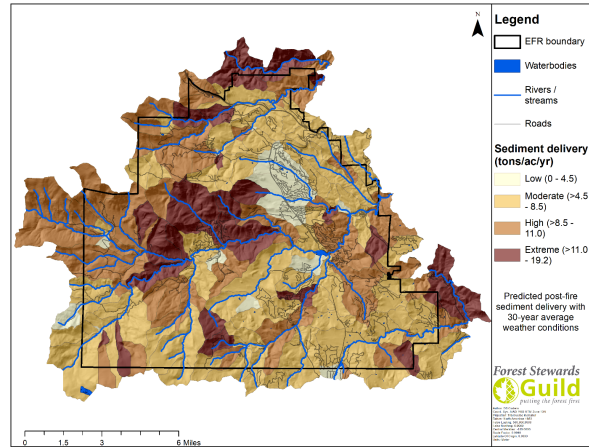
connection to the land that many of us feel but don't always talk about, and tie in concepts like restoration silviculture and large landscape conservation design.

[Read More](#)

Advancing the Practice of CWPPs - Risk Modeling

Written by Corrina Marshall.

The Forest Stewards Guild has worked with many communities in New Mexico and Colorado to produce Community Wildfire Protection Plans, a program that began in 2003, authorized and defined in Title I of the Healthy Forests Restoration Act (HFRA) passed by Congress. For this installment of ATL, we share about our improvements to wildfire risk analysis. This is done by spatial analysis and wildfire behavior modeling based on vegetation data – that part is not new. What we have added to the CWPP process are products like evacuation modeling, post-fire erosion modeling, radiant heat & short- and long-range spotting potential, and treatment suitability analysis. A few examples below show the outputs from these models, a clear indication of where high priority treatments exist.



[Read More](#)

Re-creating Collaboration

Written by Leonora Pepper and Zander Evans.

The pandemic is forcing many of us to rethink how we work, particularly around collaboration. The Guild is meeting the challenge, at a time when collaboration is essential on all fronts. We have increased online learning opportunities, such as our webinar on Communicating with Landowners about Oak Resiliency. We're sharing resources from partners such as [Sustainable Northwest's Resources and Best Practices for Adjusting to Remote Collaboration](#). The Guild's Sam Berry and Gabe Kohler interviewed Jon Boe to get a more in-depth view over how Covid-19 will affect the fire season and Mike Lynch helped lead a [webinar that looked at the 2019 Fire Season and the outlook for 2020 in the Southwest](#), which includes a discussion of fire management in the time of Covid-19.



[Read More](#)

Celebrating our first 25 years...

Check out our most recent [Founder's Essay](#) by Robert Hrubes on our [25th anniversary webpage](#). Remember to email membership@forestguild.org to submit thoughts, quotes, photos, and more to feature on this page and celebrate this milestone of our community and organization.

Upcoming Events

Want Forest Stewards Guild members to know about an event? Have a 2019 Guild Gathering site, webinar, or project idea? Let us know! Email colleen@forestguild.org. Also, check out our **new webinar library** of recorded webinars you may have missed!

Now thru Aug 1	Online Materials	Northeast Silviculture Institute for Foresters available online – 40% off for Guild members!
May 15	Webinar	Maine Mountain Collaborative: Confronting Changing Winters in the Northeast
Postponed	TBD	Foresters for the Birds training
May 18	Webinar	Wildlife Habitat Management at the Catamount Community Forest, Vermont
May 19	Webinar	Wildlife Forestry in Bottomland Hardwood Forests
May 20	Webinar	Seeing the Forest: Sustainable Wood Bioenergy in the Southeast US.
May 21	Webinar	Forest Birds. #6 in the Forest Adaptation Webinar Series
May 21	Webinar	Using the Wildfire Risk to Communities Website
May 26	Webinar	Ecological Forestry in Mountain Cove Forests of the Appalachian Region
May 27	Member call	Southeast Region Guild member call
May 27	Webinar	LANDFIRE Remap in the North Central United States
May 27	Webinar	Managing Fire for Water
May 28	Webinar	Woodland Owner Lunch and Learn – Managing Your Woodlands with Prescribed Fire
May 28	Webinar	Data, Science, and Methods behind the Wildfire Risk to Communities
June 3	Webinar	FCWG: Wood Utilization, Land Use and Global Outlook
June 17	Webinar	LANDFIRE Remap in the Southeastern United States
June 17	Webinar	State of Montane Conservation and Management in Maine
June 25	Webinar	Regeneration issues. #7 in the Forest Adaptation Webinar Series
August 7	Morgantown, WV	Mountain Cove Forest Management and Conservation in the Central Appalachians
August 20 - 22	Asheville, NC	Celebrating the roots of Guild forestry - 25th anniversary celebration!
October 6 - 10	Luxembourg	ProSilva 30th anniversary meeting in Luxembourg
October 26 - 27	Rangeley, ME	Symposium on Climate Change in Maine's Mountains
Rescheduled...TBD	Corvallis, OR	Save the date! 25th Anniversary Guild Gathering! More details soon.

Welcome New Members

Professional members

Ann Duff, Forester	Jacksonville Beach, FL
Rexx Janowiak, Green Timber Consulting Foresters	Pelkie, MI
Wendy Ledbetter, The Nature Conservancy	Lumberton, TX
Rachel Mickey, Washington Dept of Natural Resources	Bellevue, WA
Aaron Plaughner, WestRock	Alderson, WV

Affiliate members

Elizabeth Morse	Otis, ME
-----------------	----------

Student members

Hannah Briner, University of Alabama	Tuscaloosa, AL
Eric Hagen, University of Vermont	Burlington, VT
Lukas Kopacki, University of Vermont	Burlington, VT
Peter Larkin, University of Vermont	Larchmont, NY
Aidan Powell, Colorado College	South Burlington, VT

Stewards Circle Donors

Court Ballinger, Oregon State University	Corvallis, OR
Amanda Mahaffey, Forest Stewards Guild	Brunswick, ME

Thank you to all of our [Stewards Circle donors](#) for supporting the Guild's work!

Organizational Sponsors

Thank you to our [organizational sponsors](#)! Your support is essential to fulfilling our mission of putting the forest first.





How to help

You can help us more confidently plan for the future and meet our 25th Anniversary Challenges! Set up [auto-renew](#) on your membership or [monthly giving](#) when you donate (\$25 monthly puts you in the Stewards Circle, but no amount is too small). As always, you can also: become an [organizational sponsor](#) or join our [Stewards Circle](#) today! A [donation](#) at any level directly supports our forests. We welcome professional and affiliate [members](#) who advance the stewardship of forests across the landscape. If you currently have a gift membership, or are not a member, please [join](#) today! If you haven't renewed yet, please [renew now](#).

You can also support the Forest Stewards Guild by shopping on [Amazon Smile](#) for any holiday gifts you cannot buy locally. And, share our [GuideStar Profile](#) with anyone looking for an upstanding charity.

Notes

Check out our new webinar library webpage, where we will continue to collect recordings of completed webinars you may have missed! With everything on offer these days, you likely can't attend everything live!

The **Spring 2020, 25th Anniversary edition of the Forest Steward** is now online. Enjoy!

Ecological Silviculture Foundations and Applications is a new book by Guild members Brian J. Palik, Anthony W. D'Amato, and Jerry F. Franklin, along with Norman Johnson. Classical silviculture

has often emphasized timber models, fundamentally based in production agriculture. This book presents silvicultural methods based in natural forest models—models that emulate natural disturbances and development processes, sustain biological legacies, and allow time to take its course in shaping stands. Nice work everyone...this is so exciting!

NESAF Quarterly features awards for Amanda Mahaffey, Barrie Brusila, and other current and past Guild members! If you missed it in March, check out the [ATL highlight on Amanda and Barrie](#) during Women's History Month 2020.

Tick Survey: Researchers at the University of Georgia, Hollins University, Duke University, Clemson University and the University of Rhode Island are conducting a study ("Investigating COVID-19 impacts on the epidemiology of tick-borne diseases in people and pets") to determine whether COVID-19 restrictions have had an effect on the time spent outdoors by people or their pets and whether this change is associated with an increased risk of exposure to ticks or tick-borne diseases. Anyone 18 or older and a resident of the United States or Canada can [participate](#).

Have notes you'd like to share with fellow Guild members? Contact Colleen Robinson, membership@forestguild.org.

Publications and Research

Physiological responses of eastern hemlock to light, adelgid infestation, and biological control: Implications for hemlock restoration. Silvicultural treatments may improve long-term health and survival of infested hemlock trees and the integration of treatments with existing strategies deserves continued exploration.

Chinese tallow story map from Texas A&M Forest Service.

Deadly imports: In one U.S. forest, 25% of tree loss caused by foreign pests and disease.

Jobs

Be sure to check out the [job opportunities](#) in forest stewardship on the Forest Stewards Guild webpage. They include a [Special Projects Forester](#) and a [Fire Management Officer](#) in NM, [Forest Stewards Youth Corps Crew Members](#), a [Fire Adapted Communities Coordinator](#) and a [Forester](#) in NV, and more!

Forest Stewards Guild - http://foreststewardsguild.org - 505-983-8992 - membership@forestguild.org

This email was sent to colleen@forestguild.org. If you are having trouble viewing this email, you may [also](#) [view it online](#). To opt out of all communications, [click here](#).

[Forward email](#).

