

Cibola County Community Wildfire Protection Plan Agenda

1. Welcome & Introductions
 1. **Please return all hand outs to me!**
2. Review 2005 CWPP
3. Review timeline & CWPP update guidelines
4. Review draft template for update
5. Core Team List
6. Identify progress made since 2005 CWPP
7. Review Communities at Risk lists and map
8. Update priorities
9. How to Engage with the public?
10. Wrap up and next steps



2006 CWPP

CWPP update guidelines

Process

1. Review existing CWPP
2. Host collaborative meetings
3. Update maps
4. Reflect changes in risk ratings
5. Develop updated priorities
6. Distribute CWPP update drafts to key stakeholders
7. Submit the final document to local government body, local fire department, and state Forestry for signatures and endorsement
8. Submit signed and endorsed plan to NM State Forestry no later than 9/1/20

Plan Requirements

1. Collaboration
2. Prioritized fuel reduction
3. Recommendations to reduce structural ignitability
4. Signatures from:
 1. Applicable local government
 2. Local fire department
 3. NM State Forestry
5. Describe progress made and list accomplishments since last CWPP was adopted
6. Changes in community risk ratings (High, Medium, Low)
7. List of CARs and each hazard risk rating
8. Map of WUI with risk ratings
9. **List of new prioritized projects**

| September | October | November | December |
|---|---|---|---|
| Finalize Agreements | Gather Background Information Build Core Team list | 1 st Core Team Meeting: overview of CWPP update process, progress made since 2006, and to gather input from community members about priorities | Work on first draft of CWPP update GIS Analysis Outreach to Core Team |
| Conference Call with COG, County Staff and FSG | | Core Team Survey & Questions, Resident survey, publicize CWPP | Begin compiling accomplishments, updated priorities, and relevant changes since 2006 CWPP |
| January | February | March | April |
| Work on CWPP Draft | Work on CWPP Draft | Work on CWPP Draft | First draft submitted to core team for review |
| Public Meeting | Core Team meeting to review CWPP Progress | | |
| May | June | | |
| Final core team meeting to finalize CWPP update | Present CWPP to County Commission | | |
| Submit CWPP update for signatures | Submit signed CWPP update to NM State Forestry | | |
| Public meeting to review CWPP update draft. | | | |

Document

Executive Summary

Introduction

What is a Community Wildfire Protection Plan (CWPP)?

CWPP Updates

1| Geography

Land tenure

Vegetation

2| Accomplishments Since 2006 CWPP

3| Wildland Urban Interface

Communities at Risk

4| Priority actions

Fuels Treatments

Human Sources of Ignition

Volunteer Fire District Consolidation

CWPP implementation and action items

5| Fire Districts: Accomplishments since 2006 and Priority Actions for 2020

6| Companion plan crosswalk

Statewide Natural Resources Assessment

New Mexico State Hazard Mitigation Plan

Cibola County Plans?

7| Fire adapted communities and Firewise communities

8| Wildfire preparedness

Ingress and egress

Roads

Evacuation

Smoke impacts

Communication

Community Emergency Response Team

Defensible space

9| Planning for post-fire recovery

Safety

Flooding and Erosion

NM After Wildfire Guide

10| Collaboration

Core team

Community meetings

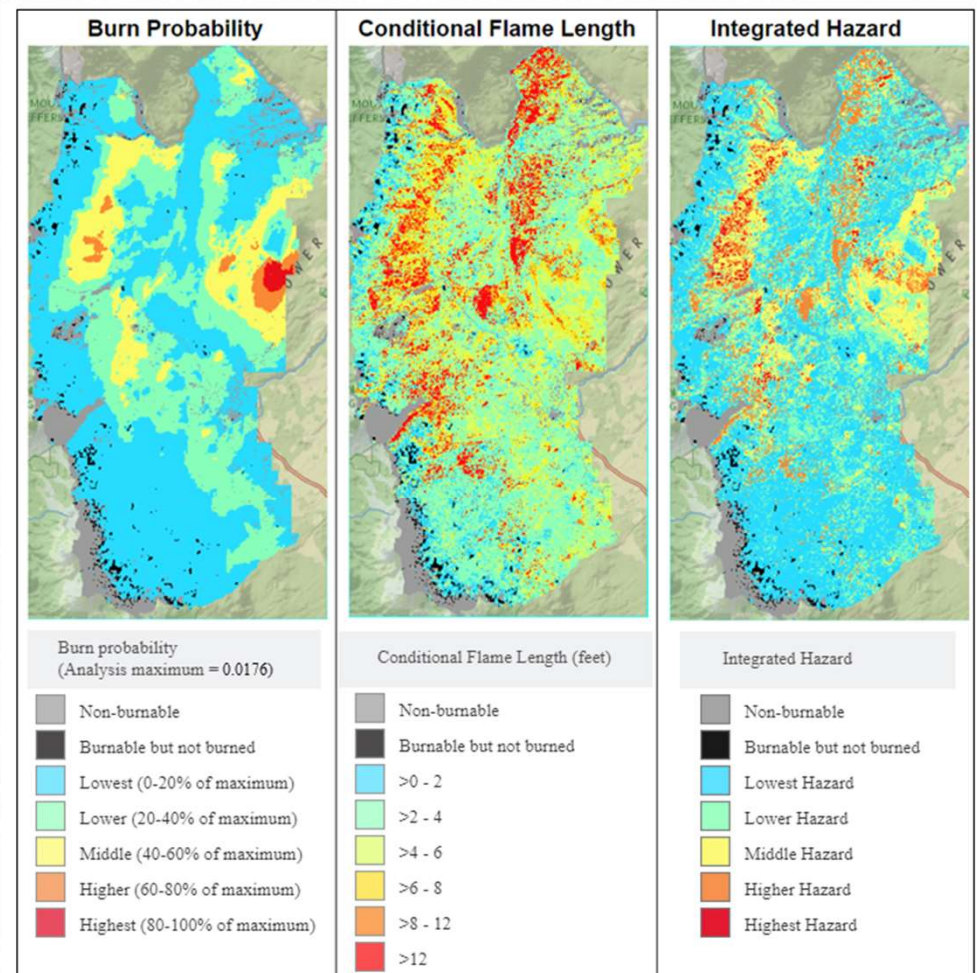
Community surveys

Themes from the Community

11| Geospatial Analysis and Map Descriptions

Potential Maps

1. Surface Ownership
2. Wildland Urban Interface
3. Communities at Risk
4. Fire Districts
5. Fuel Treatments
6. Wildfire Hazard Potential
7. Wildfire Risk
8. Wildfire History since 2000
9. Flame Length
10. Vegetation Cover
11. Vegetation Type
12. Post-Wildfire Debris Flow Hazard
13. Population Density
14. Poverty Level
15. Senior Citizens





Review Core Team List

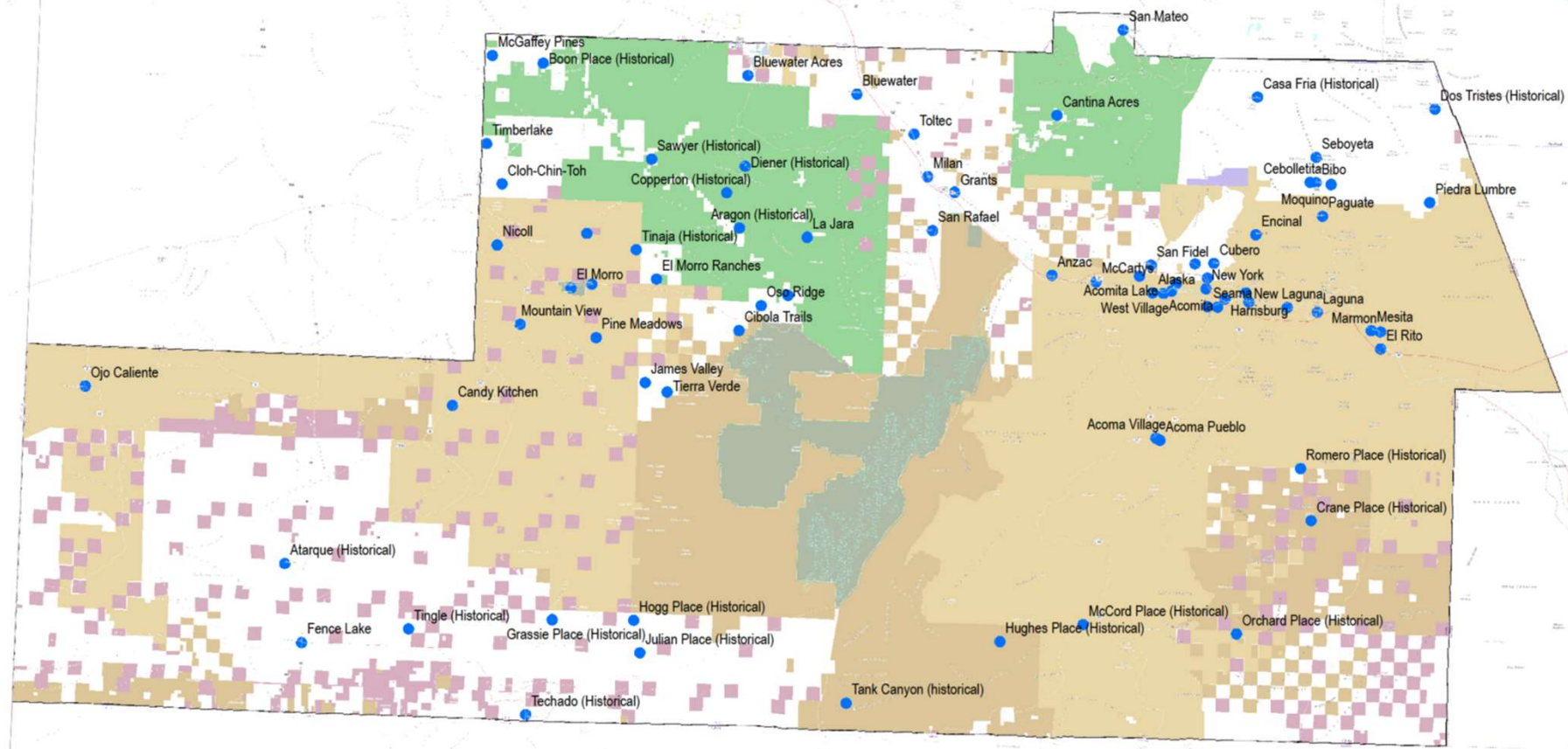
- Who else should we invite?

Community Hazard Ratings

- Create a list of Communities in the County
- Conforming to NM State Forestry CAR ratings (Low, Medium, High)
- Are there any communities missing?
- Consolidate communities?

2006 Ratings

| | Previous Rating | 2020 Rating |
|--------------------------------------|-----------------|-------------|
| Bluewater | Moderate | |
| Bluewater Acres | Moderate | |
| Candy Kitchen | Moderate | |
| Crestview/Twin Buttes/ Crested Butte | Moderate | |
| Lobo Canyon | Moderate | |
| Morrow | Low | |
| Milan | Low | |
| San Mateo | Low | |



- Cibola County
- Bureau of Land Management (BLM)
- Forest Service (USFS)
- National Park Service (NPS)
- Fish and Wildlife Service (FWS)
- American Indian Lands (BIA)
- State Fish and Wildlife
- State Parks and Recreation
- State Trust Land
- County Land \ Regional Agency Land

Cibola County CWPP

10
Miles



Priorities for 2018 and beyond

Use handouts to list priorities

2018 Priority action areas

1. Community involvement
2. Wildfire Preparedness
3. Improving fire district capacity
4. Fuels Reduction projects
5. Reducing structural ignitability
6. Roads and transportation
7. Adjacent lands

How to engage with the public?

- Online surveys
- Meetings
- Suggestions of how to connect?
- Social media, flyers, newspapers, radio?
- Other organizations?
- Events

Accomplishments since 2006?

Use handouts to list accomplishments since
2006

Next steps

1. Gather input from Core Team and Community
 1. Interviews
 2. Surveys
 3. Meetings
2. Refine List of Communities at Risk
3. Refine Fire Districts & Map
4. Create New Fire Risk Map
5. Schedule Community Meeting
6. Begin GIS analysis
7. Begin Drafting Document

The Network

MEMBER DIRECTORY

FACNM LEADERS

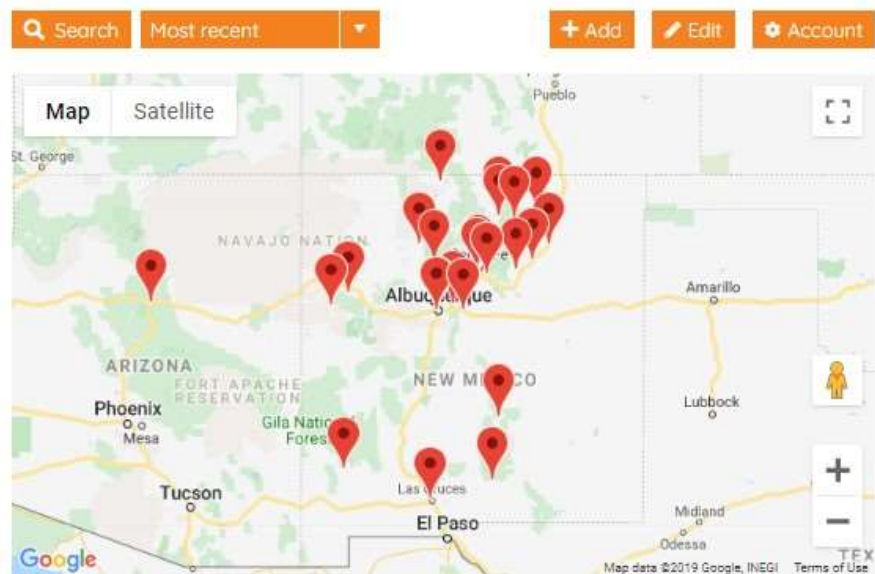
CONTACT US

FAC NM members are the Network.

By joining the network as a member, you will have access to the knowledge and resources of professionals and WUI residents from around the state. You can search the FAC NM member directory by location if you are looking for help where you live, or search for a professional who may have the specified knowledge to help you apply for a grant to create defensible space on your property.

Everyone starts as a FAC member. For those looking to take-on a leadership role within the Network, we have the **FAC Leader** program.

- **To Join the Directory click the ADD button. Create your account and fill in the information.**
- **Click the Connect button on someone's profile to contact that FACNM Member via email.**





Contact

Sam Berry

sam@forestguild.org

541 816 6371

Gabe Kohler

gabe@forestguild.org